



IMPORTANT Always refer to OEM repair procedures for proper repair guidelines. Never subject Tesla Model Y to pulling forces.

Holding System
User Manual
IN20958
REV. – 8.10.22
CO11925.3

CHIEF'S LIMITED ONE-YEAR WARRANTY & LIABILITY

Chief Collision Technologies warrants for one year from the date of installation and/or purchase any of its products which do not perform satisfactorily due to defect caused by faulty material or workmanship. Chief's obligation under this warranty is limited to the repair or replacement of products which are defective and which have not been misused, carelessly handled, or defaced by repairs made or attempted by others.

CHIEF COLLISION TECHNOLOGIES DOES NOT ASSUME RESPONSIBILITY FOR ANY DEATH, INJURY OR PROPERTY DAMAGE RESULTING FROM THE OPERATOR'S NEGLIGENCE OR MISUSE OF THIS PRODUCT OR ITS ATTACHMENTS. CHIEF MAKES NO WRITTEN, EXPRESS OR IMPLIED WARRANTY WHATSOEVER OF MERCHANTABILITY OR FITNESS FOR A PARTICULAR PURPOSE OR OTHERWISE REGARDING THE EQUIPMENT OR ANY PART OF THE PRODUCT OTHER THAN THE LIMITED ONE-YEAR WARRANTY STATED ABOVE.

This users manual is designed to assist operators with the safe and efficient use of the Chief Model Y Universal Holding System. When used with Chief Electronic Measuring, the parts holding system provides operators with the ability to accurately and securely hold replacement parts during vehicle repair.

IMPORTANT:

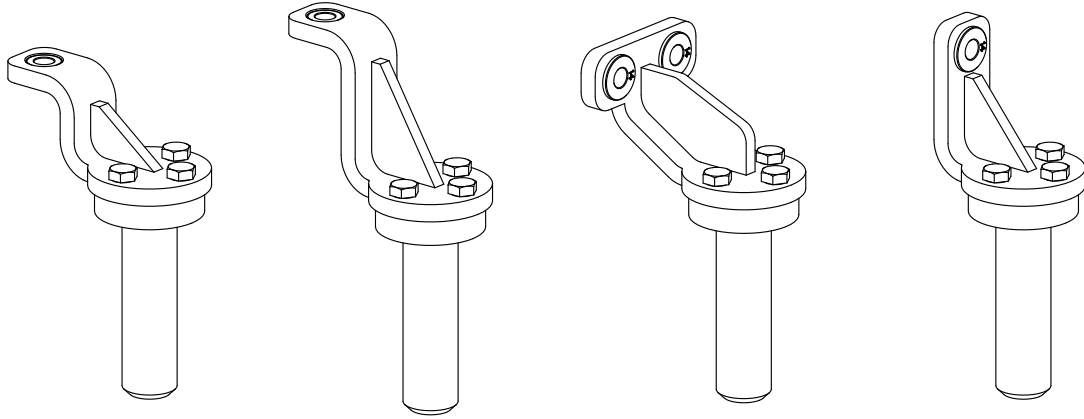
This manual only identifies basic usage procedures for the Model Y Universal Holding System, it must be used with the Chief Structural Holding System. The usage of the system is limited only by the imagination of the technician doing the work.

The Chief Model Y Universal Holding System is designed for the holding and positioning replacement parts. It is not designed as a replacement for Chief Anchoring. **IMPORTANT** The Model Y Universal Holding System must not be subjected to pulling forces. The Chief Universal Stands provided will serve as the primary vehicle holding.

Because Chief Model Y Universal Holding System works with Chief electronic measuring, special attention should be given to the replacement of the Universal Holding stands during setup. Best results will be achieved with the stands located on the perimeter of the vehicle being repaired to prevent shading of measuring targets.

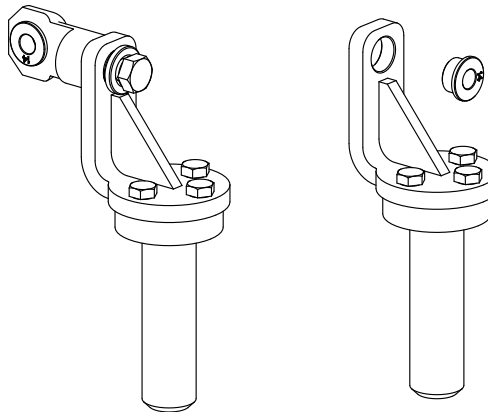
PLANNING AND SETUP

The Holding System is a universal system that will adapt to any Chief style systems with rectangular holes in the deck. The Fixtures are designed to be bolted to any existing threaded bolt or any location there is a threaded nut, flange or boxed rail on a vehicle. This could be used with suspension (components) that are installed or removed and are designed with an offset to also be used with Chiefs computerized measuring system. The system includes short vertical fixtures and tall vertical fixtures that will accommodate most bolts or threaded holes from 6mm to 25mm with the use of bushings. The large and tall horizontal fixtures are designed for any bolts or bolt hole ranging from 6mm to 25mm with the use of bushings that is facing forward, inward, outward or rearward.

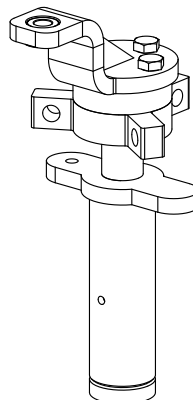


Additional attachments will allow for connection of the fixture to the structure in several different methods. The angle adapter allows for the location of the fixture to be used if the location is at an angle.

Note: All bushings are designed to allow for the correct sizing of the hole for the bolt to be used to allowing for centering of the Fixture and should be placed on the opposite side of the fixture away from the structure.



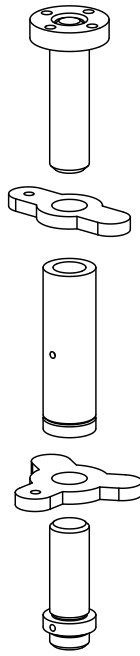
A heavy three-ear rigging nut can be placed directly below the foundation adapter. This will serve as a cable tie off when additional stability is needed.



Directly below the foundation adapter is the turnbuckle adjustment mechanism. The foundation adapter threaded stud screws into the top of the turnbuckle center section while the Structural Holding lower adapter screws into the bottom. A two-ear wing nut is threaded on to the foundation adapter to lock the top half of the turnbuckle once correct vertical position is achieved. A three-ear wing nut is threaded on the lower adapter to lock that half of the turnbuckle.

Note: The long threaded portion of the Structural Holding lower adapter utilizes a left hand thread, which is compatible with the bottom of the turnbuckle center section (marked with a v-groove around the outside of the part) and the three-ear wing nut.

Turnbuckle Assembly

	<ol style="list-style-type: none">1. Completely thread two-ear wing nut onto foundation adapter threaded stud.2. Thread non-grooved end of turnbuckle center section completely onto foundation adapter threaded stud.3. Completely thread three-ear wing nut onto Parts Holding lower adapter.4. Completely thread Structural Holding lower adapter three-ear wing nut assembly into grooved end of the turnbuckle center section.
--	--

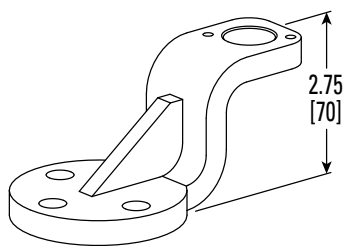
The short threaded side of the Structural Holding lower adapter is a standard right hand thread that is compatible with the Structural Holding stand base and extension tubes.

Note: It is not necessary to completely disassemble the turnbuckle section when changing setups or reconfiguring the stand. The fully assembled turnbuckle section can be unscrewed from the rest of the stand system using the included spanner wrenches.

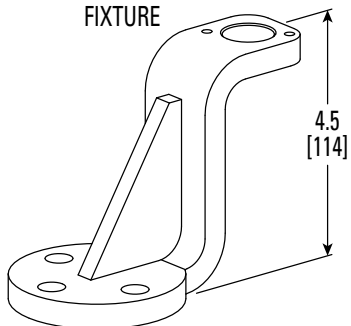
Note: For best results, always have foundation adapter and the lower Structural Holding adapter threaded into the turnbuckle center section equal amounts before starting up.

Vertical positioning of the Model Y Universal Holding System, when used in conjunction with the Structural Holding System, uses a turnbuckle style adjustment over a 4.5" (115mm) range. Additional height can be achieved by using the extension tubes and extension adapters included with the system. Compare the approximate height required to the table below to determine how to configure the extension tubes and adapters.

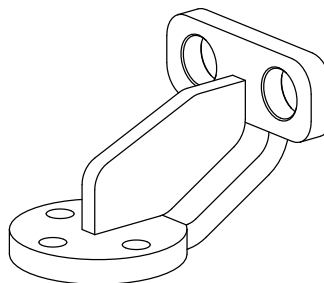
502000
SHORT VERTICAL FIXTURE
(FOR EXTENDED REACH USE CK110123)



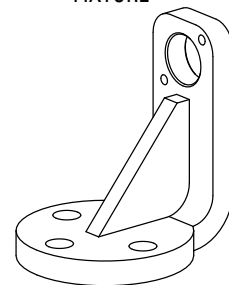
502008
TALL VERTICAL
FIXTURE



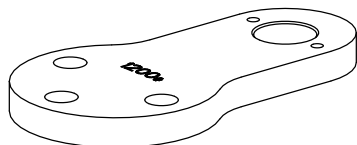
502005
LARGE HORIZONTAL
FIXTURE



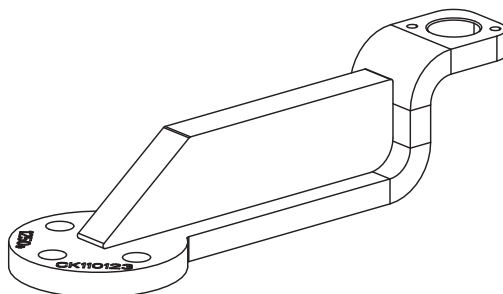
502019
TALL HORIZONTAL
FIXTURE



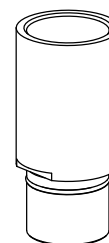
502074
FLAT FIXTURE



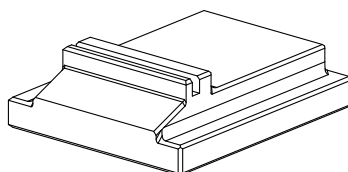
CK110123
EXTENDED REACH
VERTICAL FIXTURE



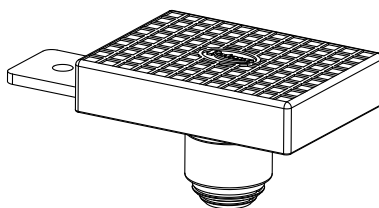
FJ6171-1
90mm EXTENSION



CK130224
PINCH WELD SUPPORT



CK110124
ADAPTER WITH
LEVER ADJUSTMENT



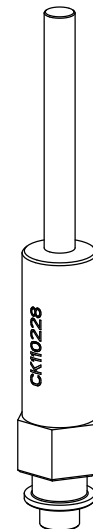
CK110257
STANDOFF
104 M12 X 35 Lg.



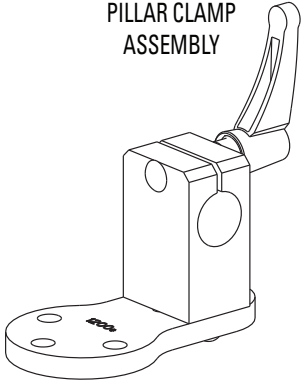
CK110230
STANDOFF
104 M12 X 85 Lg.



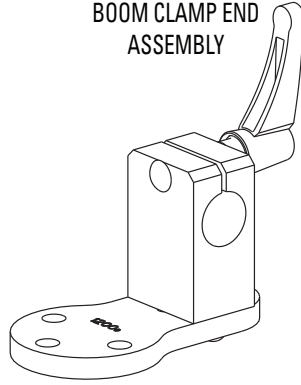
CK110228
STANDOFF
104 M14 X 115 Lg.



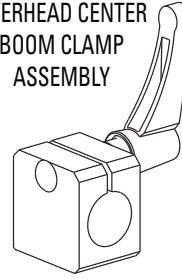
502143
PILLAR CLAMP
ASSEMBLY



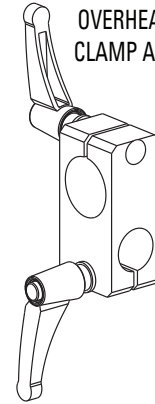
CK110231
BOOM CLAMP END
ASSEMBLY



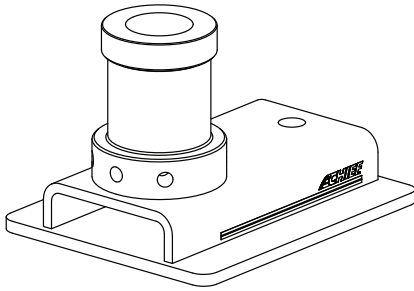
CK110244
OVERHEAD CENTER
BOOM CLAMP
ASSEMBLY



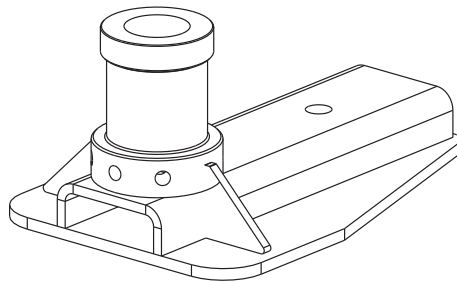
638068
OVERHEAD BOOM
CLAMP ASSEMBLY



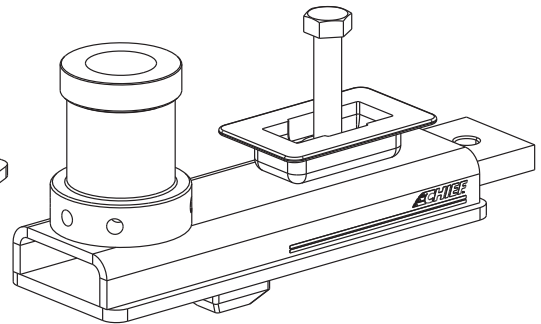
499118
FLAT BASE



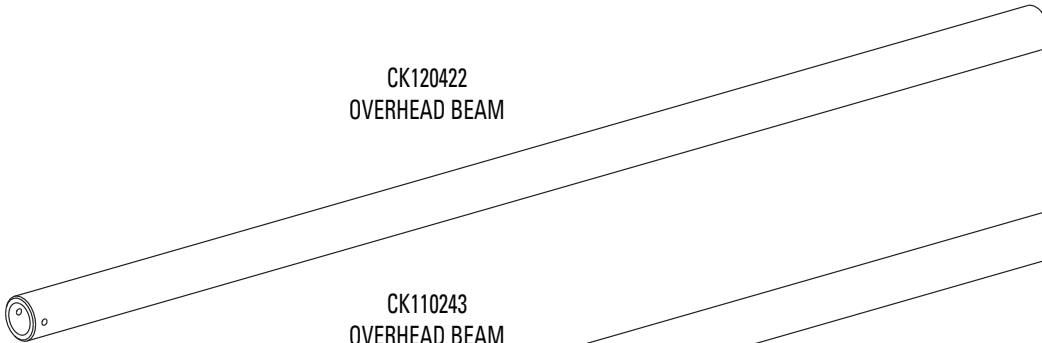
502047
STRUCTURAL HOLDING
BASE



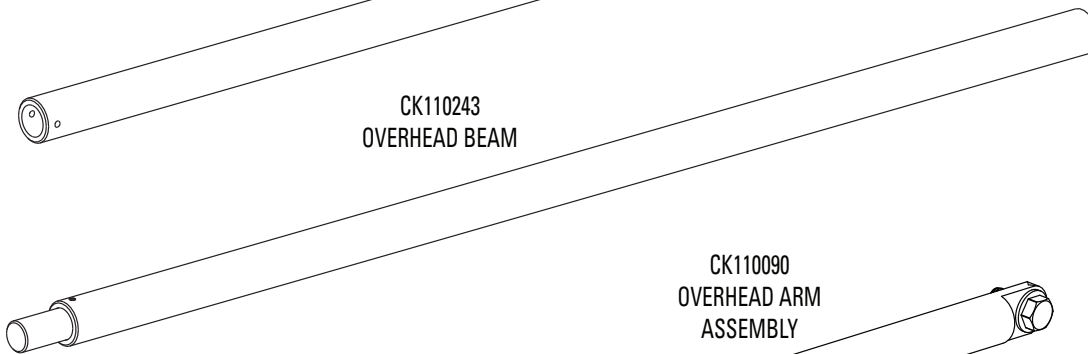
502128
NARROW STRUCTURAL
HOLDING BASE ASSY



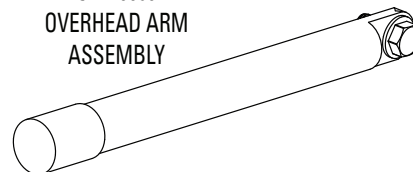
CK120422
OVERHEAD BEAM



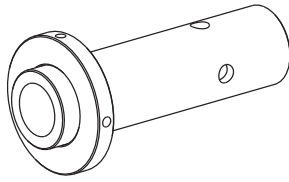
CK110243
OVERHEAD BEAM



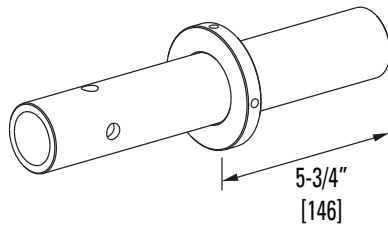
CK110090
OVERHEAD ARM
ASSEMBLY



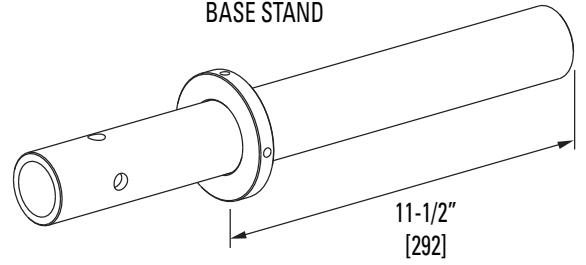
502055
SHORT TUBE
BASE STAND



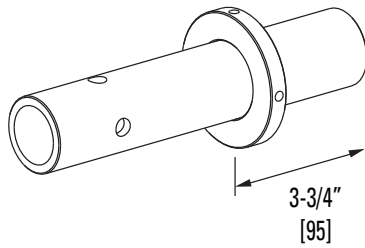
502063
TALL TUBE
BASE STAND



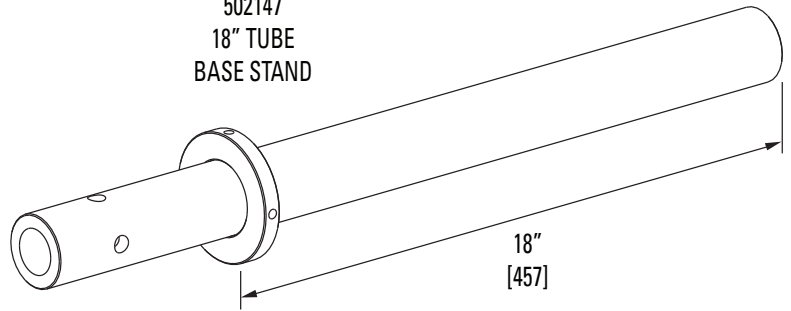
502075
11-1/2" TUBE
BASE STAND



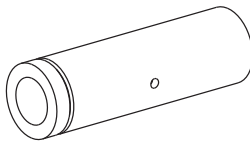
502082
3-3/4" TUBE
BASE STAND



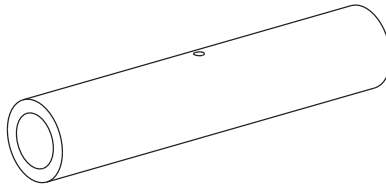
502147
18" TUBE
BASE STAND



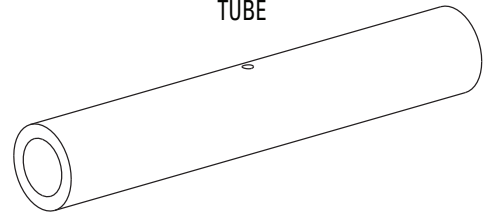
502034
TURN BUCKLE
CENTER TUBE



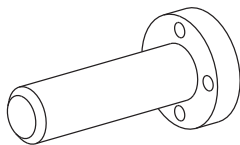
502061
10" EXTENSION
TUBE



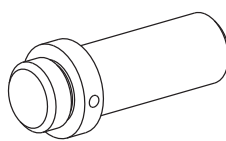
502017
12" EXTENSION
TUBE



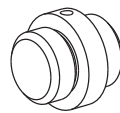
502039
ADAPTER HEIGHT
SCREW



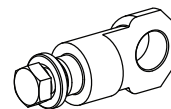
502033
LOWER ADAPTER
SCREW



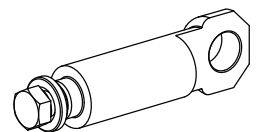
502032
ADAPTER
EXTENSION



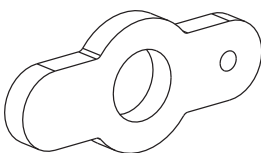
502026
ANGLE ADAPTER
CLAMP



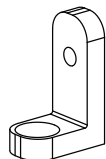
CK110282
LONG ANGLE ADAPTER
CLAMP



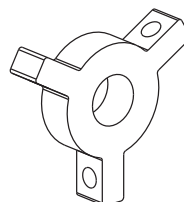
502015
RIGHT HAND
WING NUT



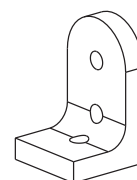
CK120491
WRIST BLOCK



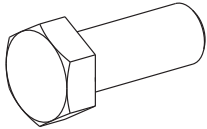
502038
RIGGING NUT



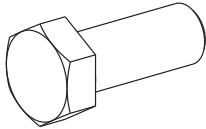
638073
WRIST BLOCK



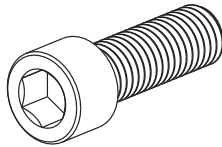
010625
1/2"-13 x 1-1/4" HHCS



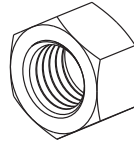
41684
M12-1.75 x 30 HHCS



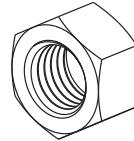
502078
M12-1.75 x 35 SHCS



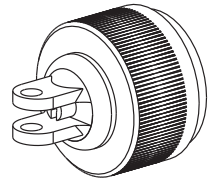
41579
1/2"-13 HEX NUT



41589
M10 x 1.5 HEX NUT

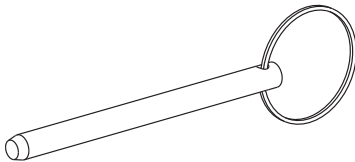


791996
MAGNETIC HOLE
ATTACHMENT 8mm

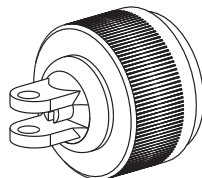


USE W/ M10 SHCS

502058
RELEASE PIN

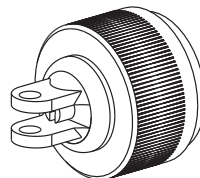


780102
MAGNETIC BOLT
ATTACHMENT 14mm



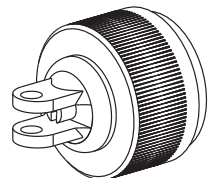
USE W/ M10 SHCS

780104
MAGNETIC BOLT
ATTACHMENT 16mm



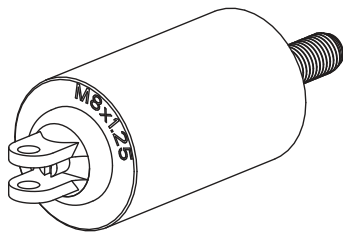
USE W/ M12 SHCS

791980
MAGNETIC HOLE
ATTACHMENT 10mm

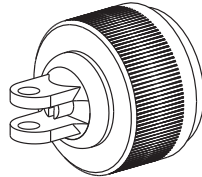


USE W/ M12 SHCS

CK110083
THREAD-IN TARGET x 2" Lg.
M8 x 1.25

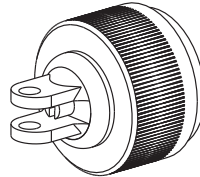


780134
MAGNETIC BOLT
ATTACHMENT 12mm



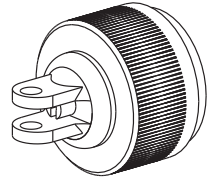
USE W/ M8 SHCS

CK110091
MAGNETIC BOLT
ATTACHMENT 18.5mm



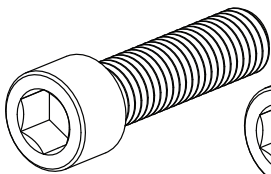
USE W/ M14 SHCS

791982
MAGNETIC HOLE
ATTACHMENT 12mm

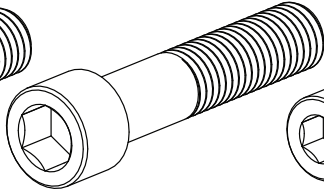


USE W/ M14 SHCS

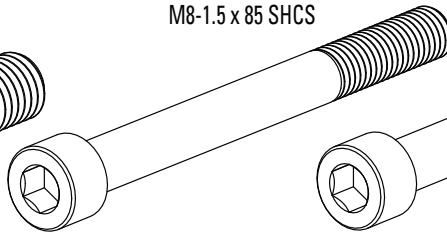
CK130057
M14-2.0 x 50 SHCS



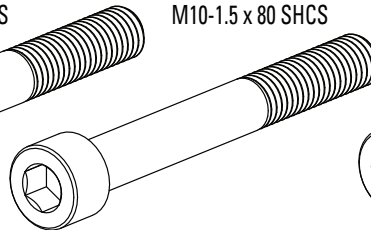
CK130225
M14-2.0 x 65 SHCS



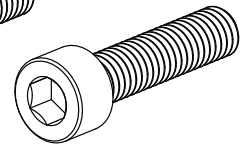
CK130522
M8-1.5 x 85 SHCS



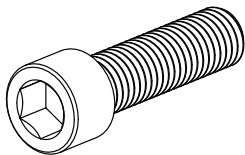
CK130059
M10-1.5 x 80 SHCS



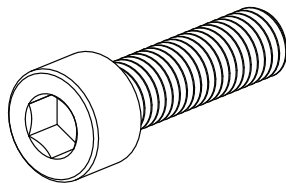
CK130058
M6-1.0 x 25 SHCS



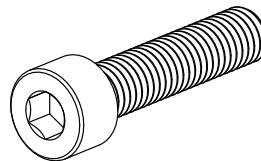
CK130077
M12-1.75 x 50 SHCS



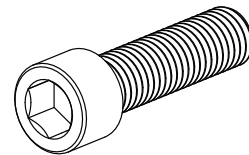
CK130060
M10-1.5 x 35 SHCS



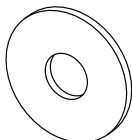
CK130061
M8-1.25 x 35 SHCS



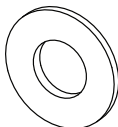
502085
M12-1.75 x 45 SHCS



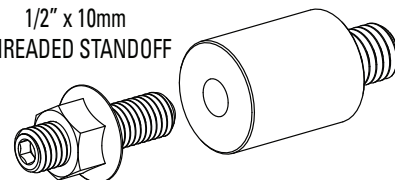
41673
M10 x 30 O.D.
FLAT WASHER



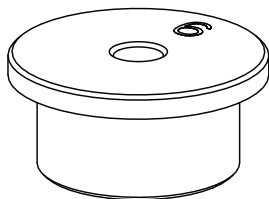
019095
1/2" ASTM F436
FLAT WASHER



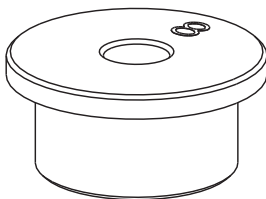
CK110283
1/2" x 10mm
THREADED STANDOFF



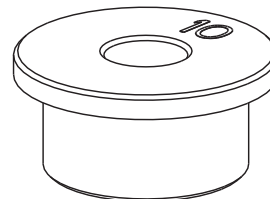
502165
PILOT BUSHING
6mm



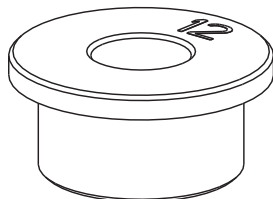
502086
PILOT BUSHING
8mm



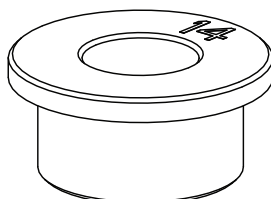
502027
PILOT BUSHING
10mm



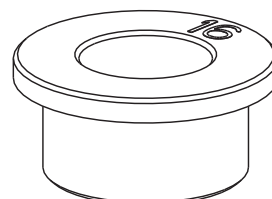
502028
PILOT BUSHING
12mm



502029
PILOT BUSHING
14mm



502030
PILOT BUSHING
16mm



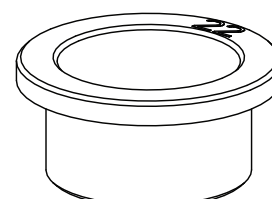
502035
PILOT BUSHING
18mm



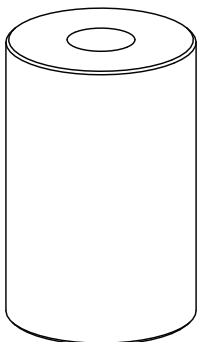
502036
PILOT BUSHING
20mm



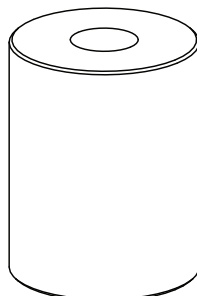
502037
PILOT BUSHING
22mm



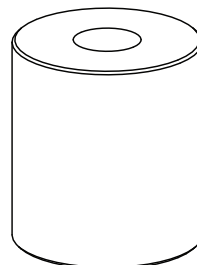
CK120489
SPACER BAR



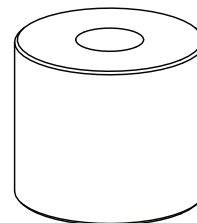
CK120110
SPACER BAR

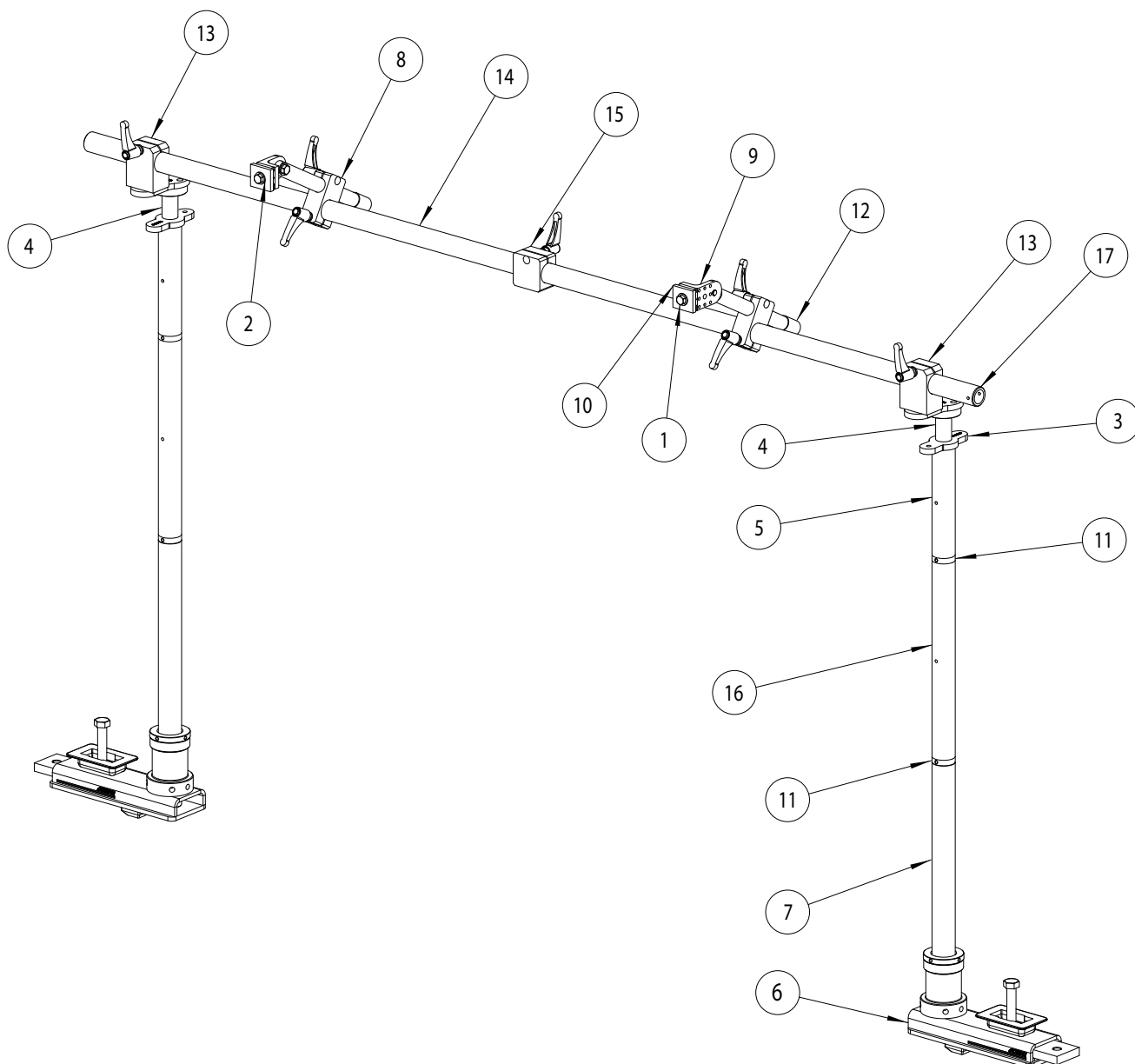


CK120482
SPACER BAR



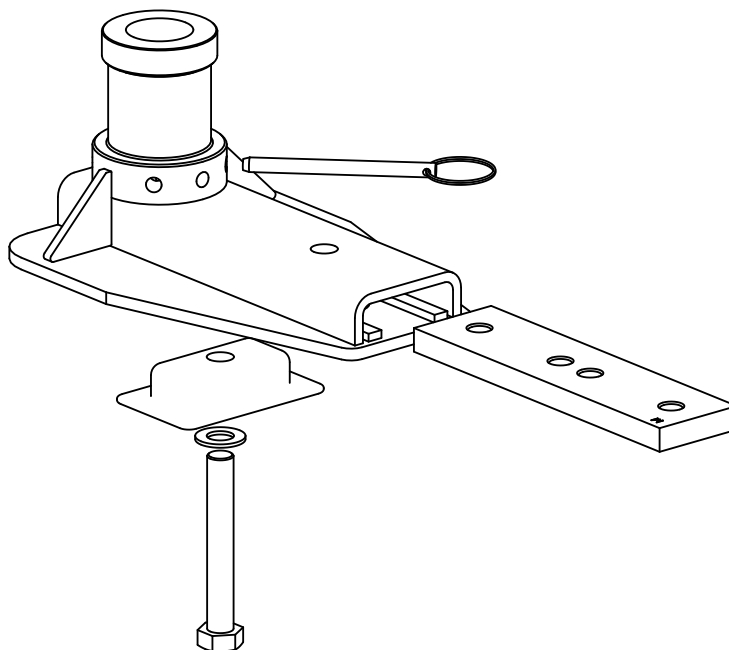
CK120533
SPACER BAR





ITEM	QTY	PART NO.	DESCRIPTION
1	2	010625	BOLT, 1/2-13 X 1-1/4, HHCS, GRADE 8, PLATED
2	2	019095	WASHER, 1/2" ASTM F436
3	2	502015	WING NUT, PARTS HOLDING - RH
4	2	502039	STRUCTURAL HOLDING ADAPTER ASSEMBLY
5	2	502061	10" EXTENSION TUBE, PARTS HOLDING
6	2	502128	NARROW STRUCTURAL HOLDING BASE ASSEMBLY
7	2	502147	18" TUBE BASE STAND ASS'Y.
8	2	638068	OVERHEAD BOOM CLAMP ASSY
9	2	638073	WRIST BLOCK
10	2	638133	JAW CLAMP ASSEMBLY, PARTS HOLDING
11	4	502032N	ADAPTER EXTENSION TUBE PARTS HOLDING
12	2	CK110090	OVERHEAD ARM ASSEMBLY
13	2	CK110231	BOOM CLAMP, END -ASSM-
14	1	CK110243	OVERHEAD BEAM SHORT ASSEMBLY
15	1	CK110244	OVERHEAD CENTER BOOM CLAMP ASSY
16	2	CK120413N	18" EXTENSION TUBE NITRIDE
17	1	CK120422	OVERHEAD BEAM, PARTS HOLDING

Once the proper configuration has been determined, assemble the required Structural Holding components on the base stand. The base stand should be loosely secured to the frame machine deck using M20x2.5 hardware and a UAS fastener plate. The M20x2.5 hardware will be fully tightened after the Structural Holding stand is located properly. Once the Structural Holding components are assembled, they can be fully tightened using the included spanner wrenches.



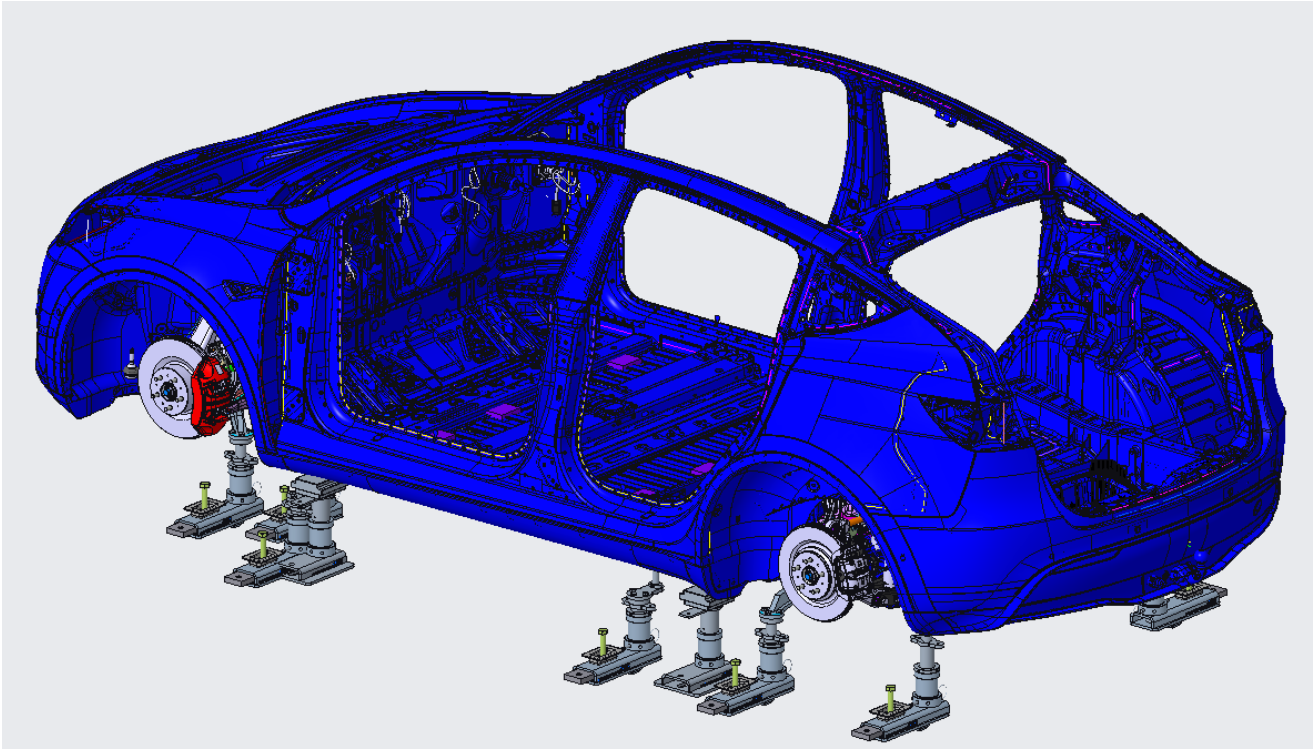
Securing New Part

Secure the replacement part to the Structural Holding stand using the foundation adapter and fixtures. Horizontal adjustment of the part can be made by lightly tapping on the stand base. Once the part is located correctly in both horizontal directions, torque down the stand base using a 30 mm wrench or socket. Vertical adjustment of the parts is achieved by turning the clockwise rotation will raise the stand. The turnbuckle section should turn easily by hand, but there is a provision to use a spanner wrench if necessary. Once the part is at the proper vertical position, tighten the top and bottom wing nuts to lock the turnbuckle center section in place and insert the release pin into one of the three hole positions.

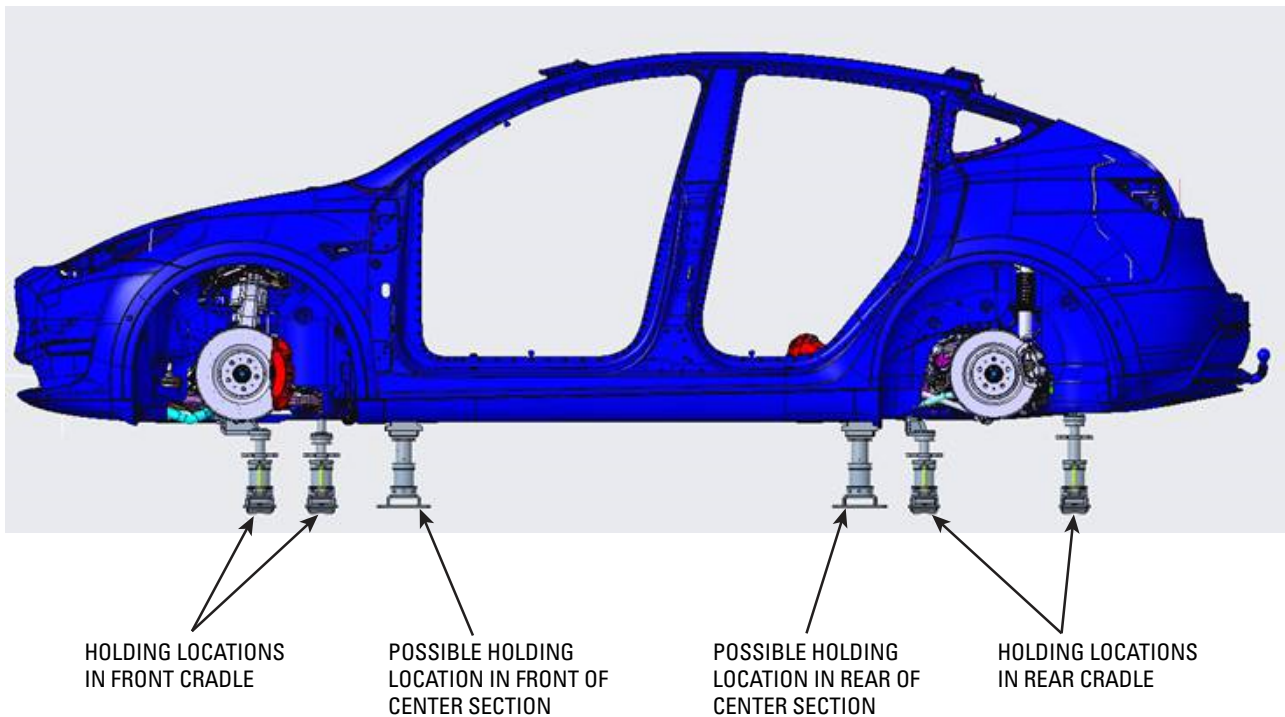
Note: For best results, the two-ear and three-ear wing nuts should be threaded away from the turnbuckle center section when making vertical position adjustments.

Model Y Set-up

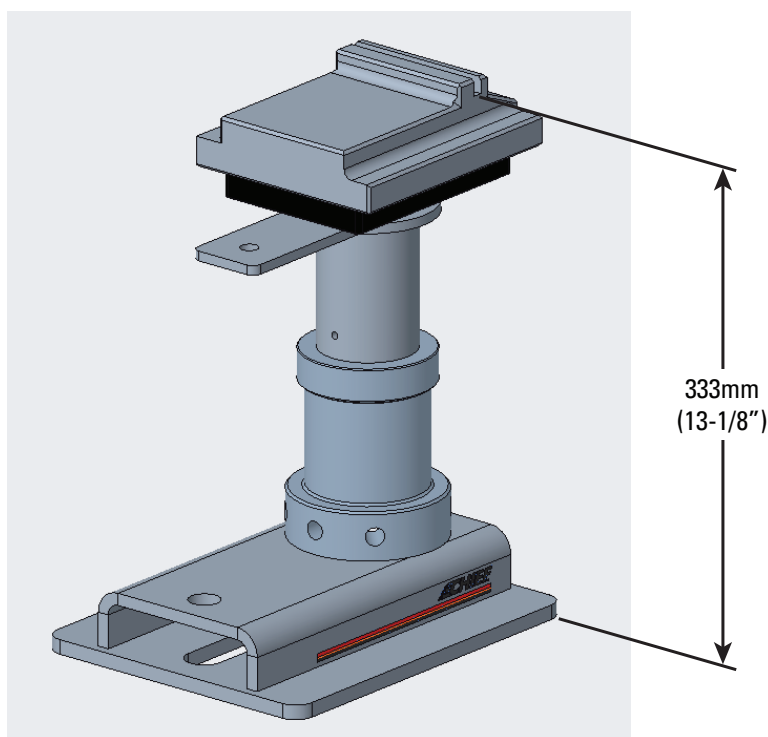
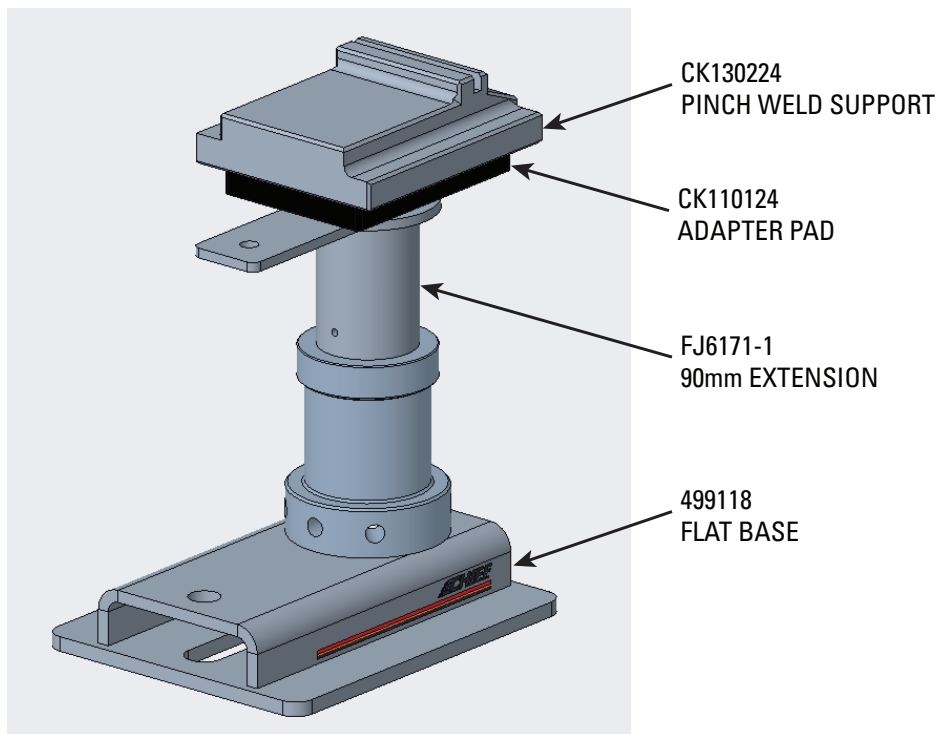
Positioning of the vehicle on the deck is very important, and the vehicle should be carefully located on the frame machine based on the type, severity and location of the damage. Once positioned, refer to your manual for proper installation and set-up procedures.



1. The initial setup requires four center section locations to be installed. Two in the front of the center section and two in the rear of the center section. Additionally, four fixtures must be placed on the front and rear cradle, for a total of eight point holding for entire vehicle, see example below.



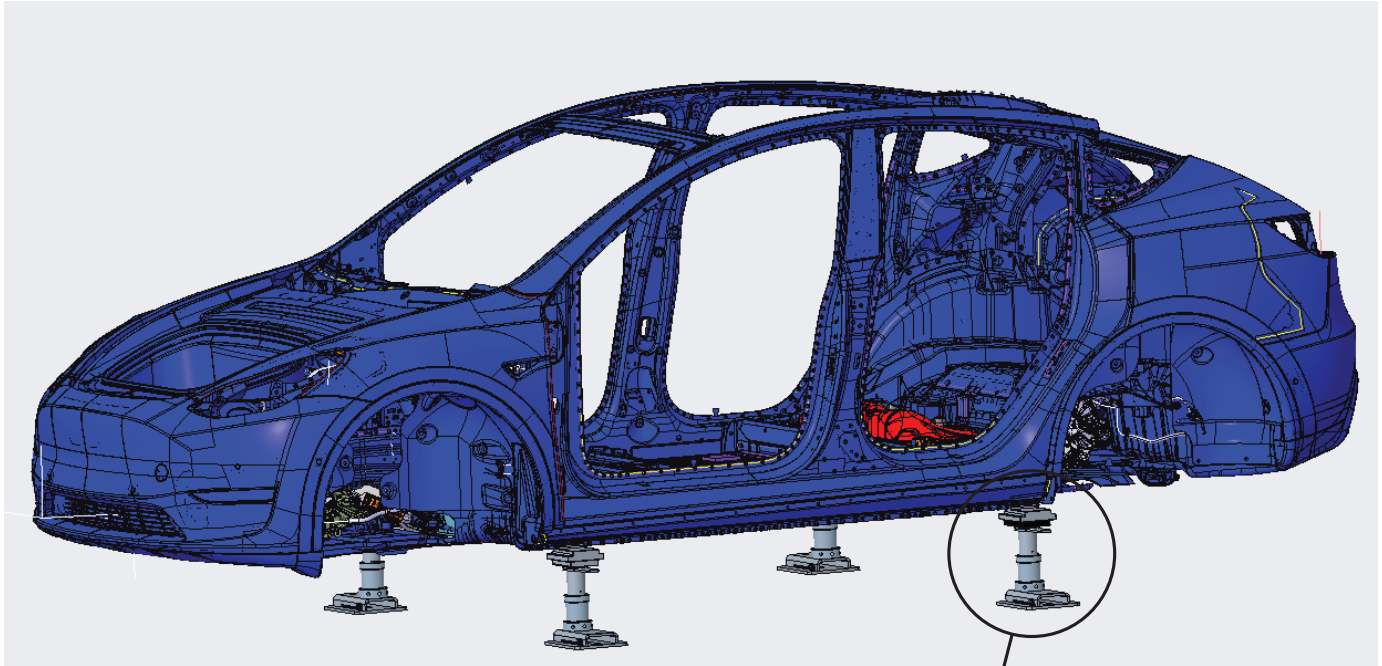
Center Section Base Mounting



Setting a level datum for Center Section:

1. Assembly Base (499118), 90mm Extension (FJ6171-1), Adapter Pad (CK110124), and Pinch Weld Support (CK130224) .
2. Adjust Adapter Pad to establish level datum, Pinch Weld cut height 333mm (13-1/8").
3. Assembled Base Stand will be placed in each corner of Center Section of vehicle, as outlined in the following pages.
4. Final adjustments to raise or lower is achieved by rotating handle.

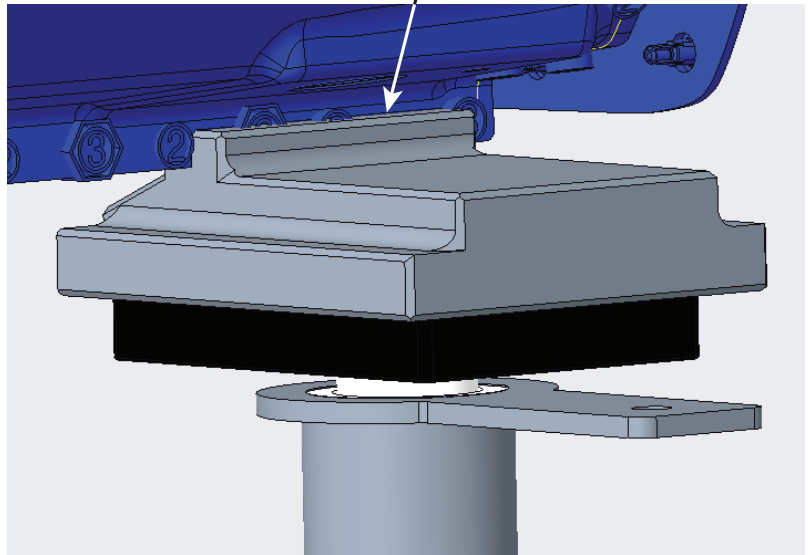
Center Section Pinch Weld Supports



1. Locate four (4) Jacking Points on underside of vehicle.

2. Place Base Stand at each Jacking Point located in center section of vehicle.

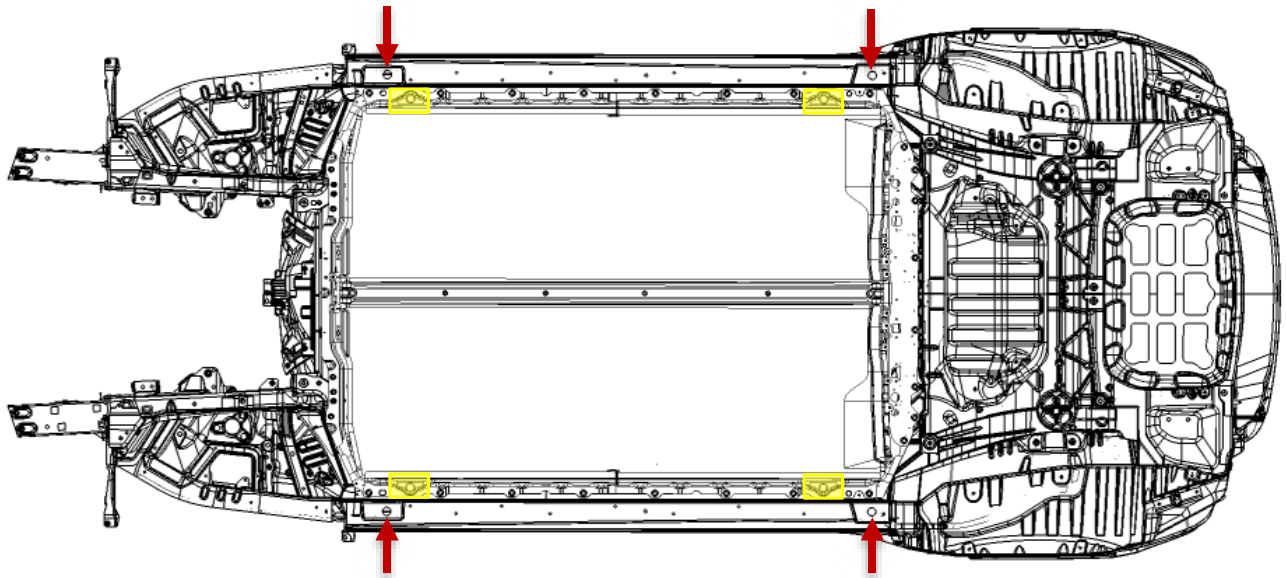
3. Confirm Base Stand Assembly is adjusted to 333mm (13-1/8") at the pinch weld to maintain a level datum for placing fixtures.



Pinch Weld Support

Location Requirements

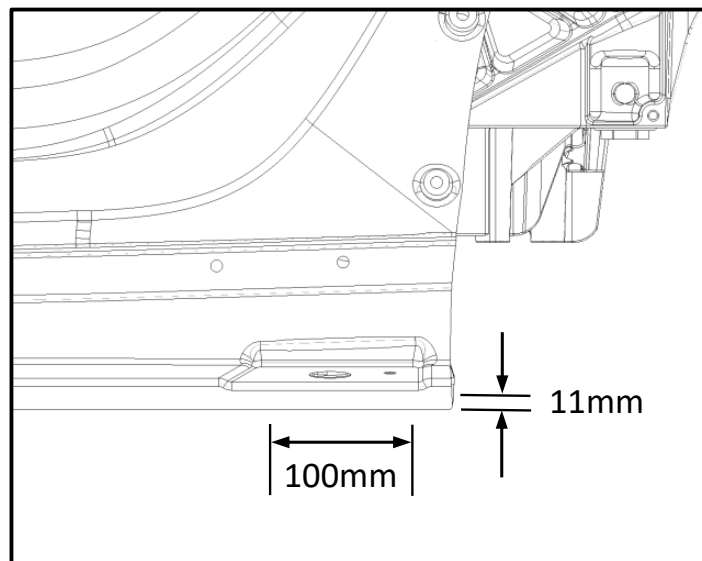
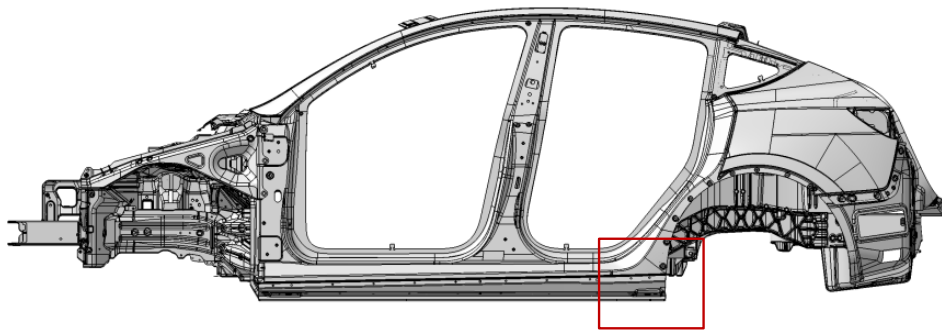
- Clamps must be located under the jack pad features on the Body Side Outer (indicated by red arrows).
- Clamps must not block access to factory lift points on the HV battery enclosure (indicated in yellow).
- Clamps must only engage the flat surfaces of the pinch weld flange.
- After stands are placed in each corner of center section at points shown, lower vehicle onto pinch weld supports (CK130224) and confirm vehicle is at a level datum.
- Continue to place fixtures as required.



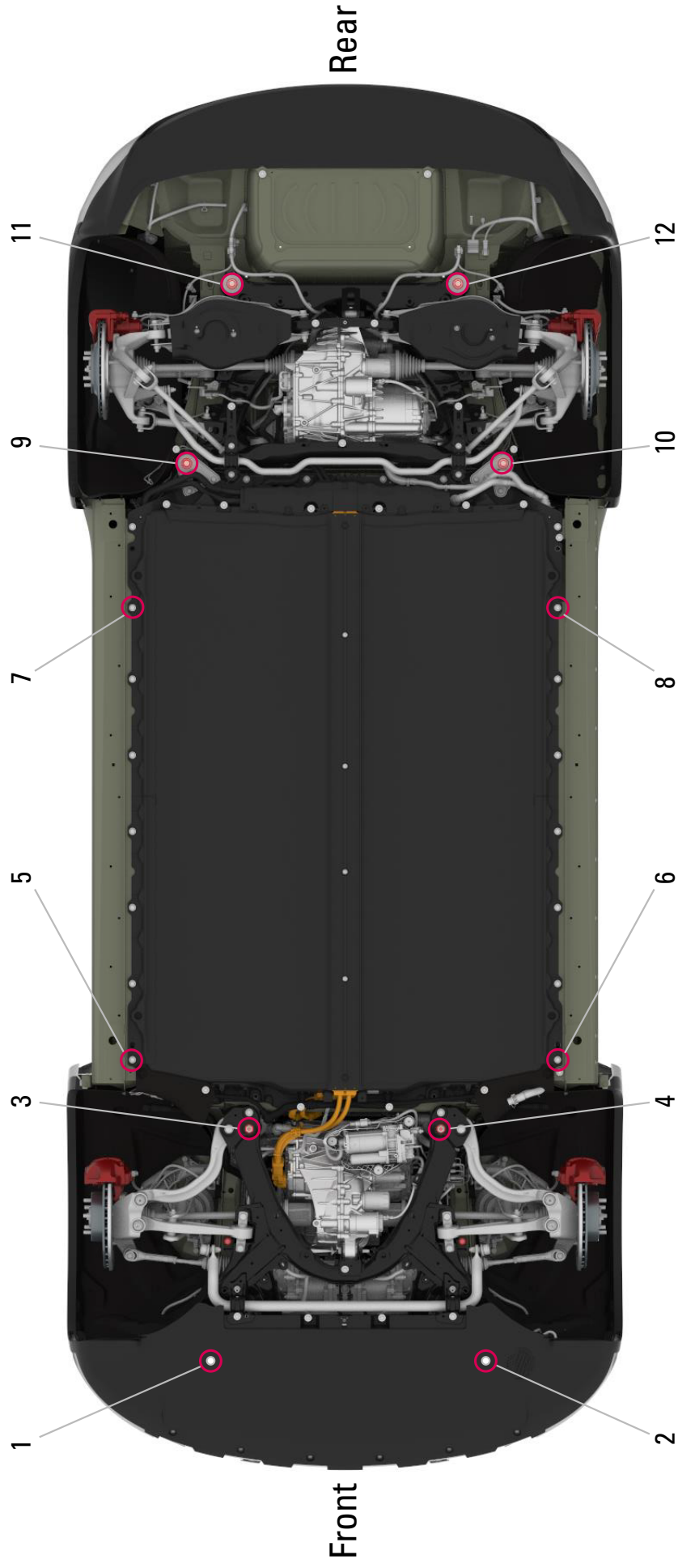
Pinch Weld Support

Surface Area Requirements

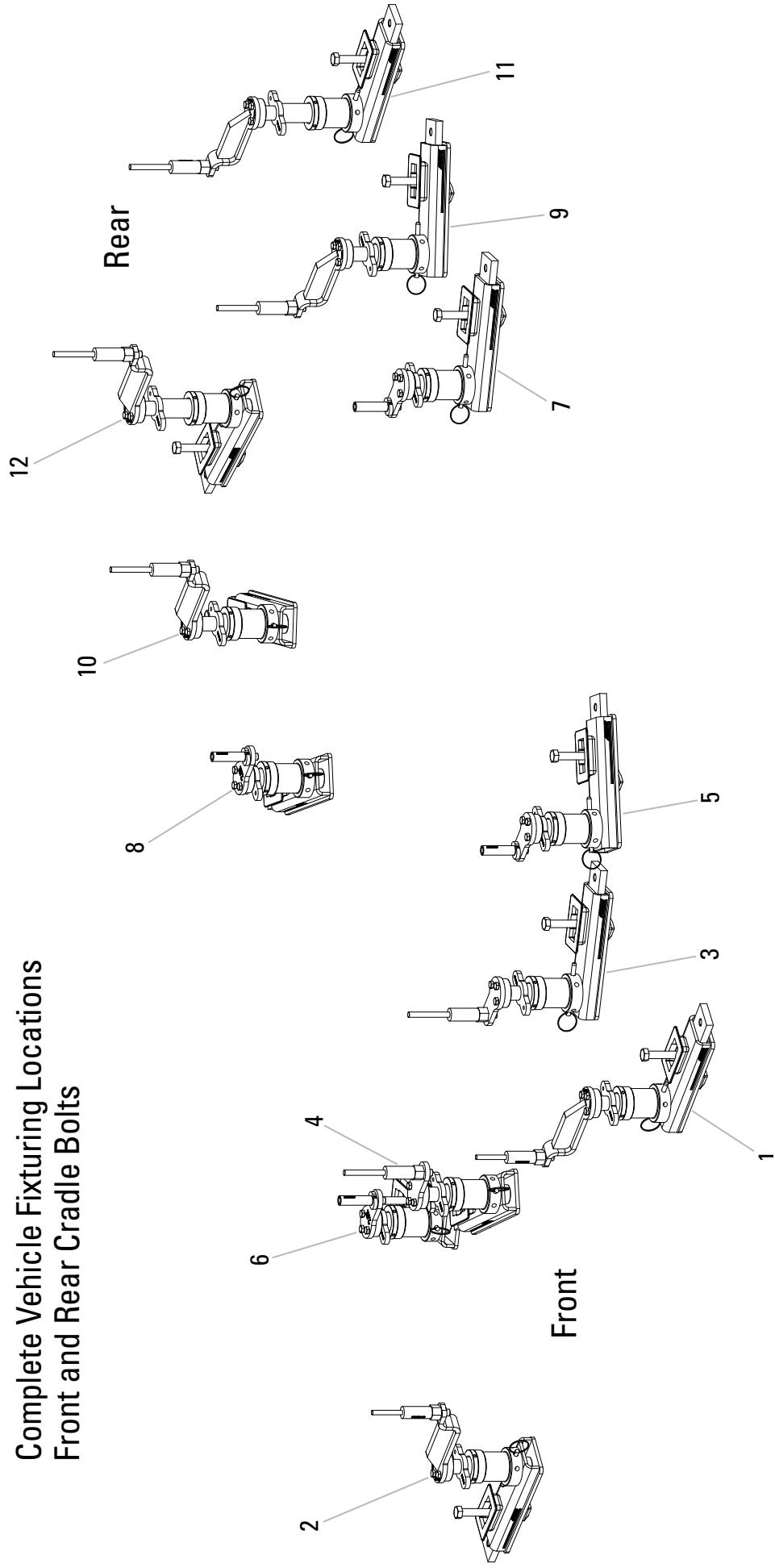
- Minimum of 4 clamps required when securing vehicle.
- Each clamp must engage a minimum of 100mm in cumulative length of pinch weld.
- Each clamp must engage 11mm in height of the pinch weld.



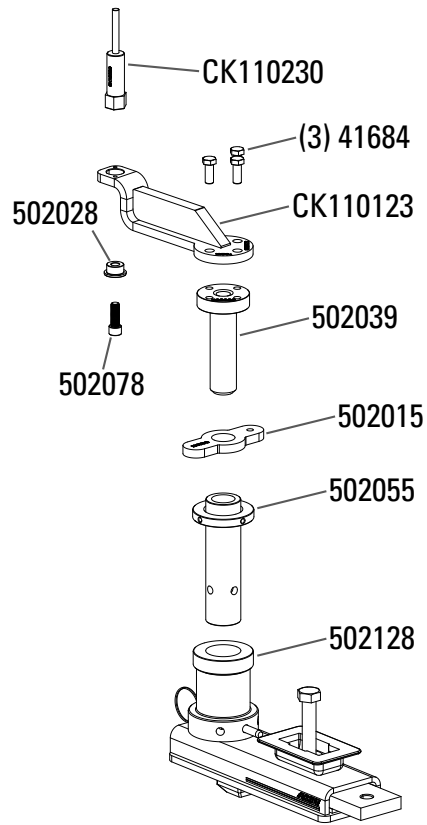
Complete Vehicle Fixturing Locations - Mechanicals In - Front and Rear Cradle Bolts



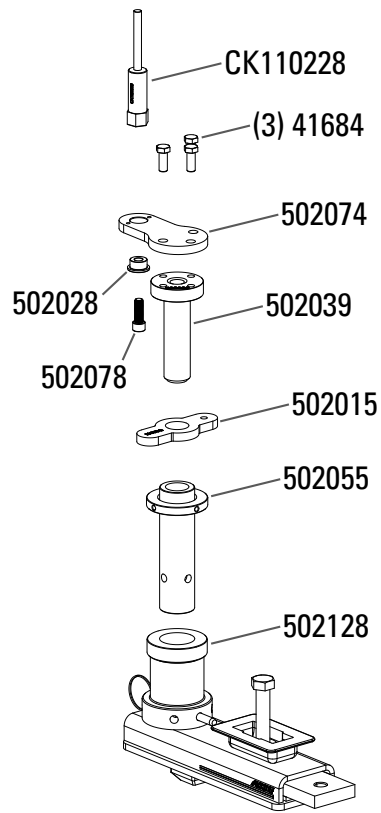
Complete Vehicle Fixturing Locations Front and Rear Cradle Bolts



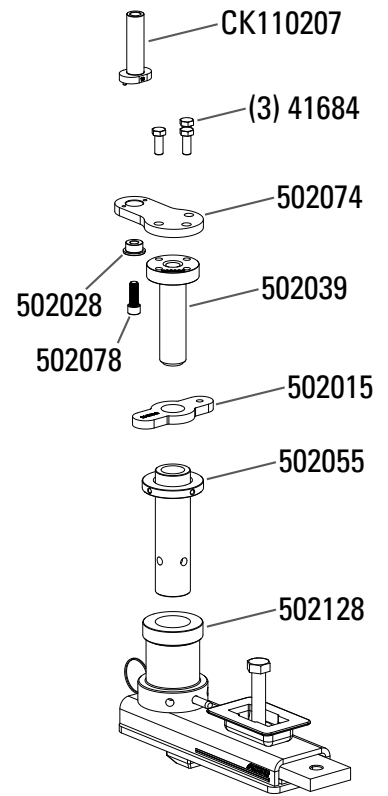
Fixture # 1, 2



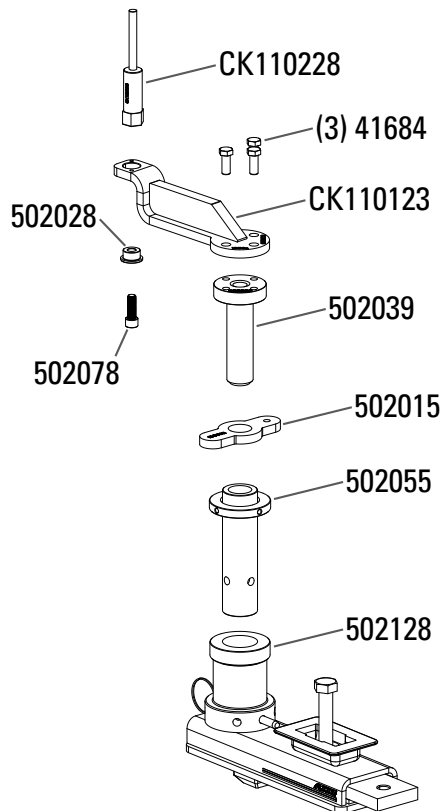
Fixture # 3, 4



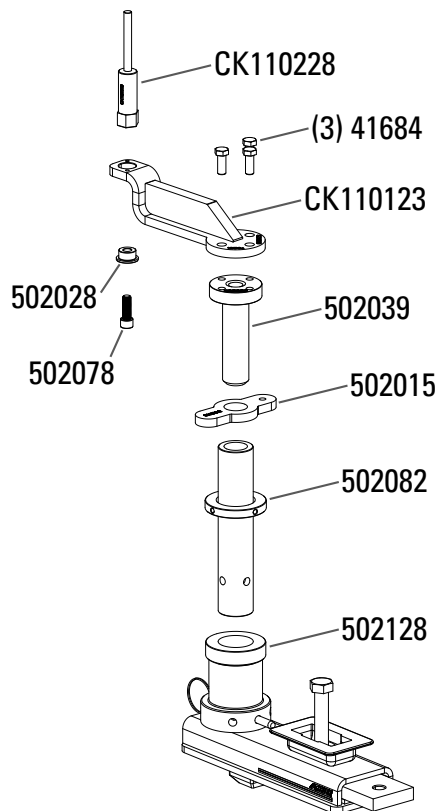
Fixture # 5, 6, 7, 8



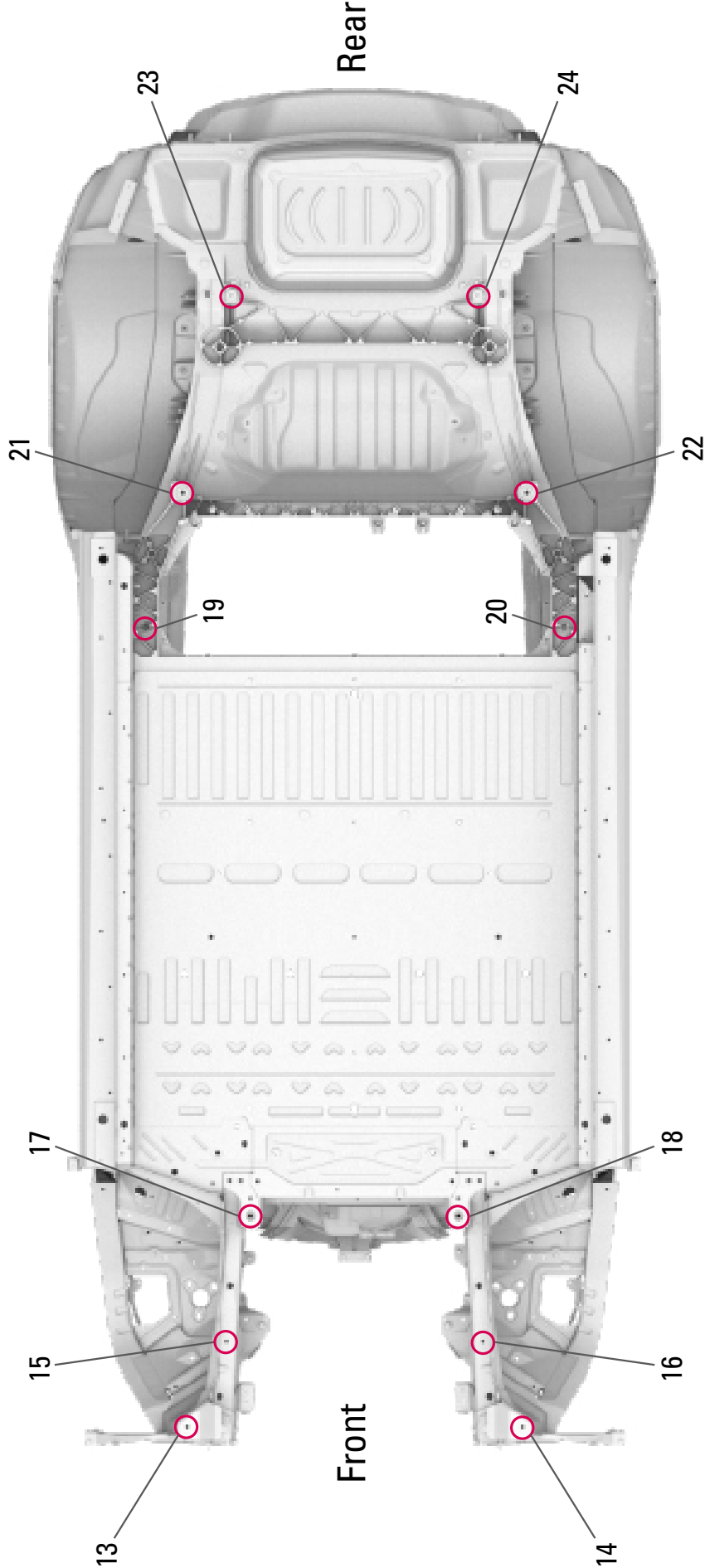
Fixture # 9, 10



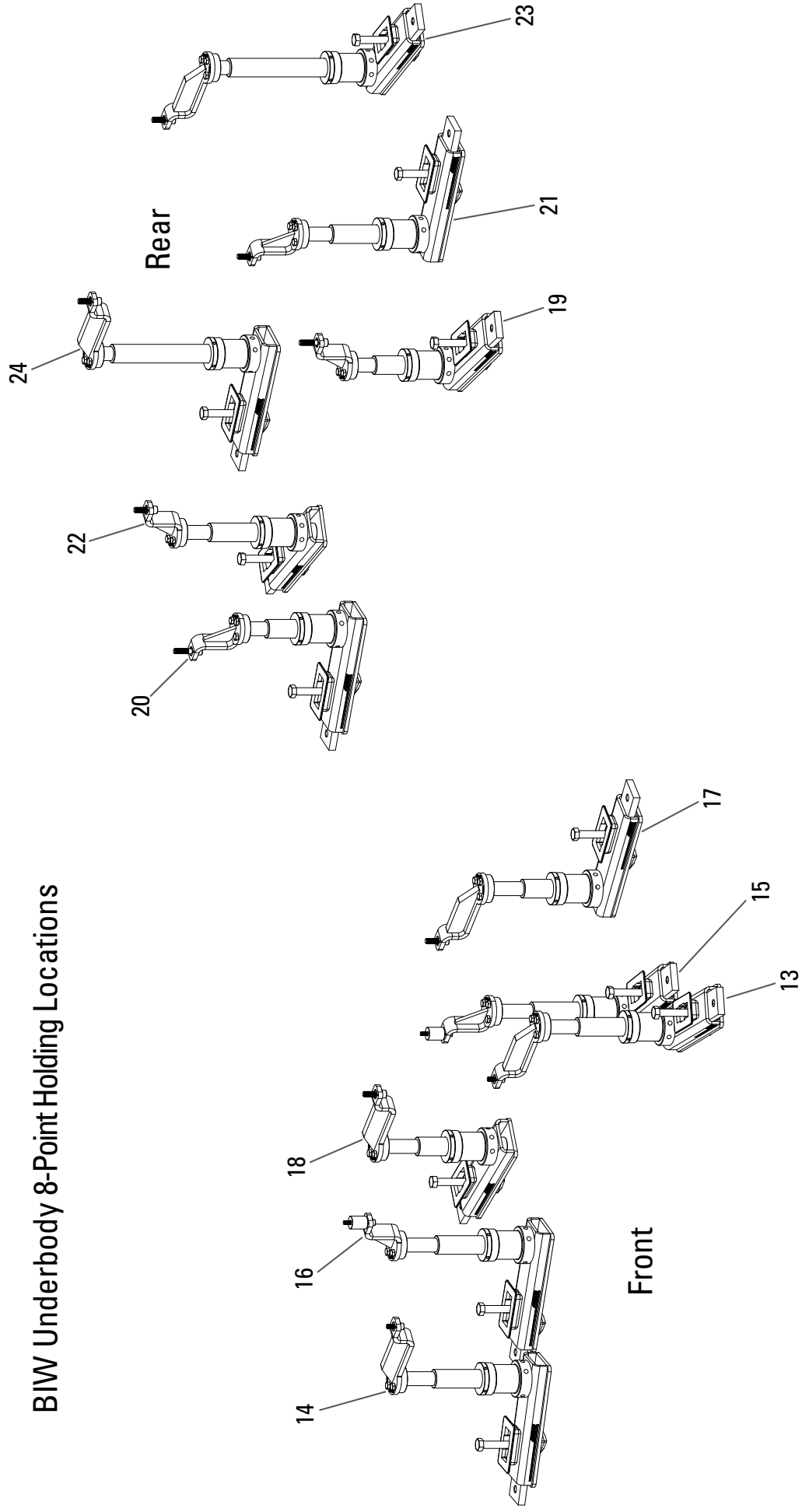
Fixture # 11, 12



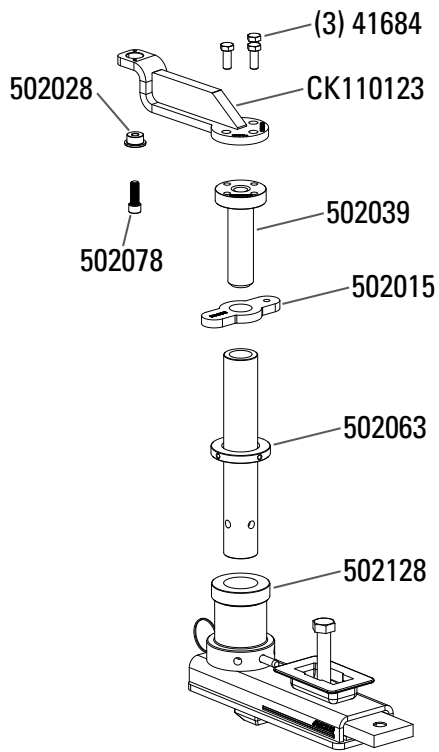
BIW Underbody 8-Point Holding - Mechanicals Out



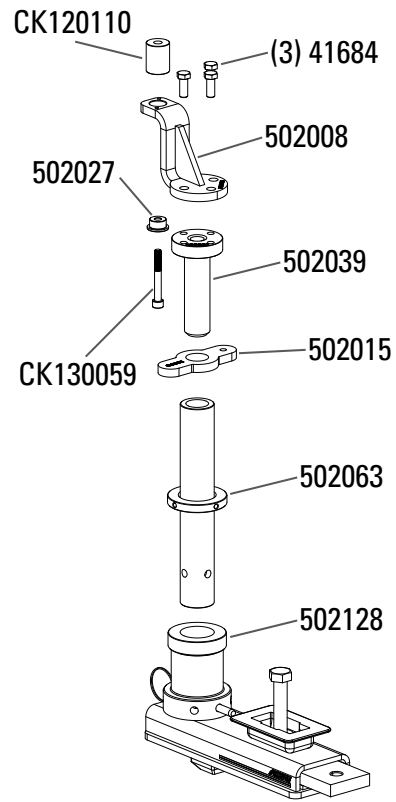
BIW Underbody 8-Point Holding Locations



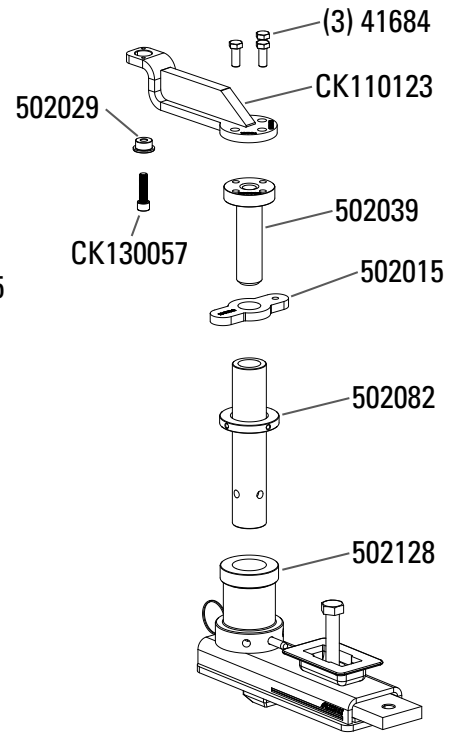
Fixture # 13, 14



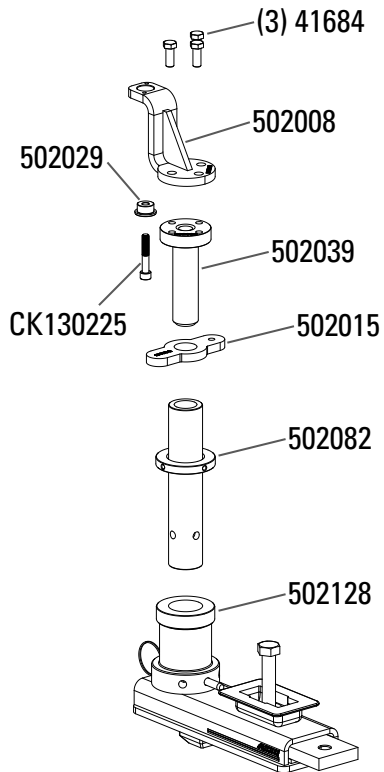
Fixture # 15, 16



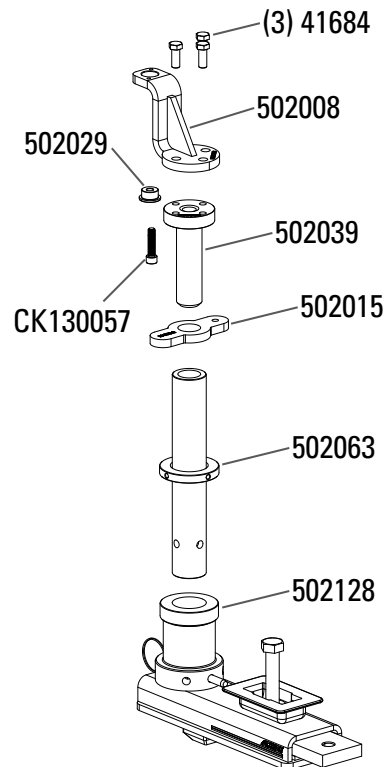
Fixture # 17, 18



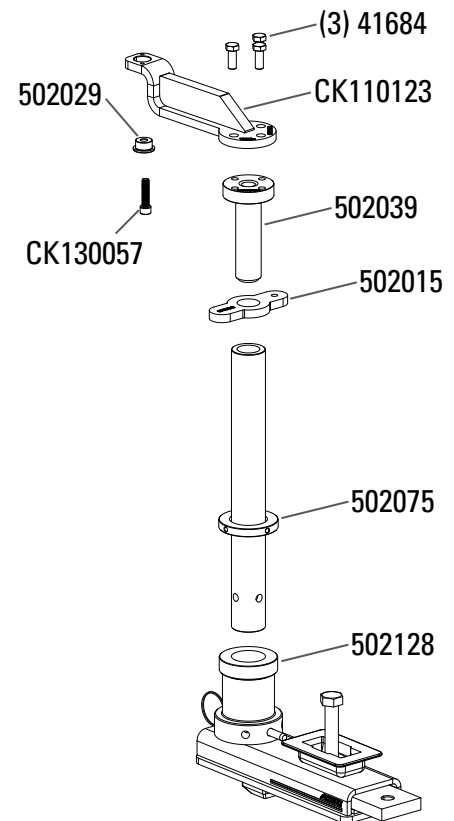
Fixture # 19, 20



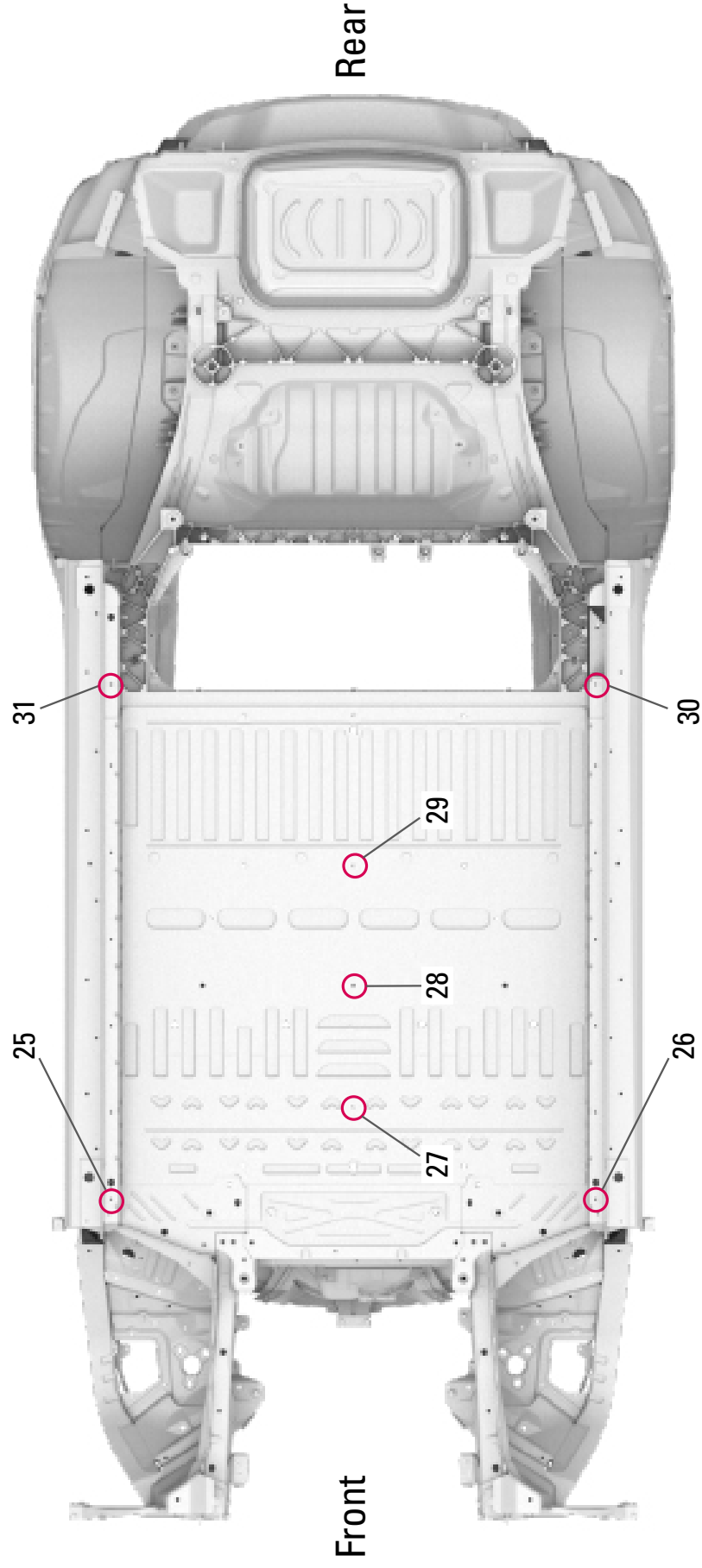
Fixture # 21, 22



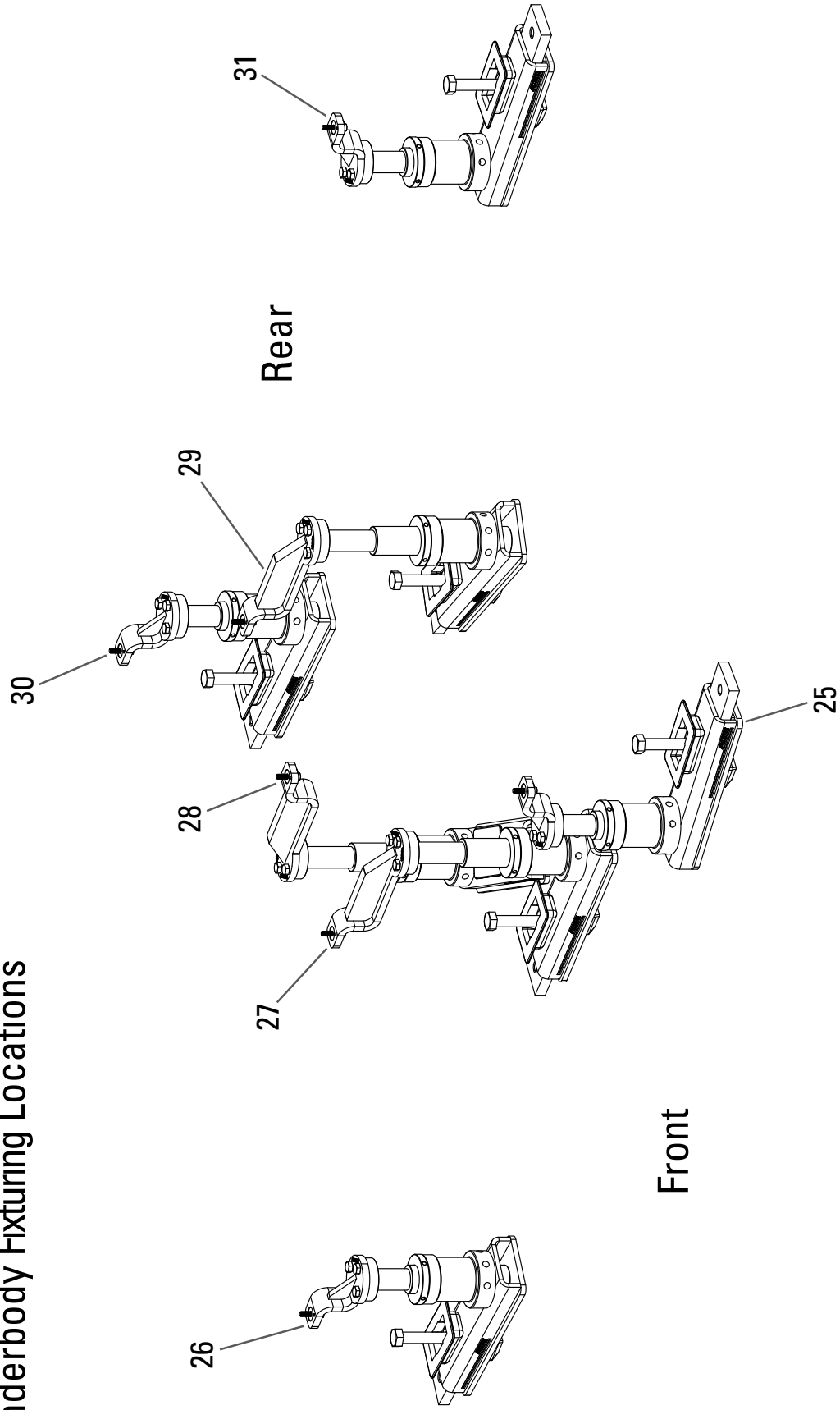
Fixture # 23, 24



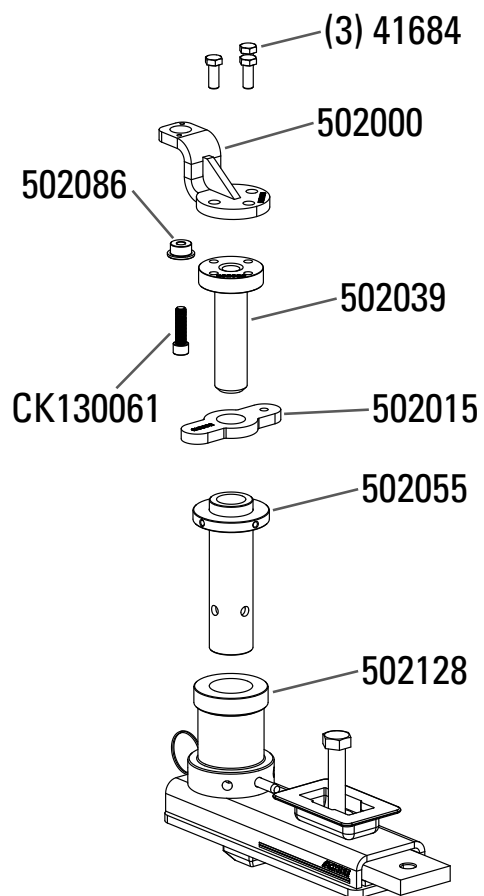
BIW Underbody Fixturing Locations - Mechanicals Out



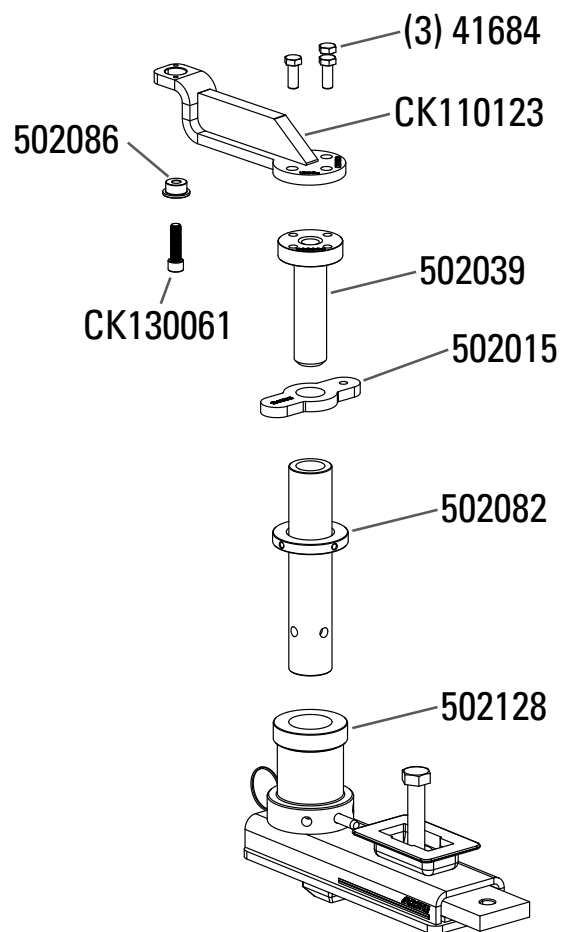
BIW Underbody Fixturing Locations



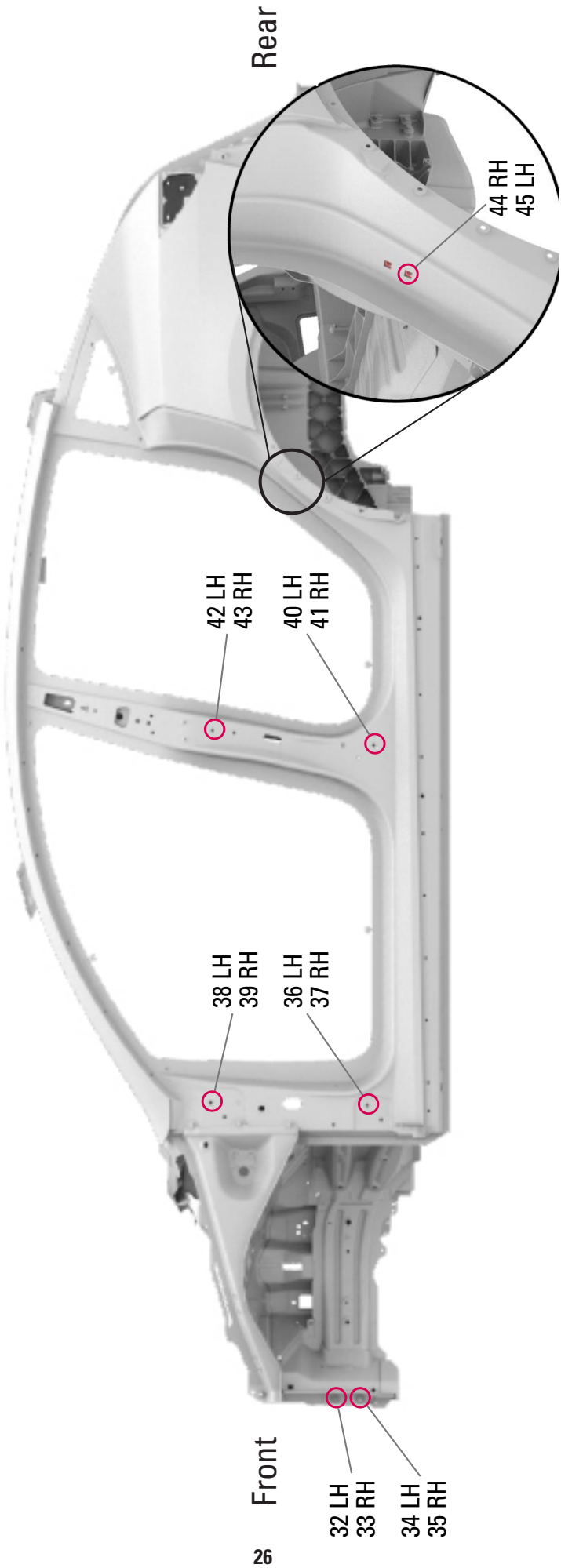
Fixture # 25, 26, 30, 31



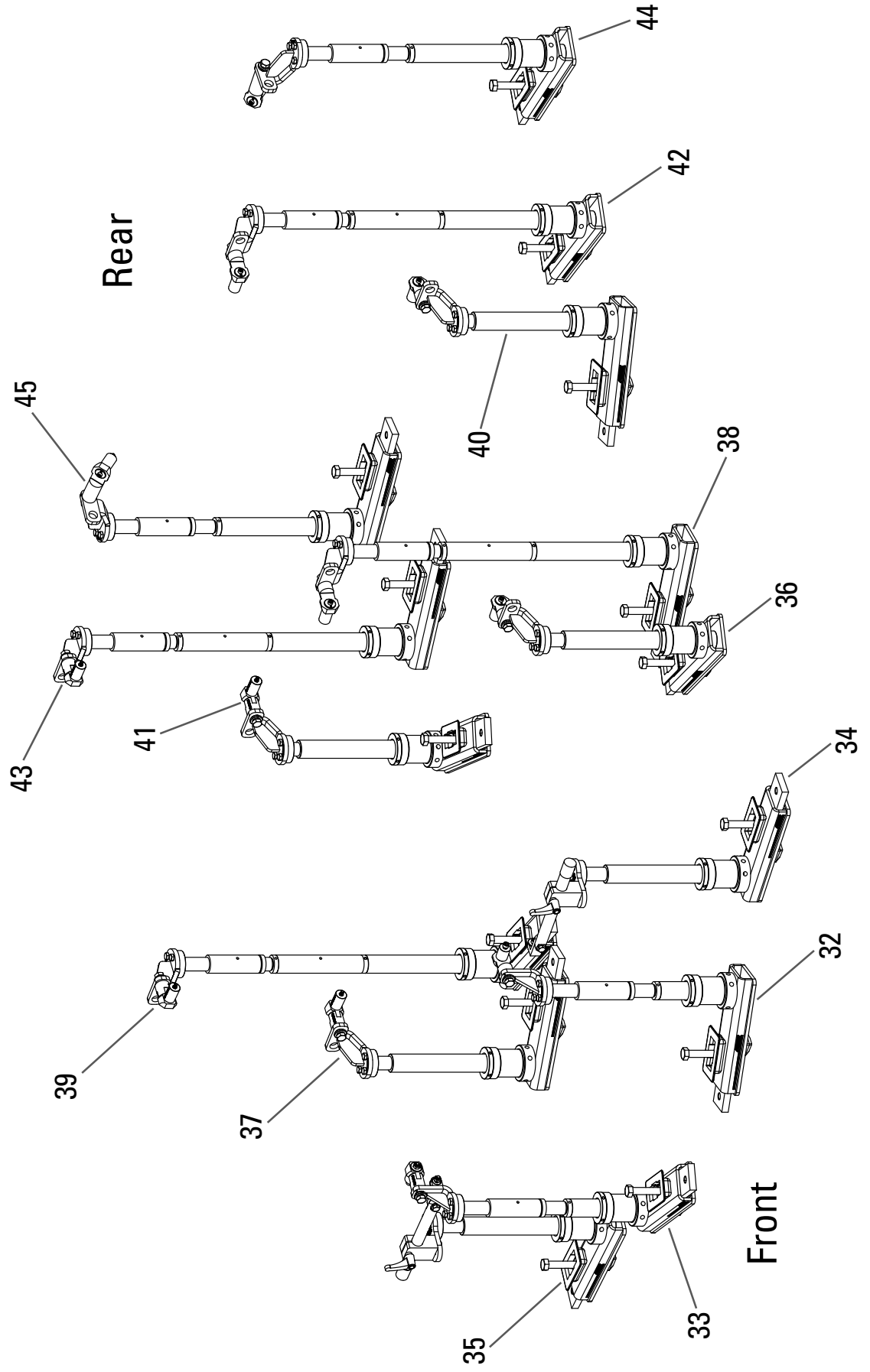
Fixture # 27, 28, 29



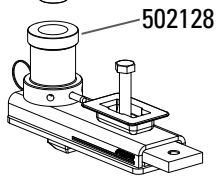
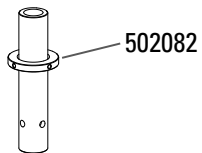
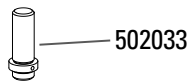
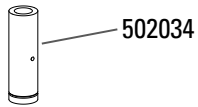
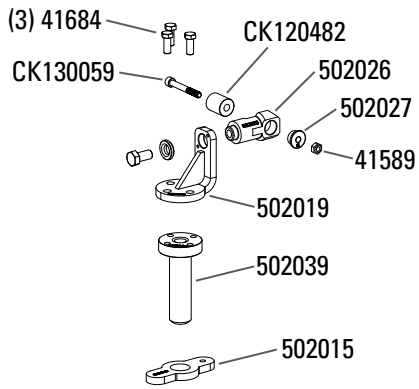
BIW Side Body Fixture Locations - Mechanicals Out



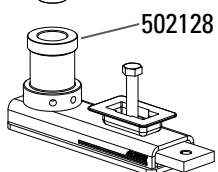
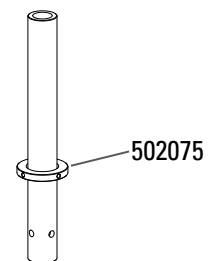
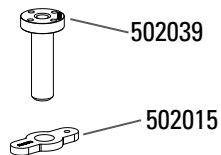
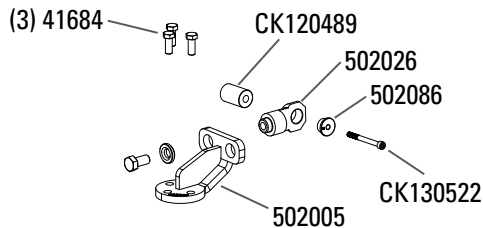
BIW Sidebody Vehicle Fixturing Locations



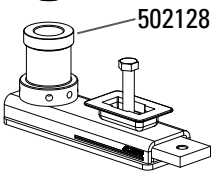
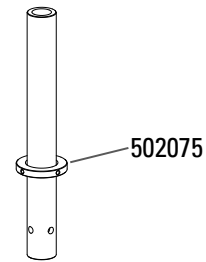
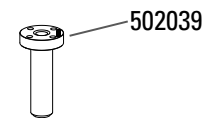
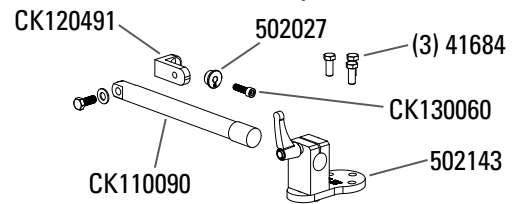
Fixture # 32, 33



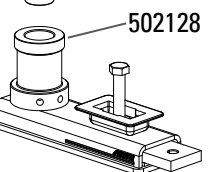
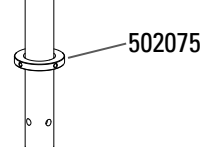
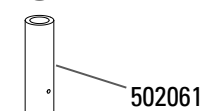
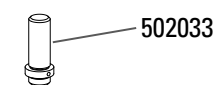
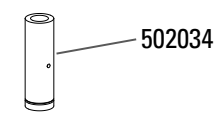
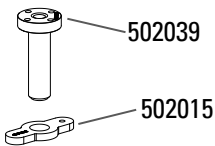
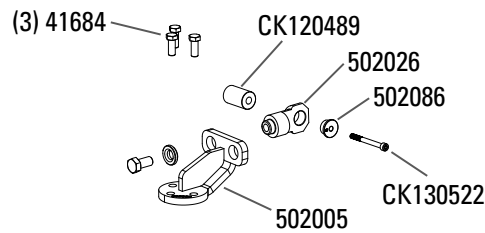
Fixture # 36, 37, 40, 41



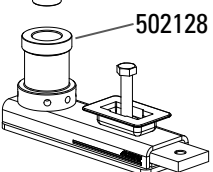
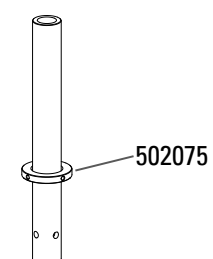
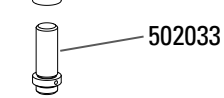
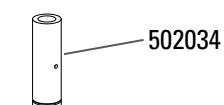
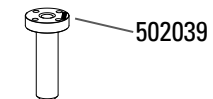
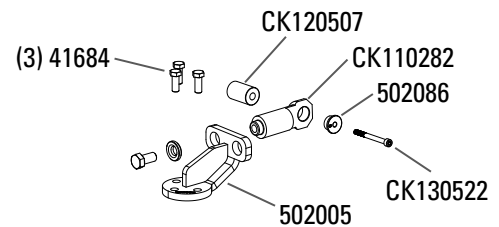
Fixture # 34, 35



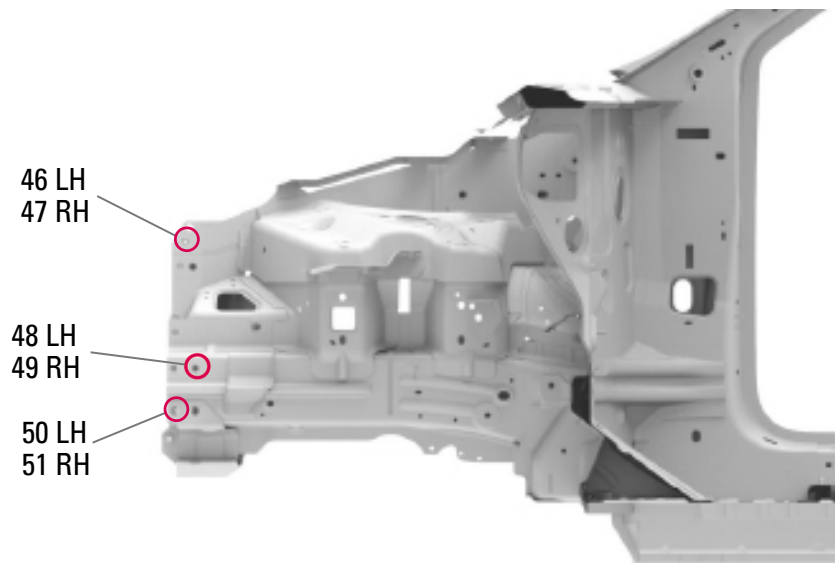
Fixture # 38, 39, 42, 43



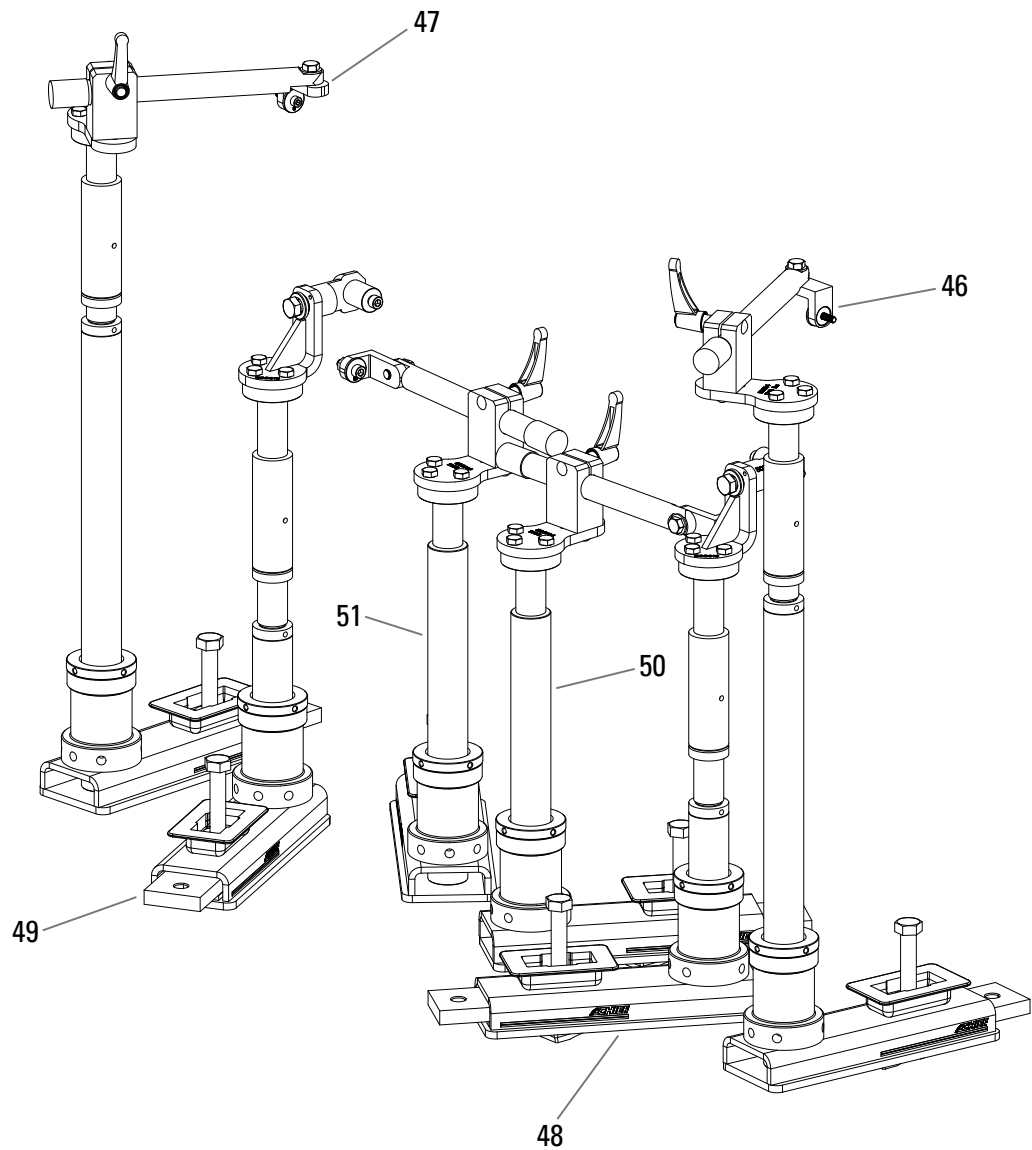
Fixture # 44, 45



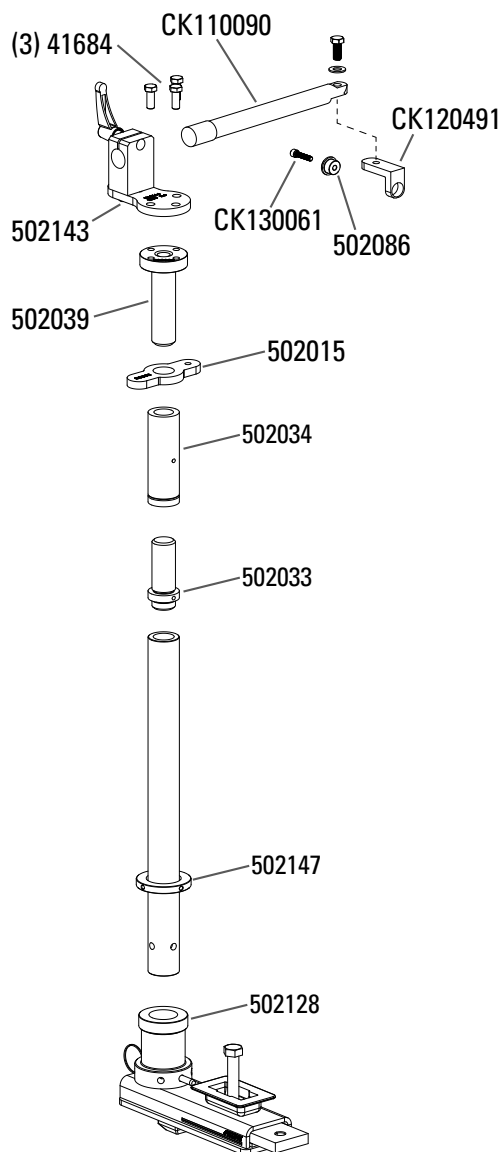
BIW Front Rail Fixture Locations - Mechanicals Out



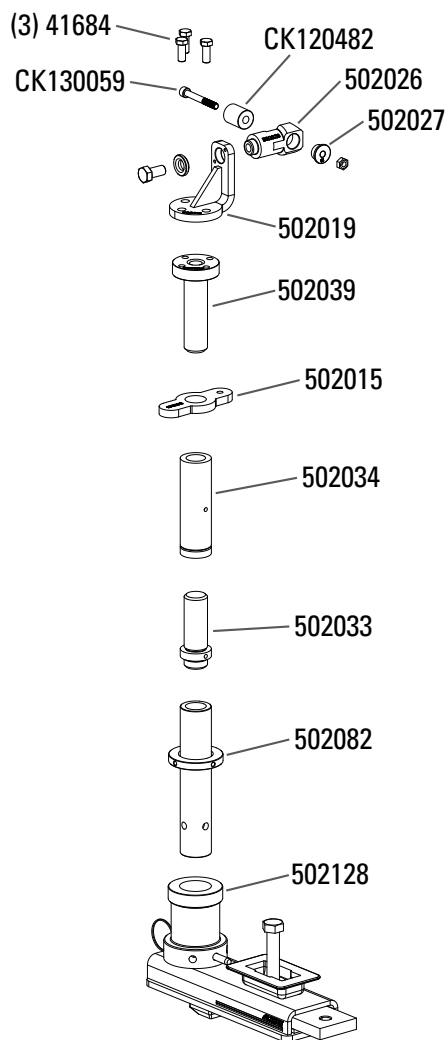
BIW Front Rail Vehicle Fixturing Locations



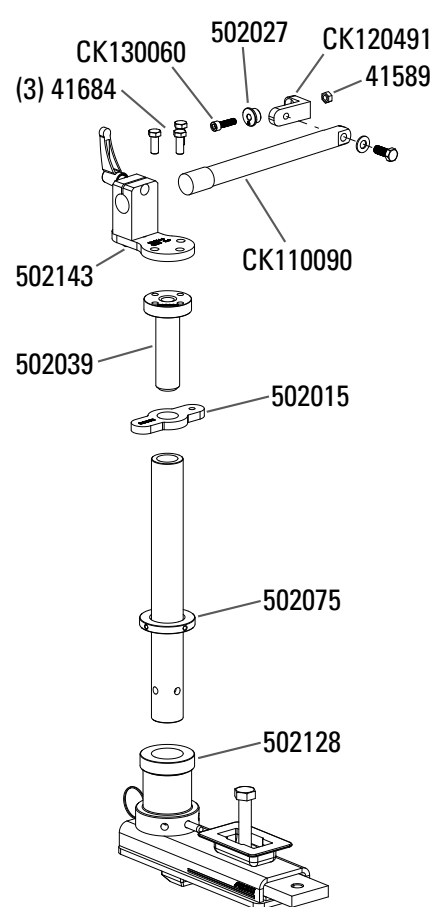
Fixture # 46, 47



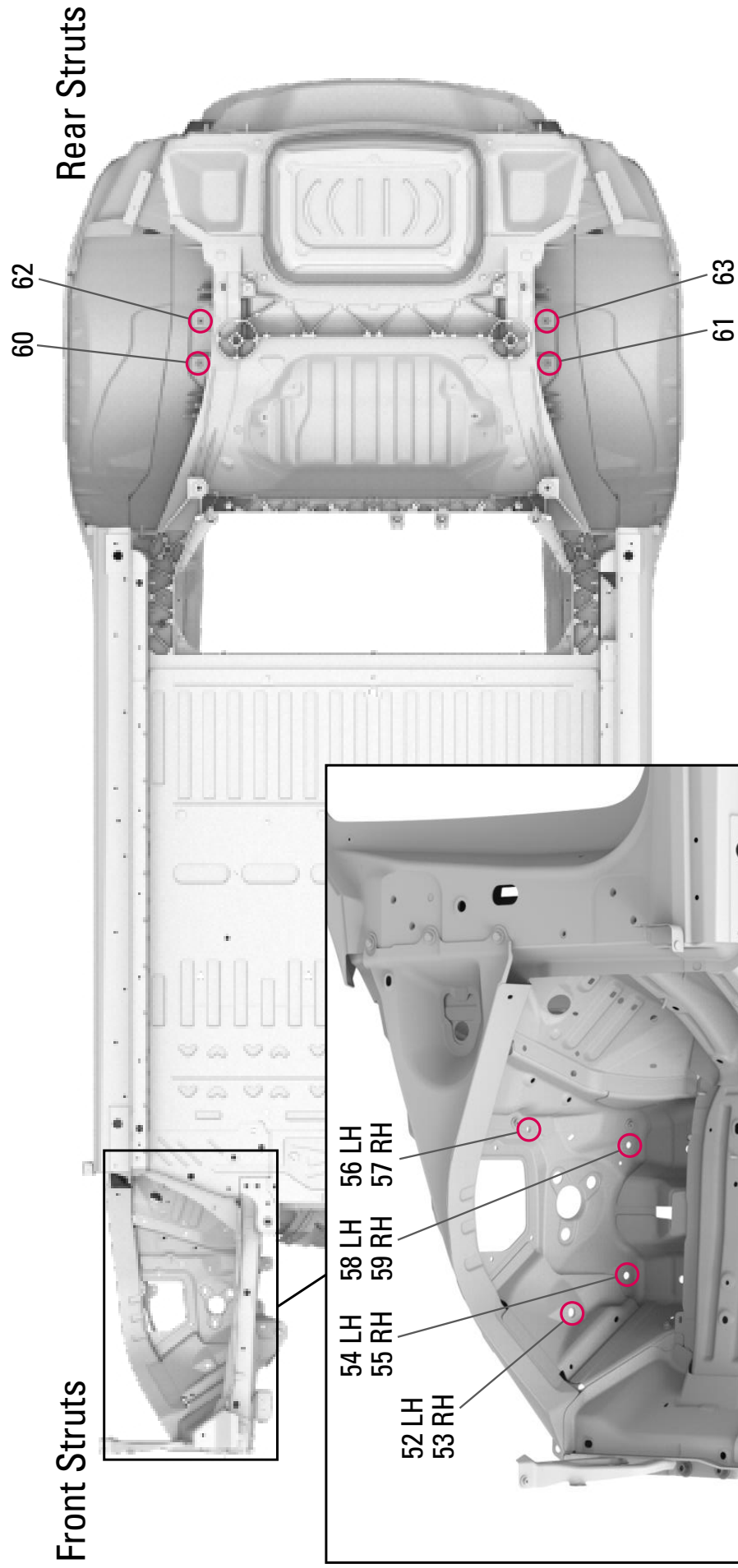
Fixture # 48, 49



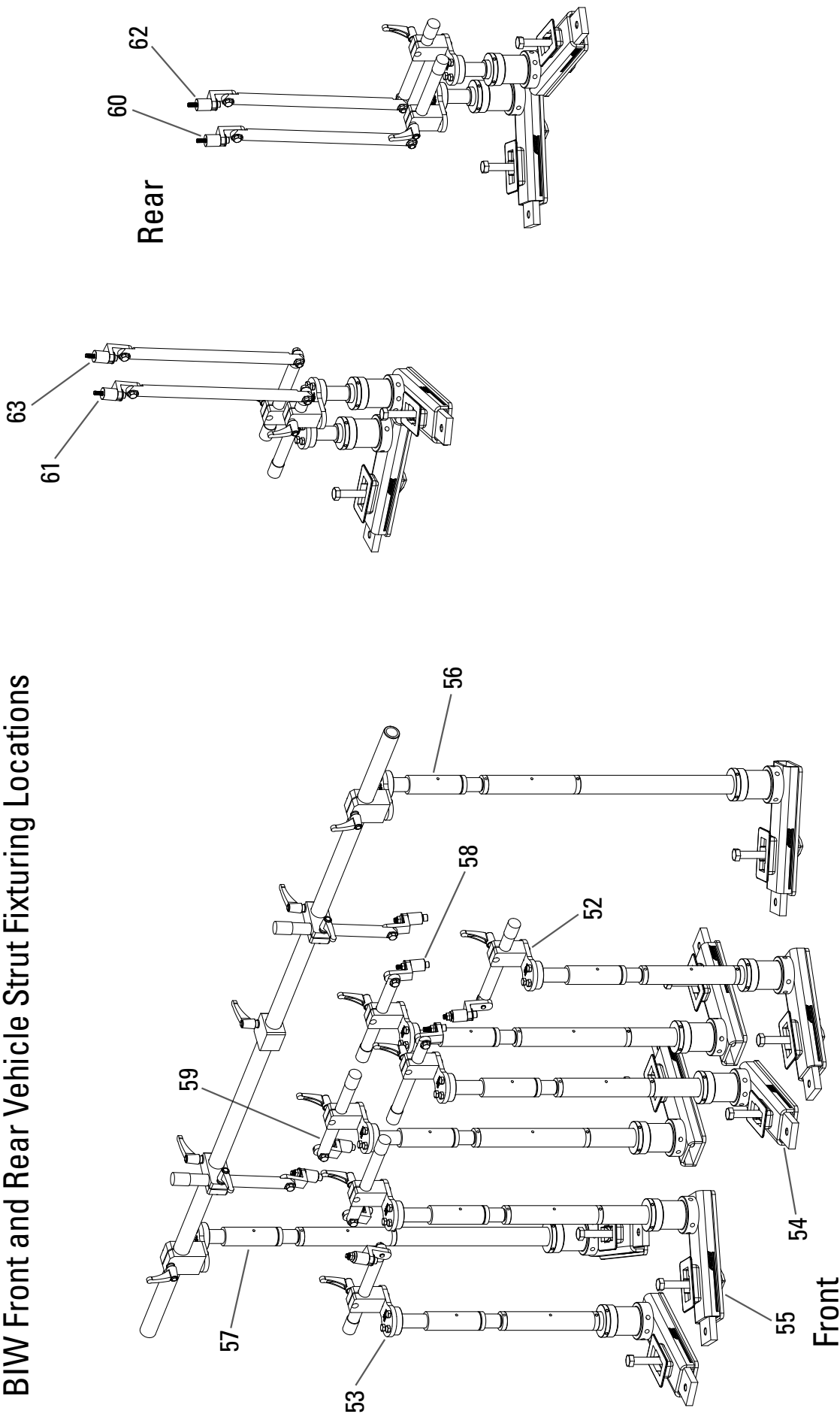
Fixture # 50, 51



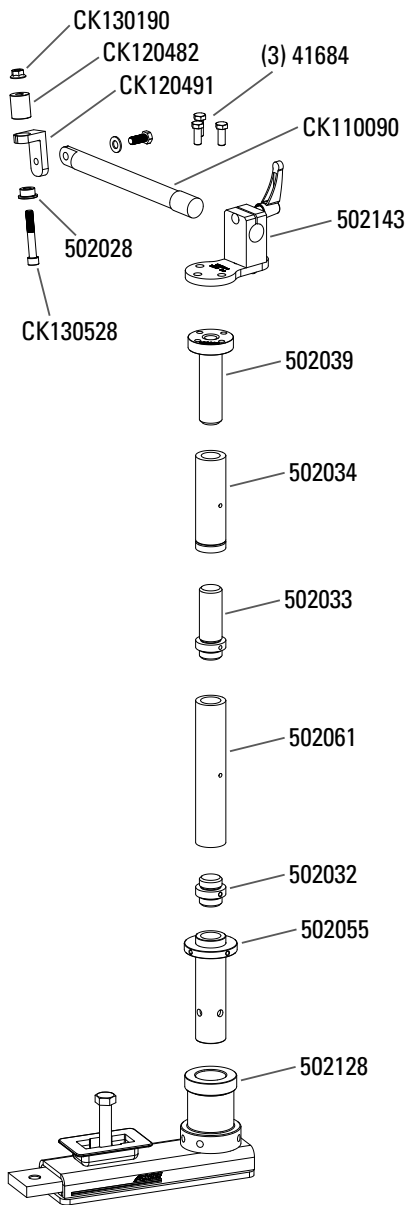
BIW Strut Locations - Mechanicals Out



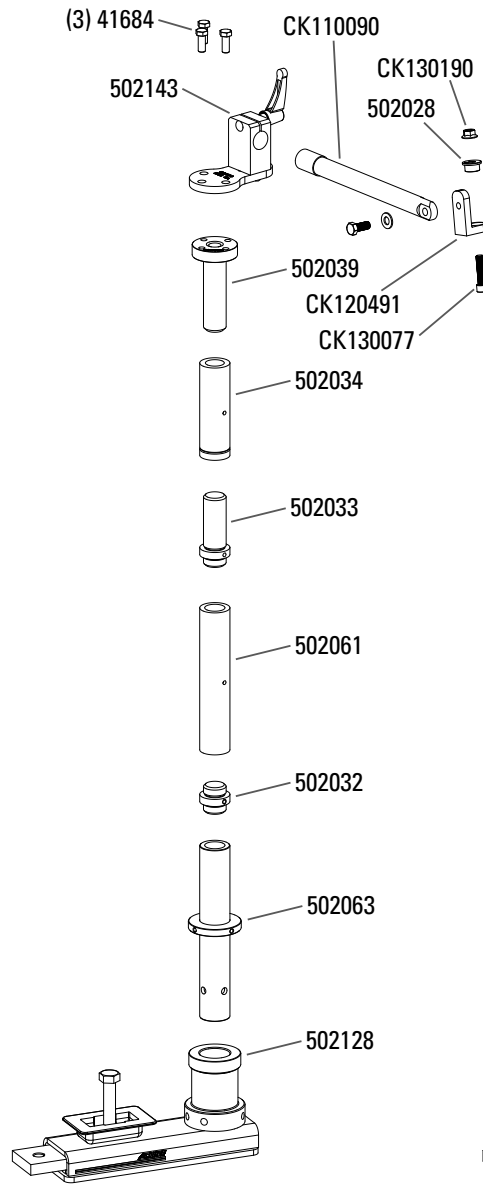
BIW Front and Rear Vehicle Strut Fixturing Locations



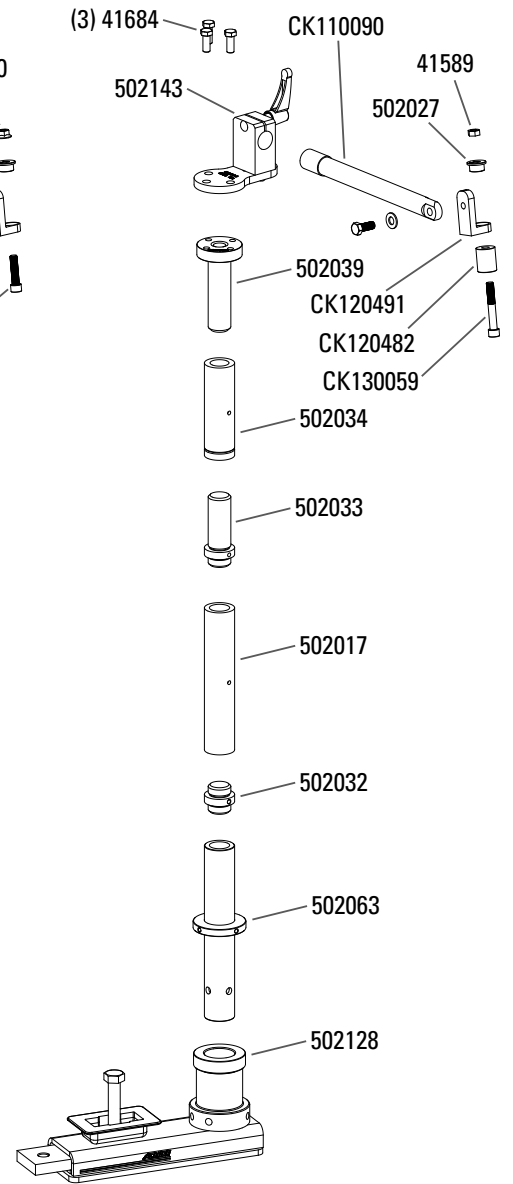
Fixture # 52, 53

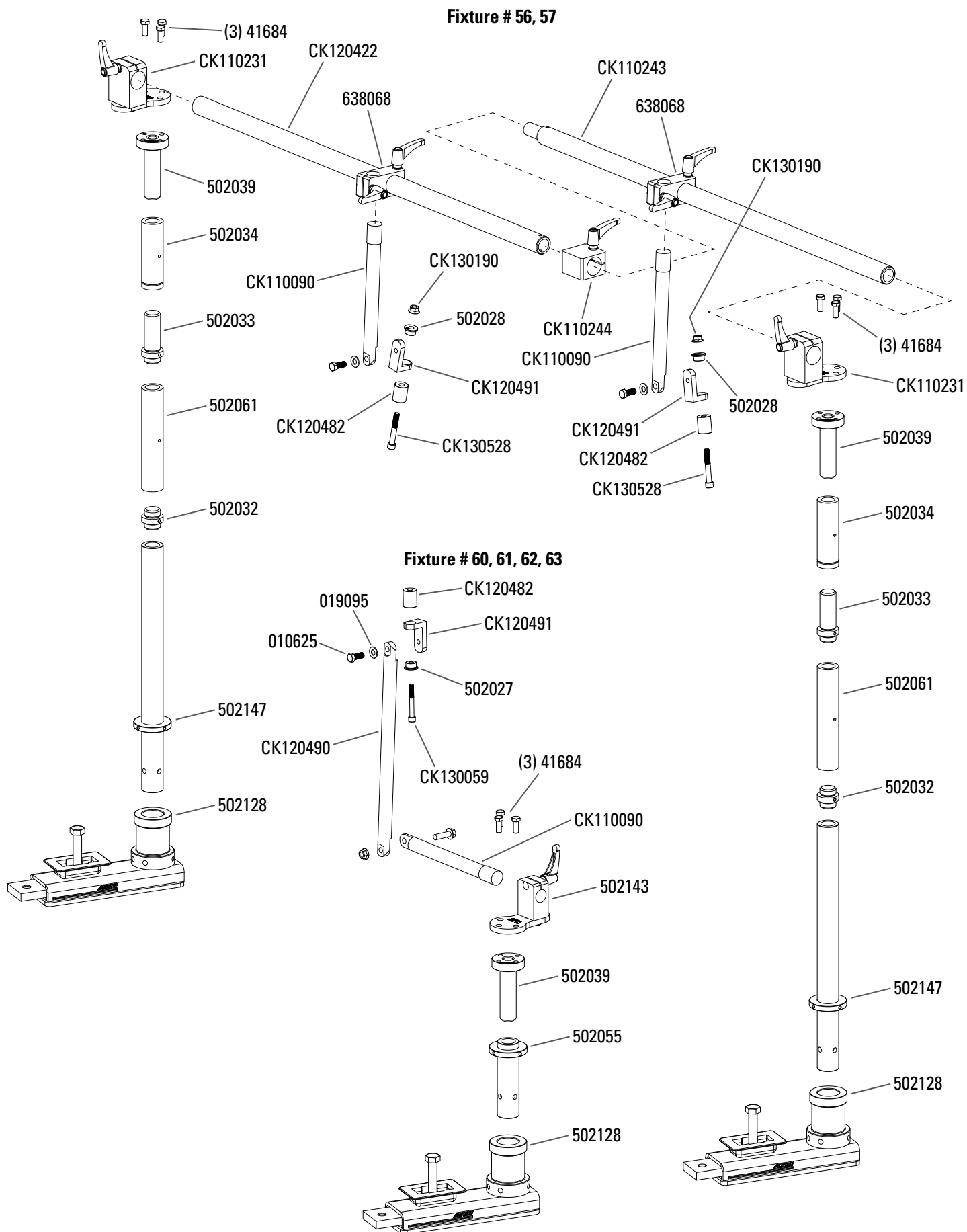


Fixture # 54, 55

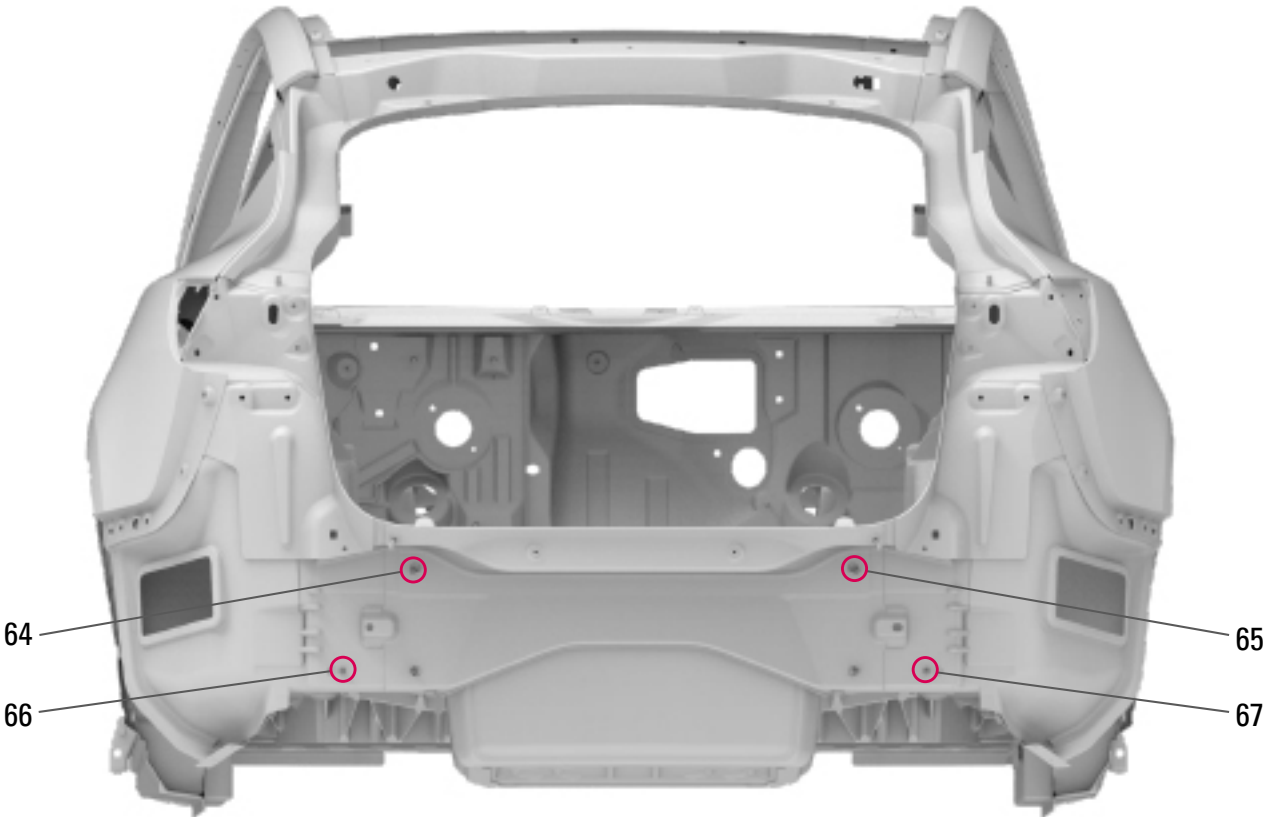


Fixture # 58, 59

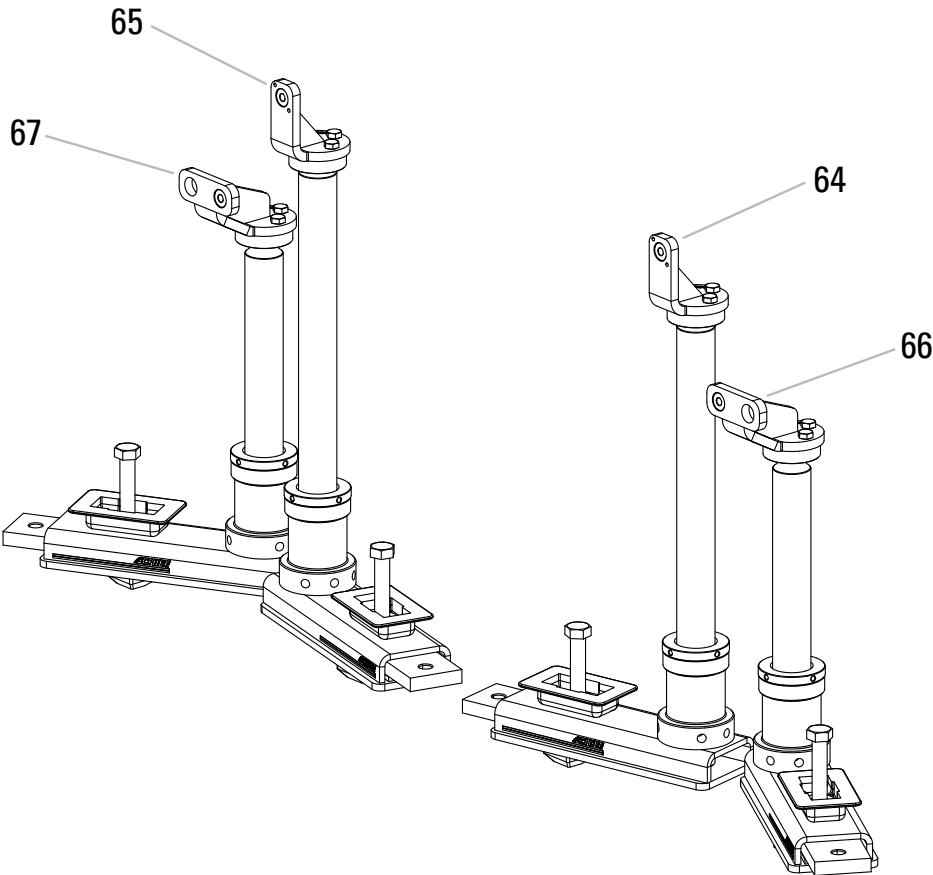




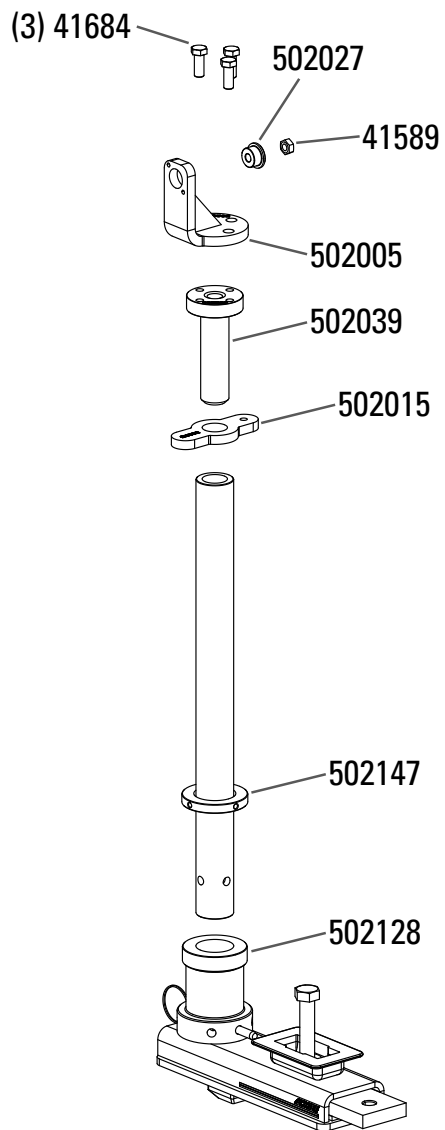
BIW Rearbody Fixture Locations - Mechanicals Out



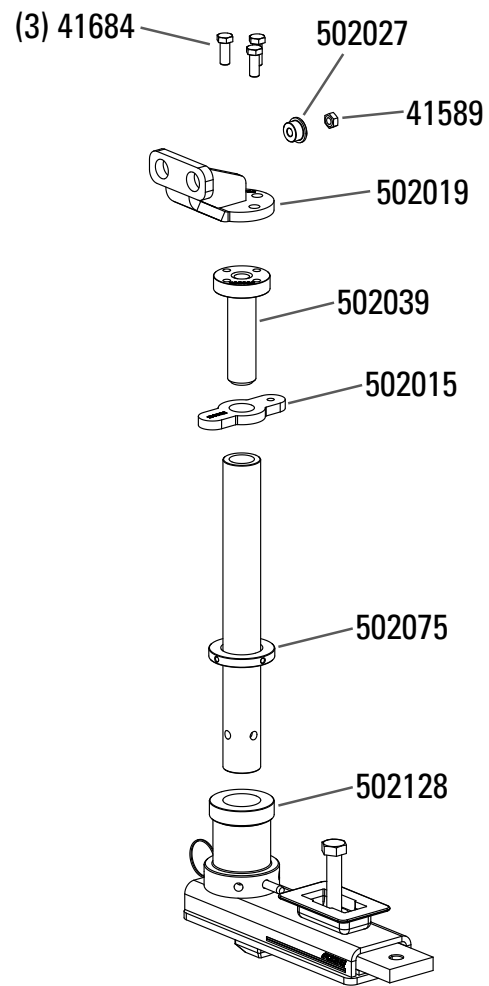
BIW Rearbody Vehicle Fixturing Locations



Fixture # 64, 65



Fixture # 66, 67



Notes

Notes

Notes



Everything you need for today's repairs and tomorrow's.

Call 800-445-9262 or visit us online at chieftechnology.com.



©2022 VEHICLE SERVICE GROUPSM

Printed in the U.S.A. All Rights Reserved. Unless otherwise indicated, CHIEF AUTOMOTIVE TECHNOLOGIES, VEHICLE SERVICE GROUPSM, DOVER and all other trademarks are property of the Dover Corporation and its affiliates. Chief Automotive Technologies reserves the right to alter product specifications and/or package components without notice, excluding changes to components subject to FCC & IC regulations.

CHIEF COLLISION TECHNOLOGY 8/22 Product specifications, part numbers, images and component descriptions are subject to change without notice or liability.