

KAHUNA

PARTS MANUAL



PARTS INFORMATION

To order replacement parts for the Chief Kahuna, contact an authorized representative of Chief Automotive Technologies, 308-384-9747.

When contacting Chief Automotive Technologies by telephone or mail, provide the following information: name, name of business, business telephone number, and business address. Additional information needed when ordering: description of part(s) and part number(s). Also include the model number for which the part is intended.

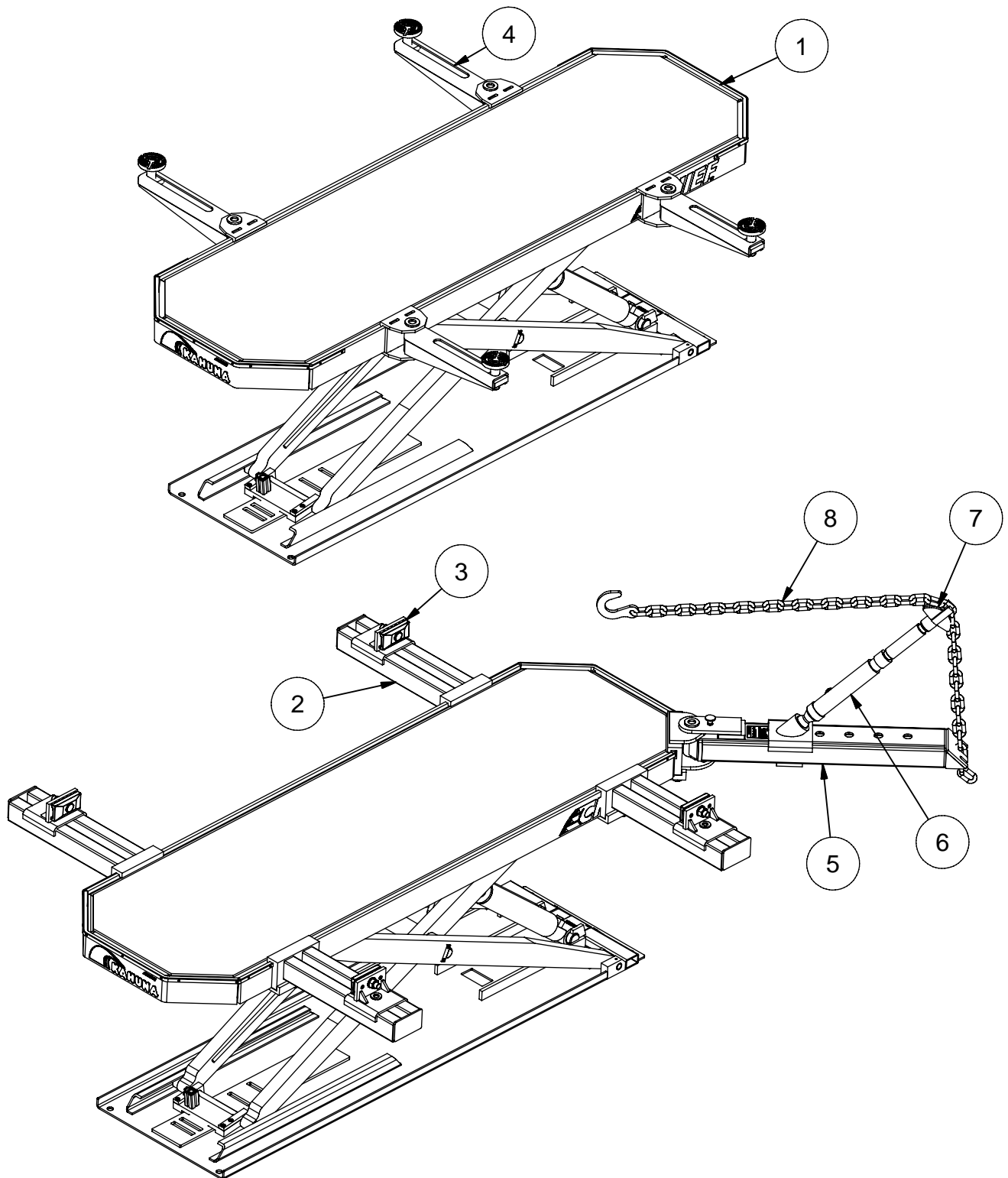
NOTE: Chief Automotive Technologies reserves the right to alter product specifications and/or package components without notice.

CAUTION: Always use Chief Automotive Technologies authorized replacement parts with the Chief Kahuna.

CHIEF'S LIMITED ONE-YEAR WARRANTY & LIABILITY

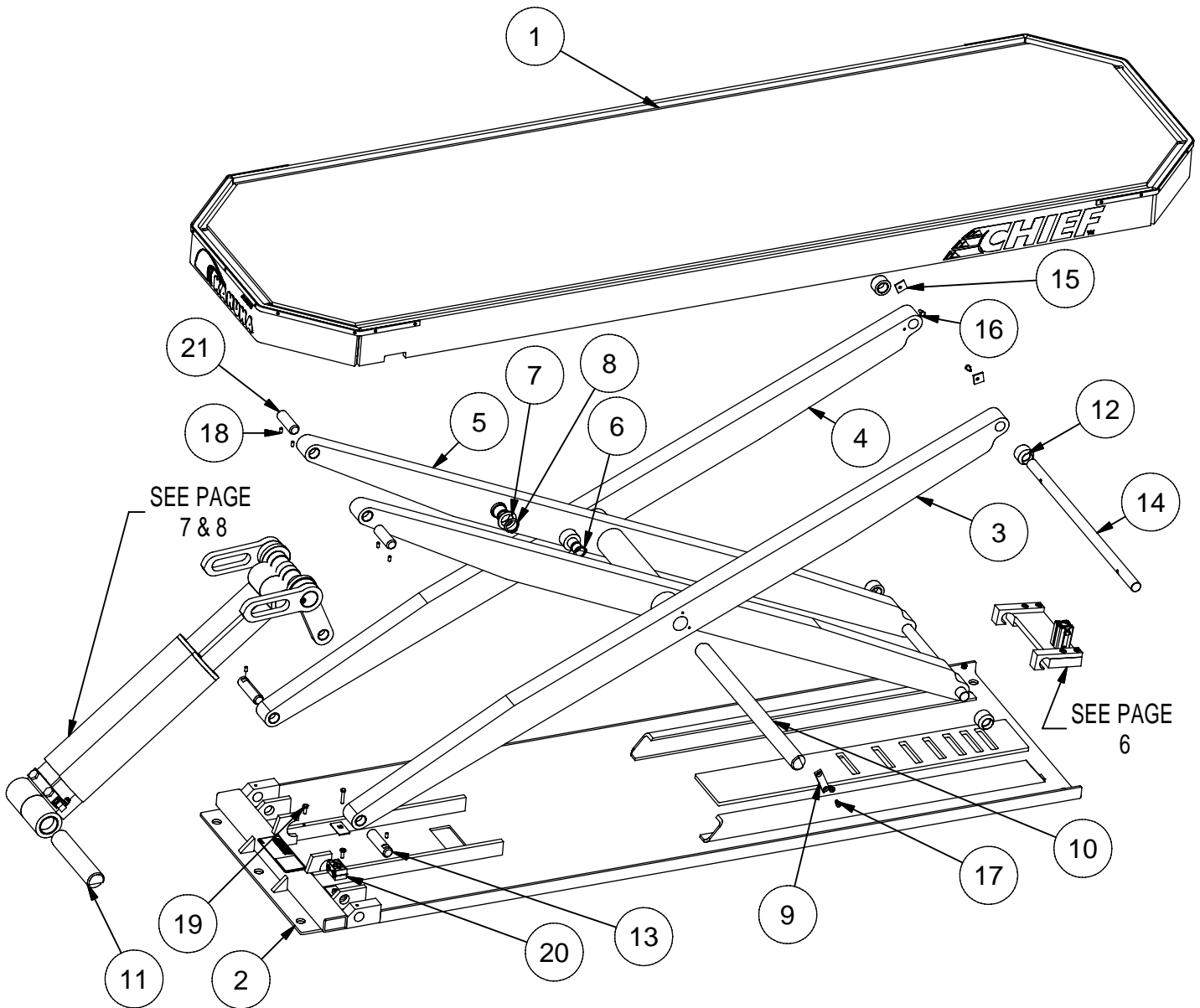
Chief Automotive Technologies warrants for one year from date of installation and/or purchase any of its products which do not perform satisfactorily due to defect caused by faulty material or workmanship. Chief's obligation under this warranty is limited to the repair or replacement of products which are defective and which have not been misused, carelessly handled, or defaced by repair or repairs made or attempted by others.

CHIEF AUTOMOTIVE TECHNOLOGIES DOES NOT ASSUME RESPONSIBILITY FOR ANY DEATH, INJURY OR PROPERTY DAMAGE RESULTING FROM THE OPERATOR'S NEGLIGENCE OR MISUSE OF THIS PRODUCT OR ITS ATTACHMENTS. CHIEF MAKES NO WRITTEN, EXPRESS OR IMPLIED WARRANTY WHATSOEVER OF MERCHANTABILITY OR FITNESS FOR A PARTICULAR PURPOSE OR OTHERWISE REGARDING THE EQUIPMENT OR ANY PART OF THE PRODUCT OTHER THAN THE LIMITED ONE-YEAR WARRANTY STATED ABOVE.



Parts List		
ITEM	P/N	DESCRIPTION
1	555000	KAHUNA, LIFT, BASIC, W/O ACCESSORIES
2	555120	ANCHOR ARM ASSEMBLY
3	555455	Anchoring Clamp Assembly, Basic, Kahuna
4	555155	LIFT PAD ARM ASSEMBLY
5	555350	VECTOR PULLING ARM ASSEMBLY
6	555025	VECTOR PULLING PARTS PACKAGE
7	555020	ACCESSORY PACKAGE, VECTOR PULLING
8	602861	Chain, Tie-Down, 3/8"

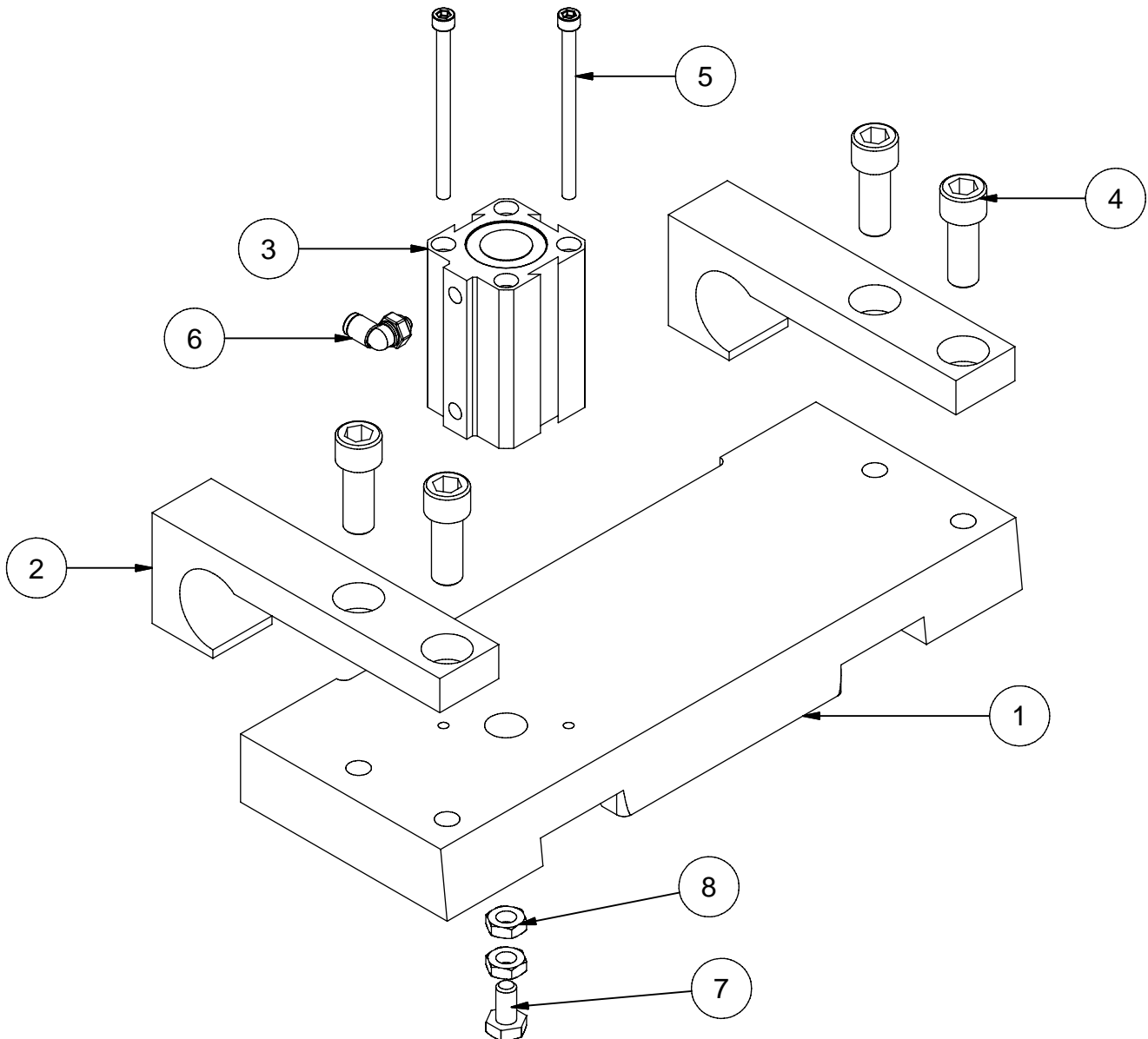
KAHUNA LIFT BASIC - 555000



KAHUNA LIFT BASIC - 555000

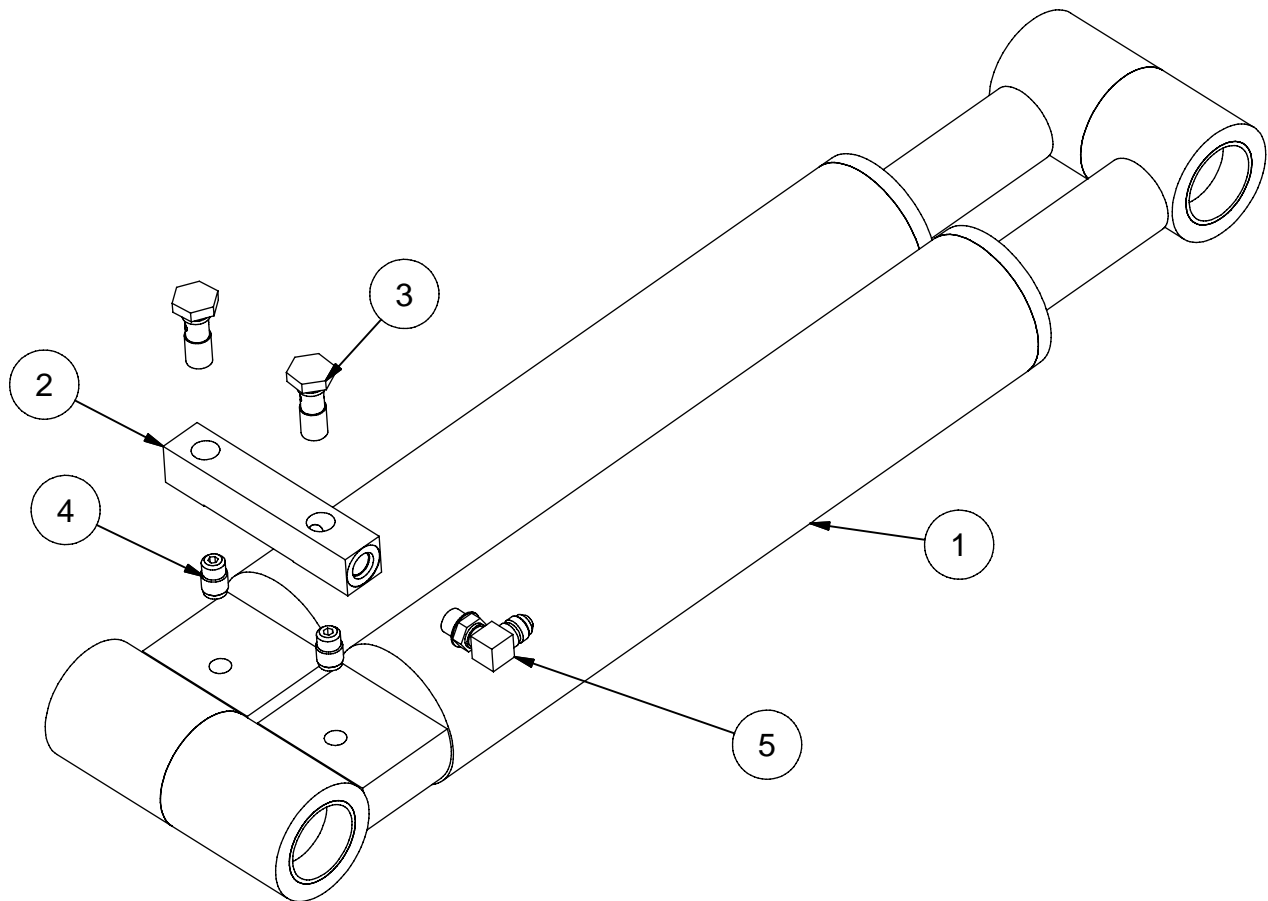
Parts List		
ITEM	P/N	DESCRIPTION
1	555100	LIFT TABLE TOP, WELDMENT
2	555240	KAHUNA SCISSOR BASE
3	555210	LCS SCISSOR LEG ASSEMBLY (OUTSIDE LEFT)
4	555220	LCS SCISSOR LEG ASSEMBLY (OUTSIDE RIGHT)
5	555230	LCS SCISSOR LEG ASSEMBLY (INSIDE)
6	770105	HD Retaining Ring
7	707487	Washer, Flat - 1.25"IDx1.875"ODx14GA-plated
8	693468	Snap Ring, HD for 1 1/4" shaft
9	555224	CENTER PIN STOP
10	555221	SCISSOR CENTER PIN
11	555231	CYLINDER PIN
12	555280	ROLLER ASEMBLY
13	555233	PIVOT PIN
14	555234	ROLLER AXLE
15	555235	AXLE STOP
16	706265	Bolt, 1/4-20NC x 1/2" Grade 2 Plated
17	555157	BOLT, 1/4" x 5/8" FHSHS, ZINC PLATED
18	555175	Screw, 1/4-20NC x 1/2" LG, Socket Set
19	706409	Bolt, 1/4-20NC x 3/4" Gr2 Plated
20	450493	Assembly, Twin Series Weld Clamp
21	555242	PIVOT PIN, UPPER, PLATED

KAHUNA LOCK ASSEMBLY



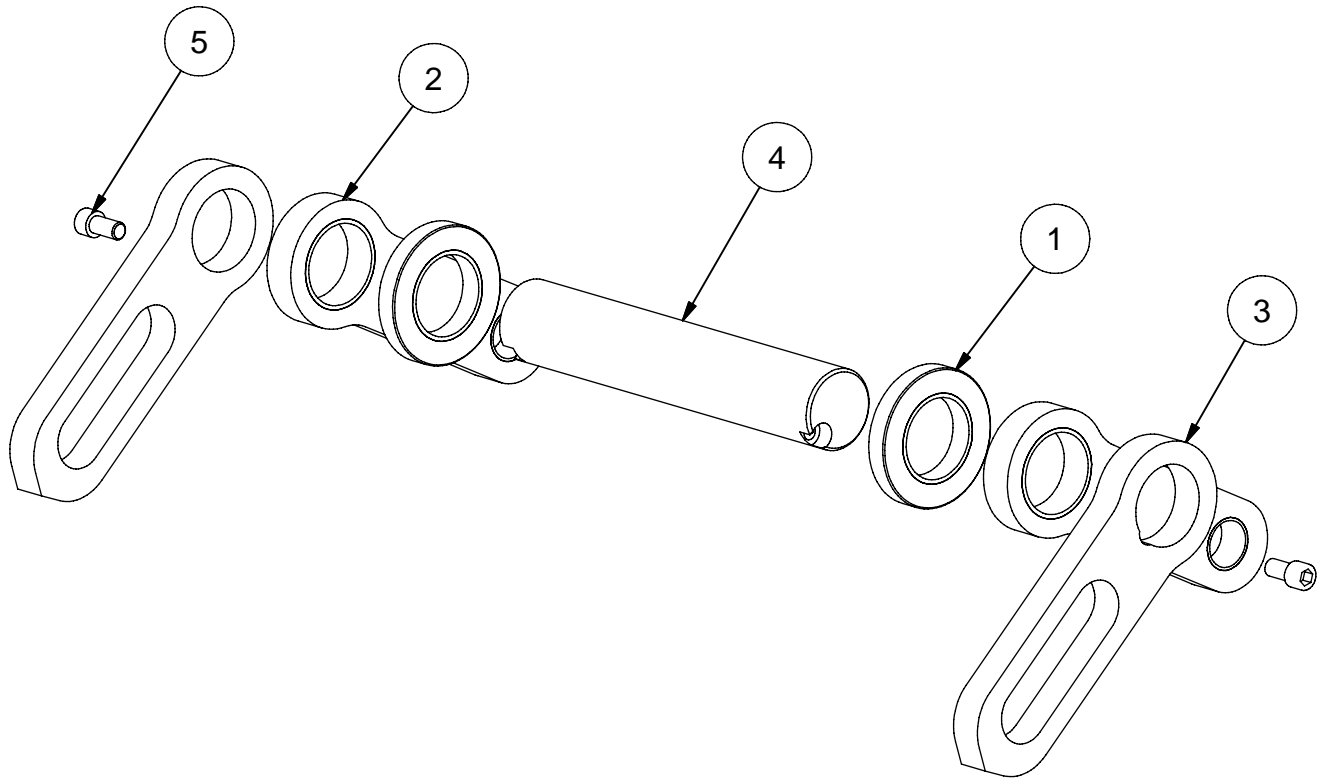
Parts List		
ITEM	P/N	DESCRIPTION
1	555217	LOCK ARM
2	555218	LOCK ARM HOOK
3	555245	AIR CYCLINDER
4	450195	Screw, 3/8-16NC x 1.00" Socket Head Cap
5	555239	BOLT, #8-32 x 2.5"Lg, SHCS
6	305797	Fitting, 10-32 Microlok, 90 dg
7	555241	Bolt, 1/4"-28 NC x 1/2" Gr2 Plated
8	450868	Nut, 1/4-28 UNF Hex Jam

KAHUNA LIFT CYLINDER ASSEMBLY



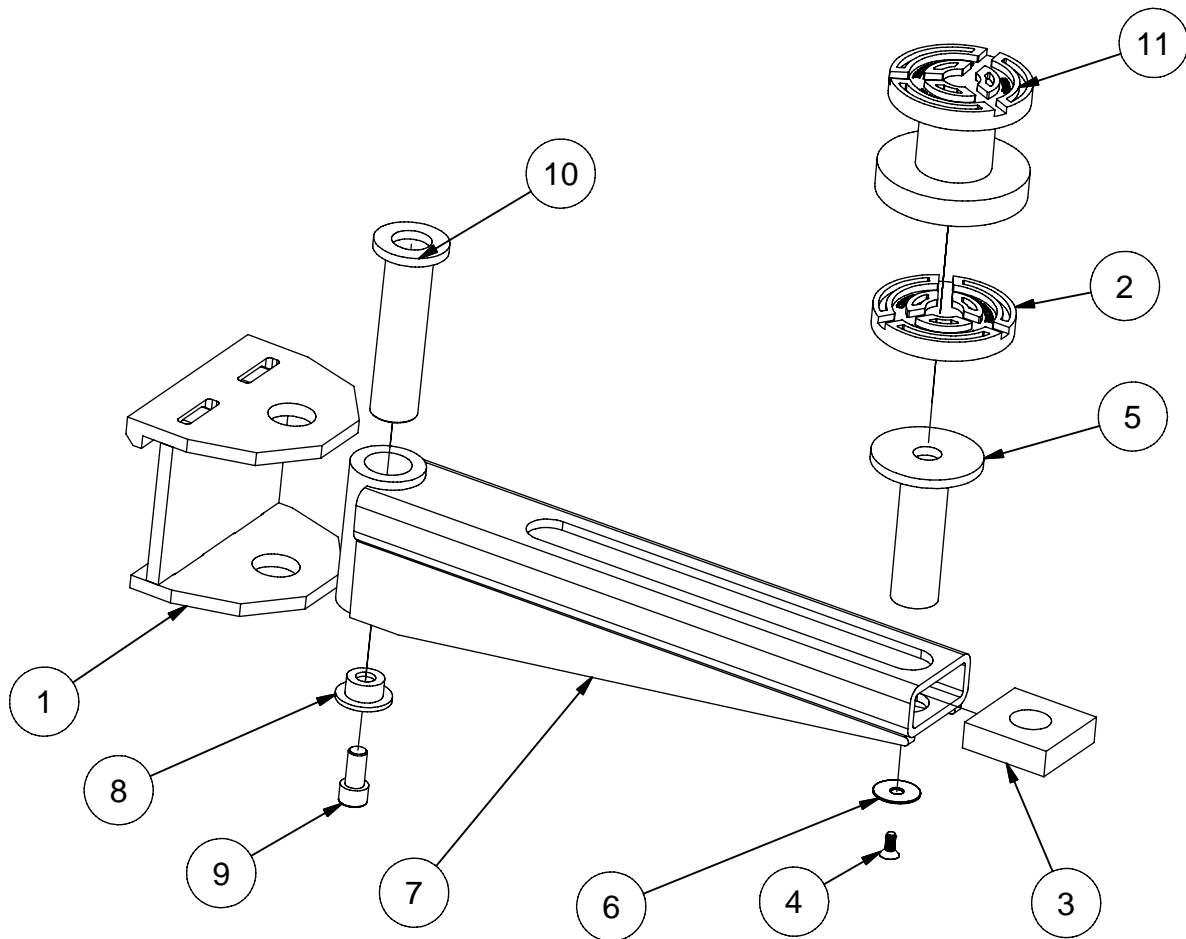
Parts List		
ITEM	P/N	DESCRIPTION
1	555290	LIFT CYLINDER PAINTED W/BEARINGS
2	555294	KAHUNA CYLINDER MANIFOLD
3	555295	KAHUNA CYLINDER MANIFOLD FITTING
4	450990	Flow Control, .5 GPM Pressure Compensated
5	305720	Fitting, Hyd #6MBX - #6MJ

KAHUNA LIFT LINKAGE ASSEMBLY



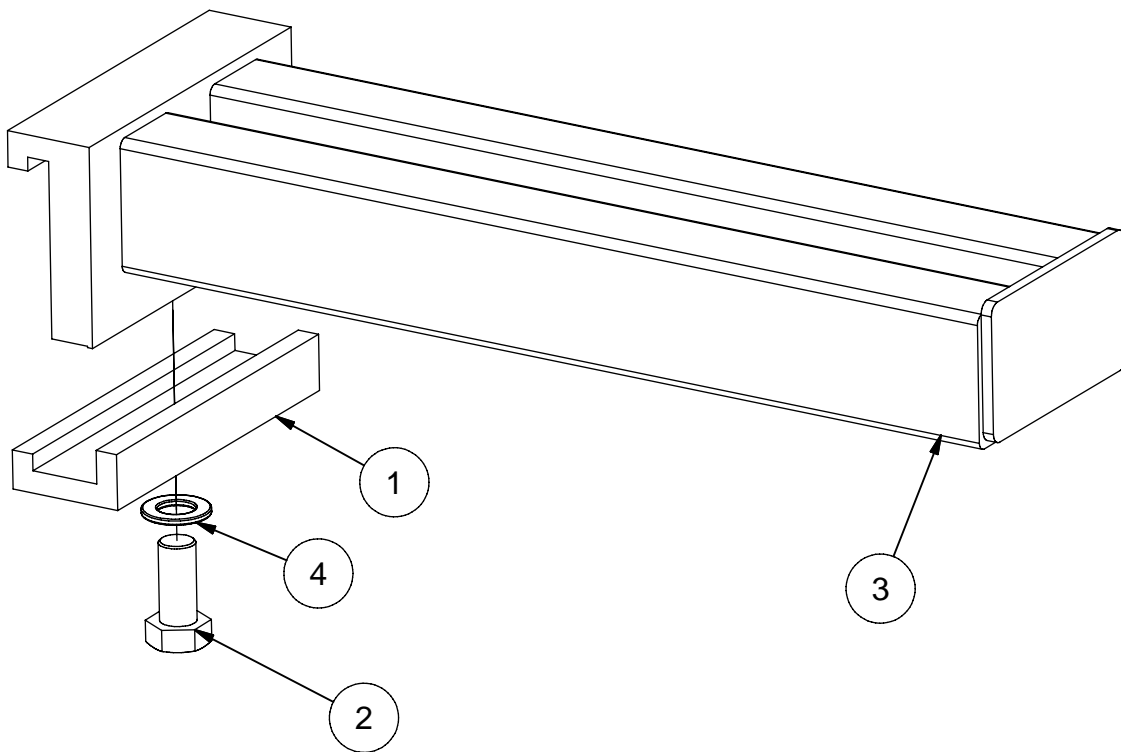
Parts List		
ITEM	P/N	DESCRIPTION
1	555270	LINKAGE ROLLER ASEMBLY
2	555206	LCS PIVOT LIFT LINK W/BUSHINGS
3	555205	LCS SLIDE LIFT LINK
4	555219	SCISSOR LINKAGE PIN
5	555178	Screw, 3/8-16NC x .750" Socket Head Cap

LIFT PAD ARM ASSEMBLY - 555155



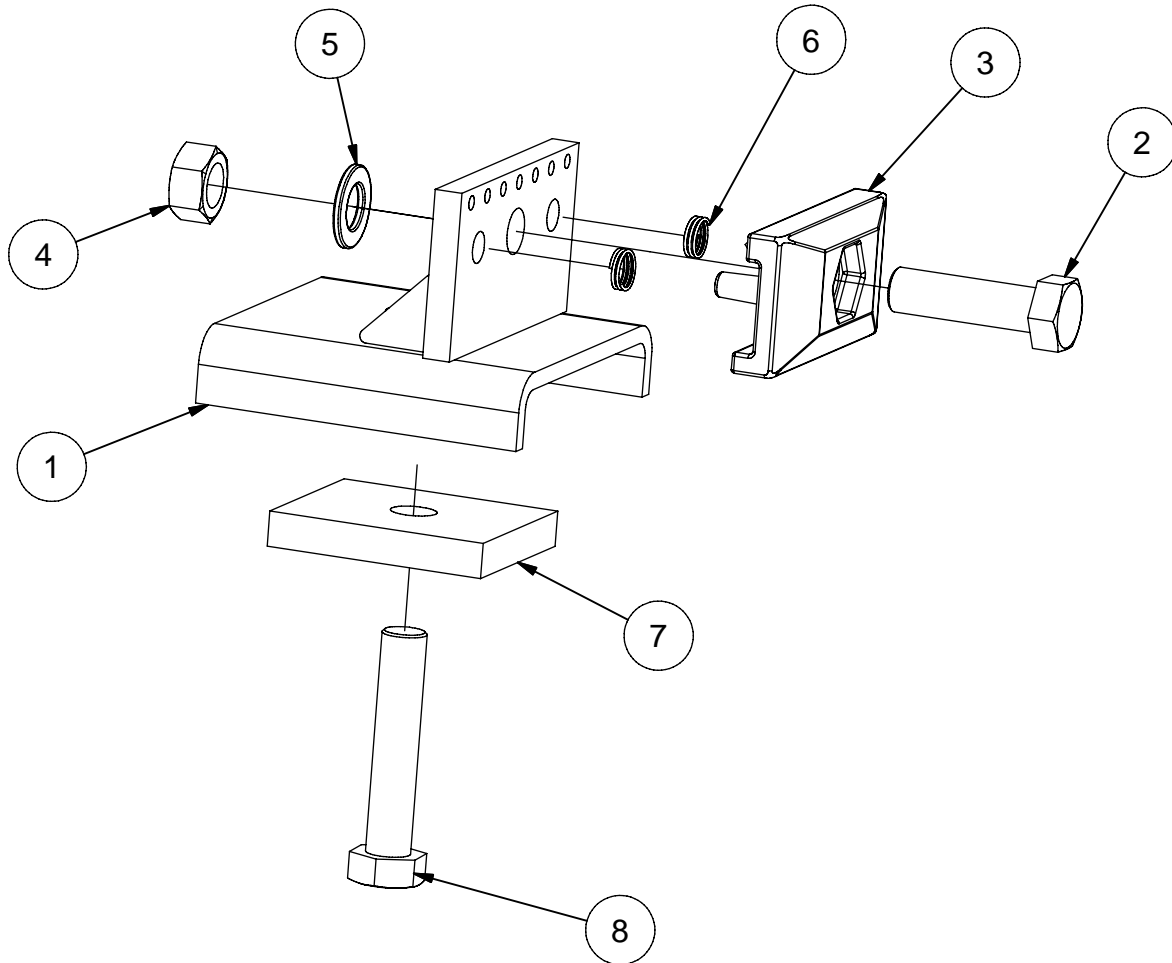
Parts List		
ITEM	P/N	DESCRIPTION
1	555140	LIFT ARM WELDMENT ASSEMBLY BASE
2	555146	LIFT PAD, LIFT SUPPORT ARM
3	555169	SQUARE SLIDE BLOCK, LIFT SUPPORT ARM
4	555157	BOLT, 1/4" x 5/8" FHS, ZINC PLATED
5	555154	THREADED LIFT PAD, LIFT SUPPORT
6	555156	WASHER, FLAT .344 ID X 1.25" OD X .052 THK, ZP
7	555153	LIFT ARM WELDMENT ASSEMBLY
8	555114	LIFT PIN CAP
9	010624	Screw, 1/2-13 UNC x 1.00" Socket Head Cap
10	555158	LIFT PAD ARM PIVOT PIN
11	555400	KAHUNA LIFT PAD EXTENSION

ANCHOR ARM ASSEMBLY - 555120



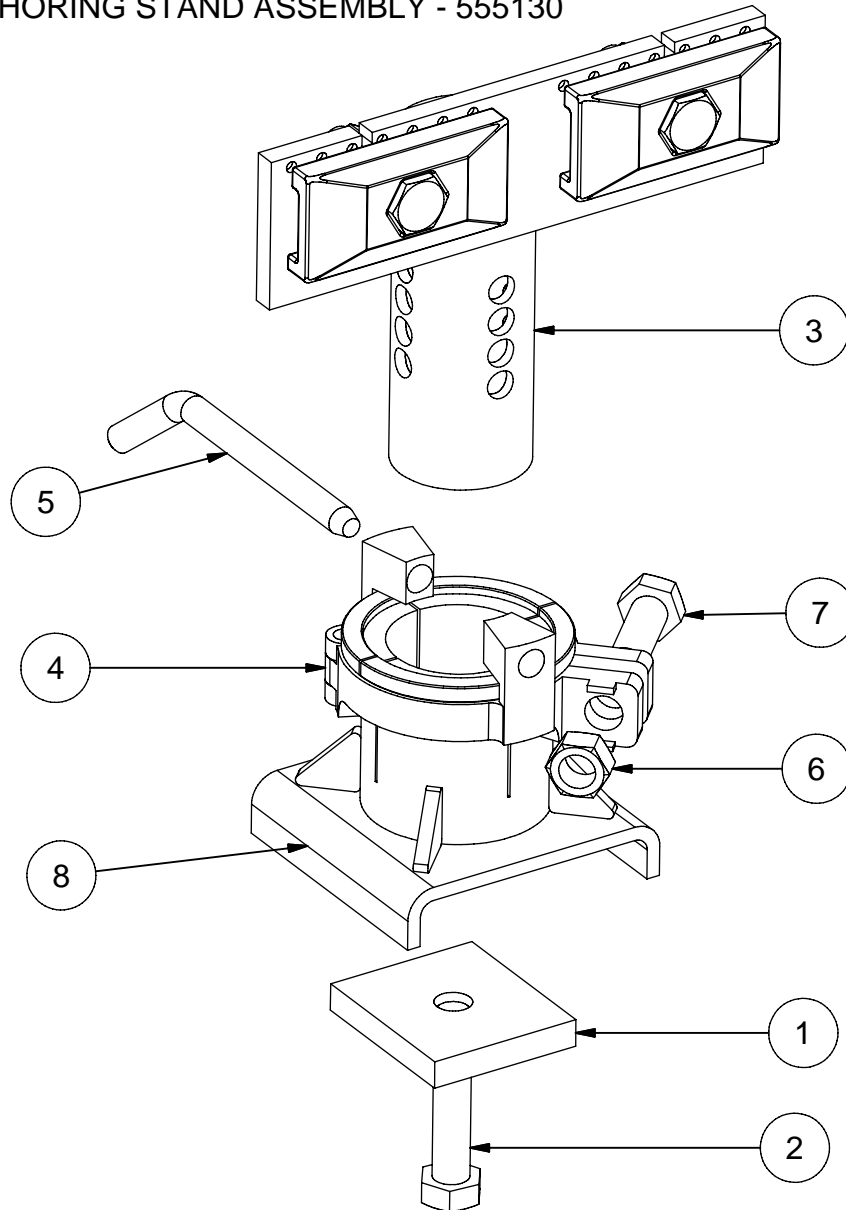
Parts List		
ITEM	P/N	DESCRIPTION
1	555122	ANCHOR ARM JAW, W/HOLE
2	539005	Bolt, M20 x 2.5 x 40 Hex
3	555125	ANCHOR ARM WELDMENT ASSY.
4	601738	Washer, 3/4 Flat

BASIC ANCHORING ASSEMBLY - 555455



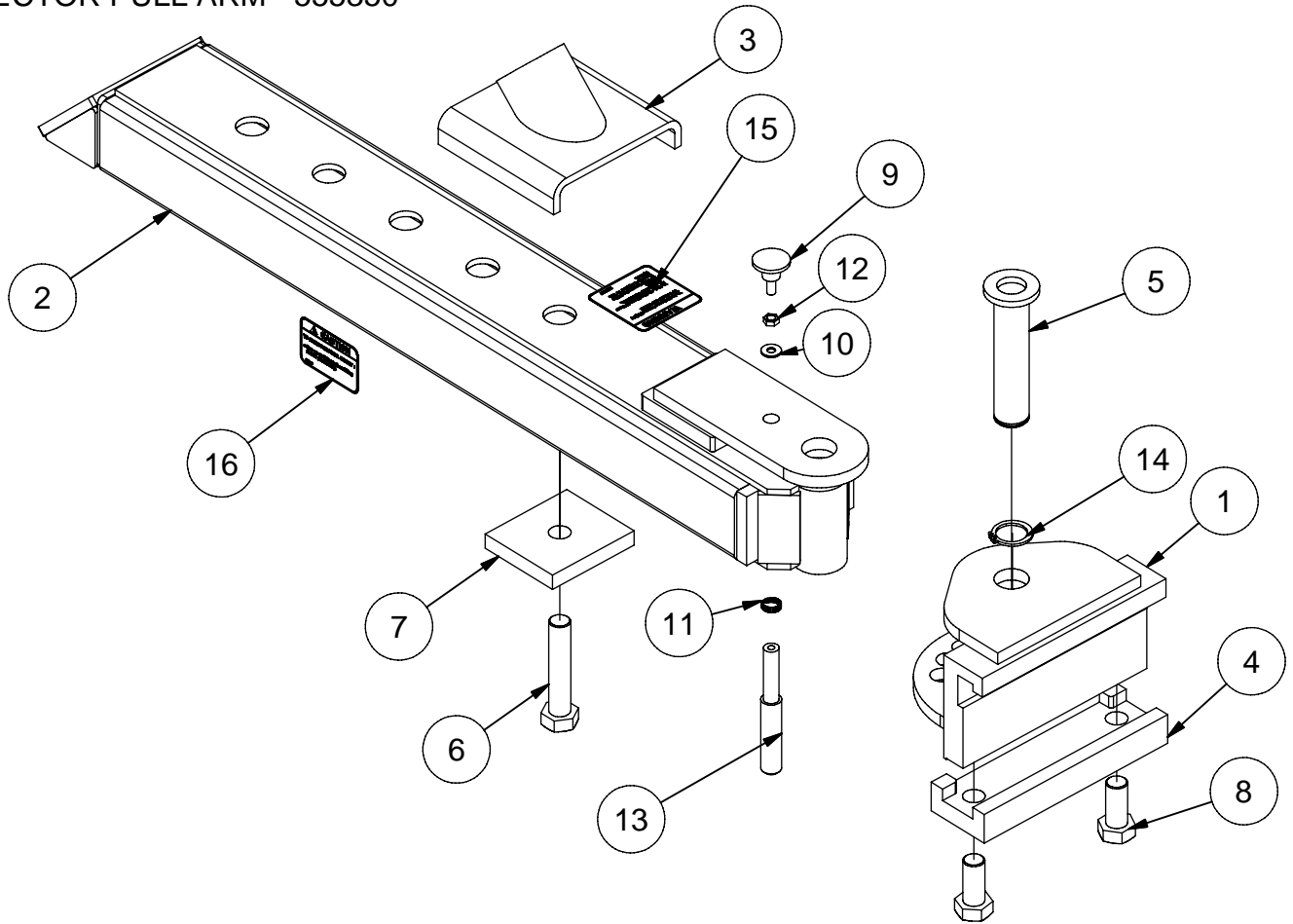
Parts List		
ITEM	P/N	DESCRIPTION
1	555450	Anchoing Base Weldment, Basic
2	401231	Bolt, M20 x 2.5 x 70 Hex
3	498110	PINCH JAW W/NAILS COMPLETE
4	539016	Nut, M20 x 2.5 Hex
5	601738	Washer, 3/4 Flat
6	092110	Spring, Compression, .720 x 1
7	682953	Plate, EZ-Liner Tie Bolt
8	539015	Bolt, M20 x 2.5 x 110 Hex

OPTIONAL ANCHORING STAND ASSEMBLY - 555130



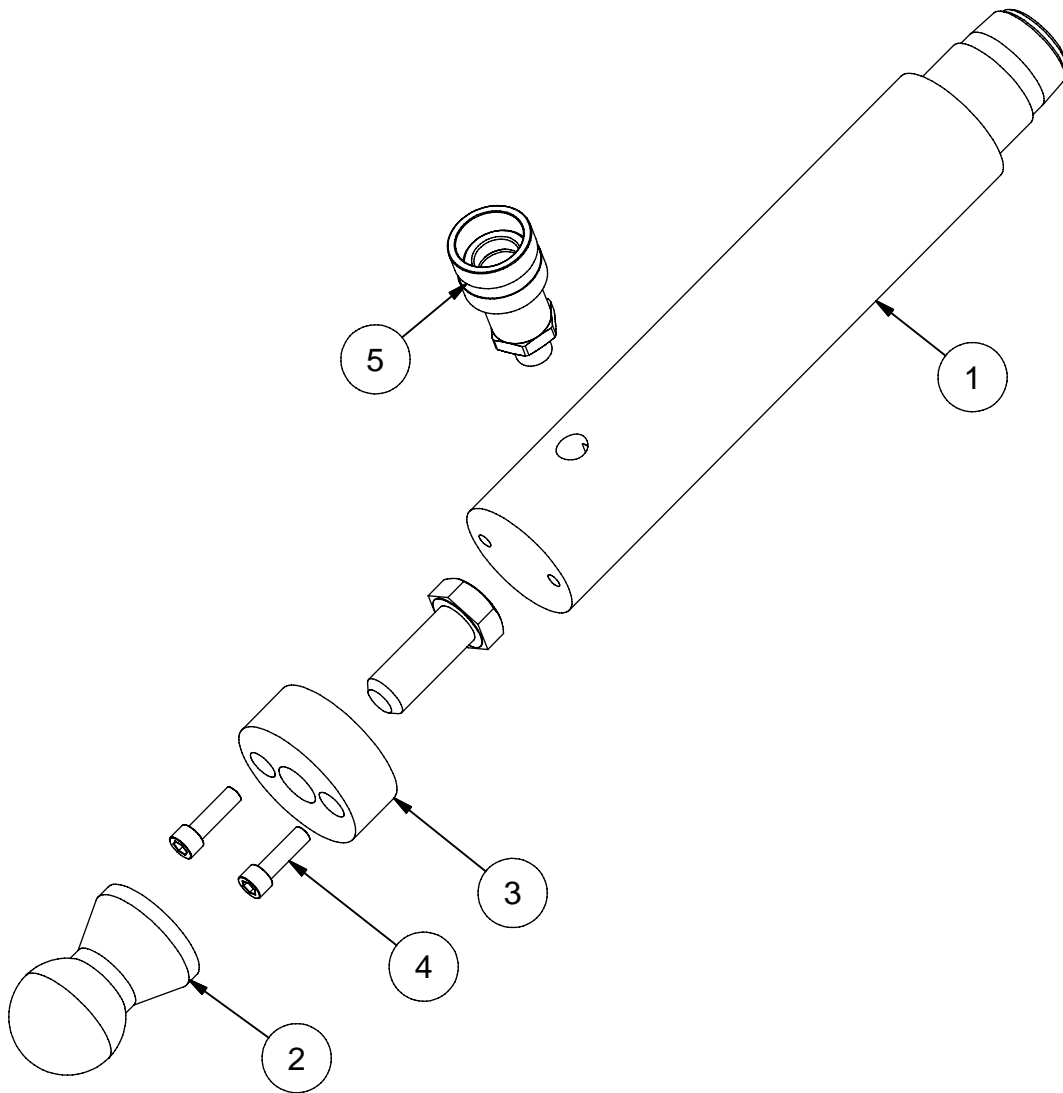
Parts List		
ITEM	P/N	DESCRIPTION
1	682953	Plate, EZ-Liner Tie Bolt
2	539015	Bolt, M20 x 2.5 x 110 Hex
3	509000	UMS ADAPTER TUBE, METRIC, SINGLE
4	607381	Locking Collar Assembly
5	606686	HEIGHT ADJUSTING PIN, UAS, PLATED
6	539016	Nut, M20 x 2.5 Hex
7	539006	Bolt, M20 x 2.5 x 60 Hex
8	555132	ANCHOR BASE WELDMENT, SADDLE

VECTOR PULL ARM - 555350



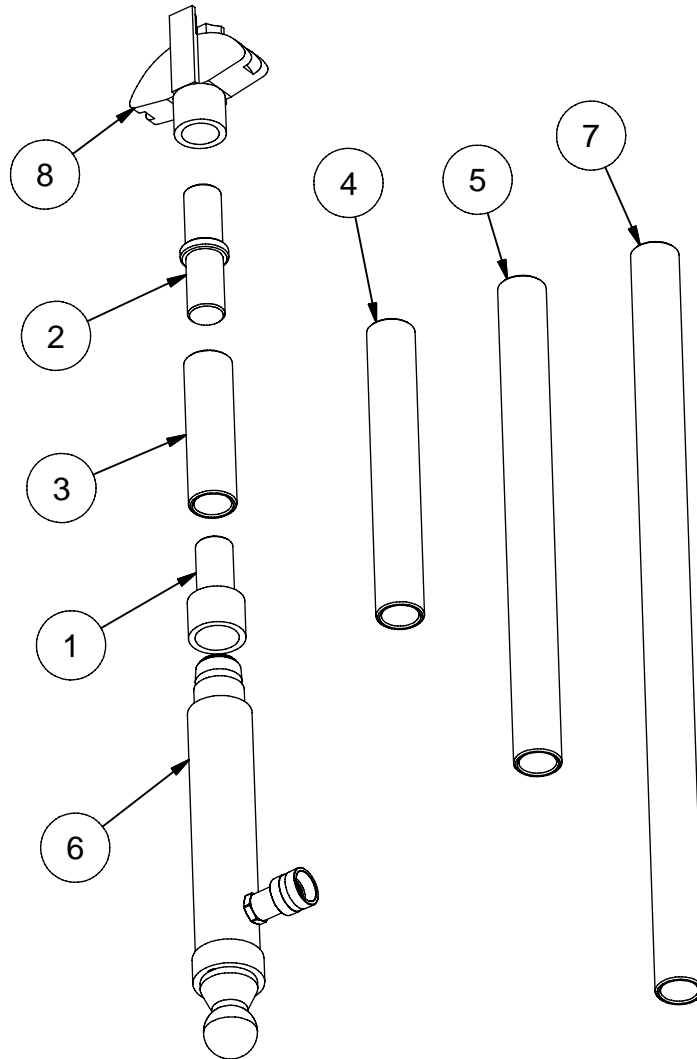
Parts List		
ITEM	P/N	DESCRIPTION
1	555300	VECTOR PULL ARM PIVOT HOOK
2	555167	PULLING ARM WELDMENT
3	555170	VECTOR PULLING BASE, WELDMENT
4	555128	ANCHOR ARM JAW, W/HOLE
5	555335	VECTOR PULL ARM PIN
6	539015	Bolt, M20 x 2.5 x 110 Hex
7	682953	Plate, EZ-Liner Tie Bolt
8	539005	Bolt, M20 x 2.5 x 40 Hex
9	401479	Knob, Push-Pull, DK-52
10	401481	Washer, 1/4" Serkies W Plated
11	092110	Spring, Compression, .720 x 1
12	629714	Nut, 5/16-18 UNC, Plated
13	555346	Pin, 3/4" Dia.,Kahuna Vector Arm
14	693468	Snap Ring, HD for 1 1/4" shaft
15	693337	Label, Warning, Do Not Position Yourself
16	692145	Label, Caution - USE AN ASSISTANT WHEN LIFTING

PULLING RAM ASSEMBLY - 555180



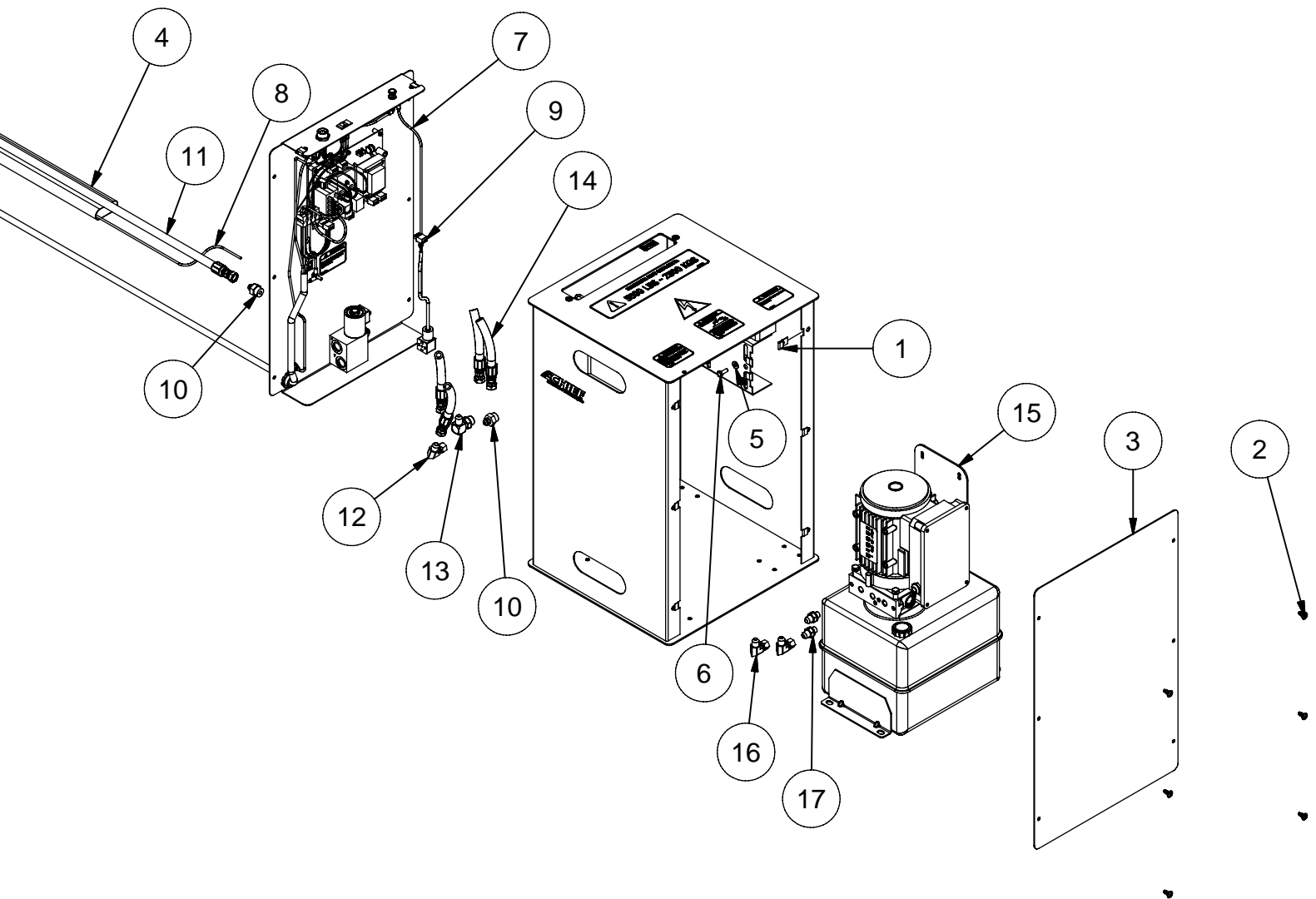
Parts List		
ITEM	P/N	DESCRIPTION
1	555185	Ram, Auxiliary, (6.125" Stroke), 7.5 Ton
2	555173	PIVOT ADAPTER, W/BOLT
3	555174	PIVOT ADAPTER COLLAR
4	555184	5/16-18 X 1" LONG SHCS
5	604939	QUICK COUPLER,FEMALE,WITH MALE THREAD

VECTOR PULLING ACCESSORY PACKAGE - 555020



Parts List		
ITEM	P/N	DESCRIPTION
1	601826	Coupling, Auxiliary, Female, 10-Ton
2	601834	Coupling, Auxiliary Extension, 10-To
3	601842	Extension, Auxiliary 6" 10 Ton
4	601850	Extension, Auxiliary 12" 10 Ton
5	601869	Extension, Auxiliary 20" 10 Ton
6	555180	PULLING RAM ASSEMBLY
7	601922	Extension, Auxiliary 31" 10 Ton
8	604630	Auxiliary Pulling Head, Cast

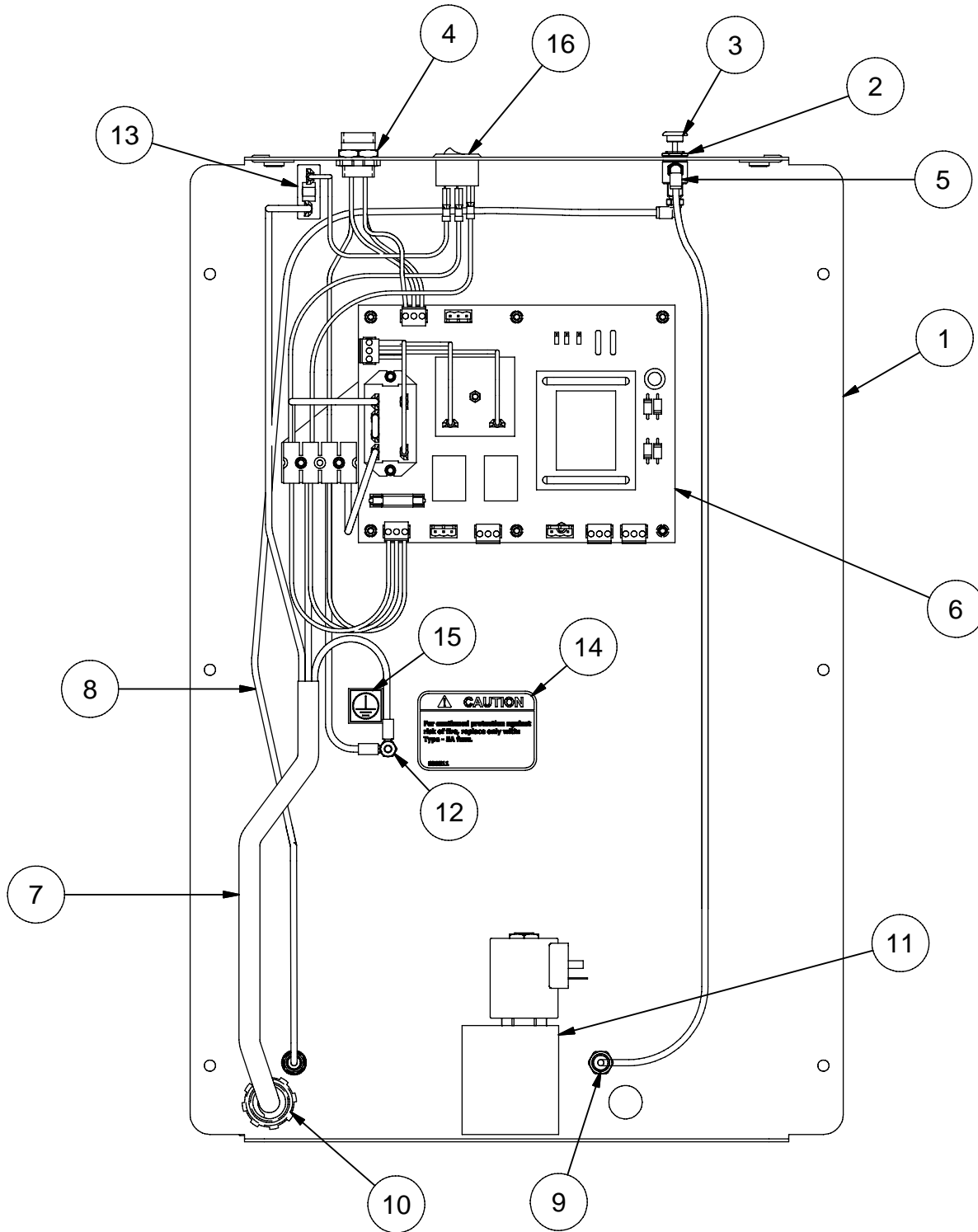
KAHUNA PUMP CABINET - 555315



KAHUNA PUMP CABINET - 555315

Parts List		
ITEM	P/N	DESCRIPTION
1	450453	Nut, 1/4-20 NC J Style Clip
2	450459	Screw, 1/4-20 x 3/4" Button Head Torx Plus
3	450466	Panel, E/VHT Pump Cabinet Front
4	450452	Hose Protector, eVHT Cabinet
5	707410	Washer, 1/4" Flat
6	706409	Bolt, 1/4-20NC x 3/4" Gr2 Plated
7	555345	Assembly, Rear Panel, KAHUNA Cabinet
8	305848	Tubing, 5/32" Soft Nylon Black
9	450977	Wire Harness, PCB to Coils
10	305752	Straight Adapter, 8MB-6MJ
11	555349	Hose, 218", KAHUNA LIFT
12	450935	Elbow Adapter, 6JICX to -6 JIC 90
13	450483	Adapter, -8 ORB to -6 JIC Swivel 90
14	450474	Hose, -6FJX to -6FJX x 30" Long x 3/8" ID
15	OS450451	Assembly, Oil Sistem eVHT Power Unit
16	450935	Elbow Adapter, 6 JICX FEM to -6 JIC MALE
17	687233	Adapter, 1/4 BSPP to -6 JIC

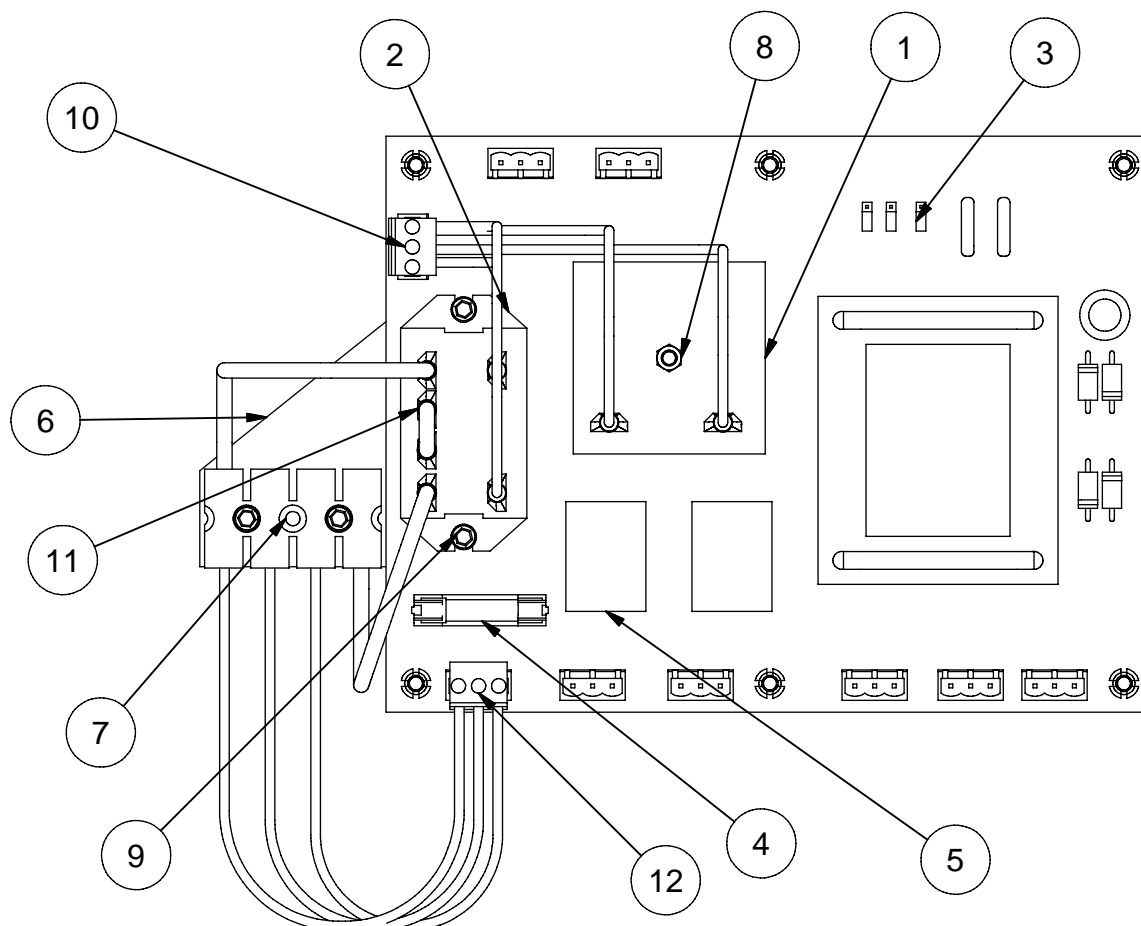
Kahuna Back Panel - 555345



Kahuna Back Panel - 555345

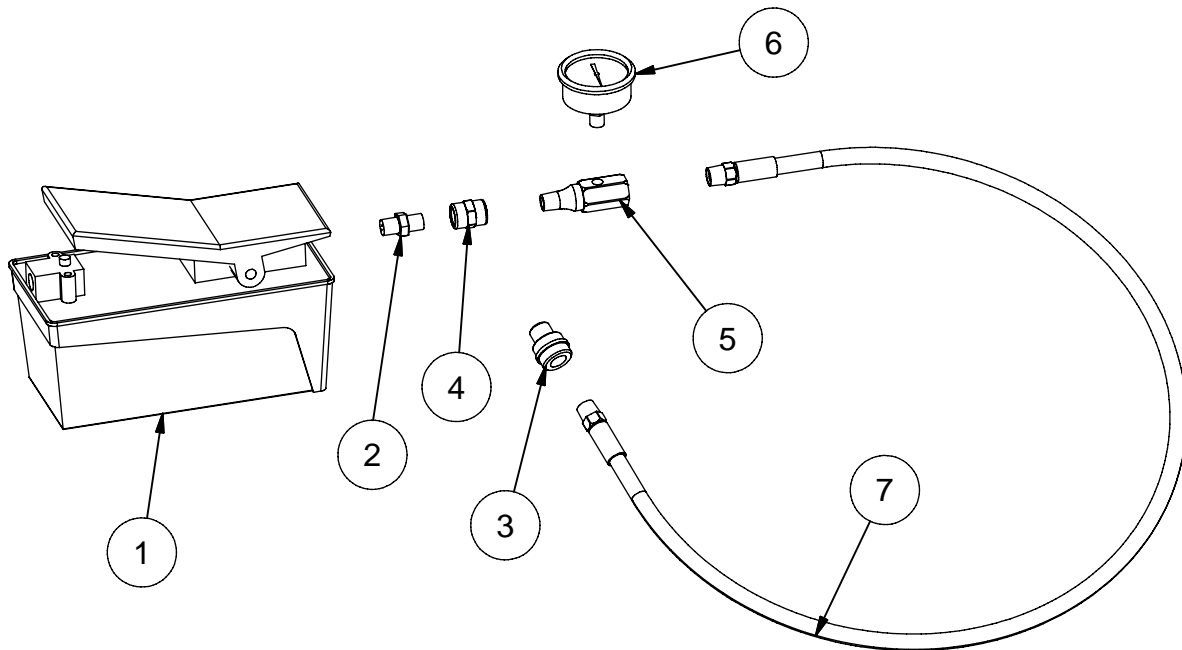
Parts List		
ITEM	P/N	DESCRIPTION
1	451231	Rear Panel, Goliath / Fuzion Cabinet
2	450883	Normally Closed 3-way Spool Valve
3	450889	BUTTON ACTUATOR / 1/8" STEM
4	620242	Pig-Tail, Female Mini-Line Cord
5	305797	Fitting, 10-32 Microlok, 90 dg
6	450952	Assembly, E/VHT Control Board
7	450989	Power Cord, 12-3 SOJ
8	305848	Tubing, 5/32" Soft Nylon Black
9	450951	Bulkhead Fitting, 5/32 PTL
10	692271	STRAIN RELIEF CONNECTOR, 3/4"
11	555348	Manifold Assembly, Kahuna Cabinet
12	796010	Nut, 10-24 Hex Plated
13	638270	Circuit Breaker, Pump Motor, 120V 25A
14	638511	Decal, Caution - Fuse Replacement
15	692004	Decal, Ground Symbol
16	555344	Switch, Rocker, Lighted

Kahuna Control Board - 450952



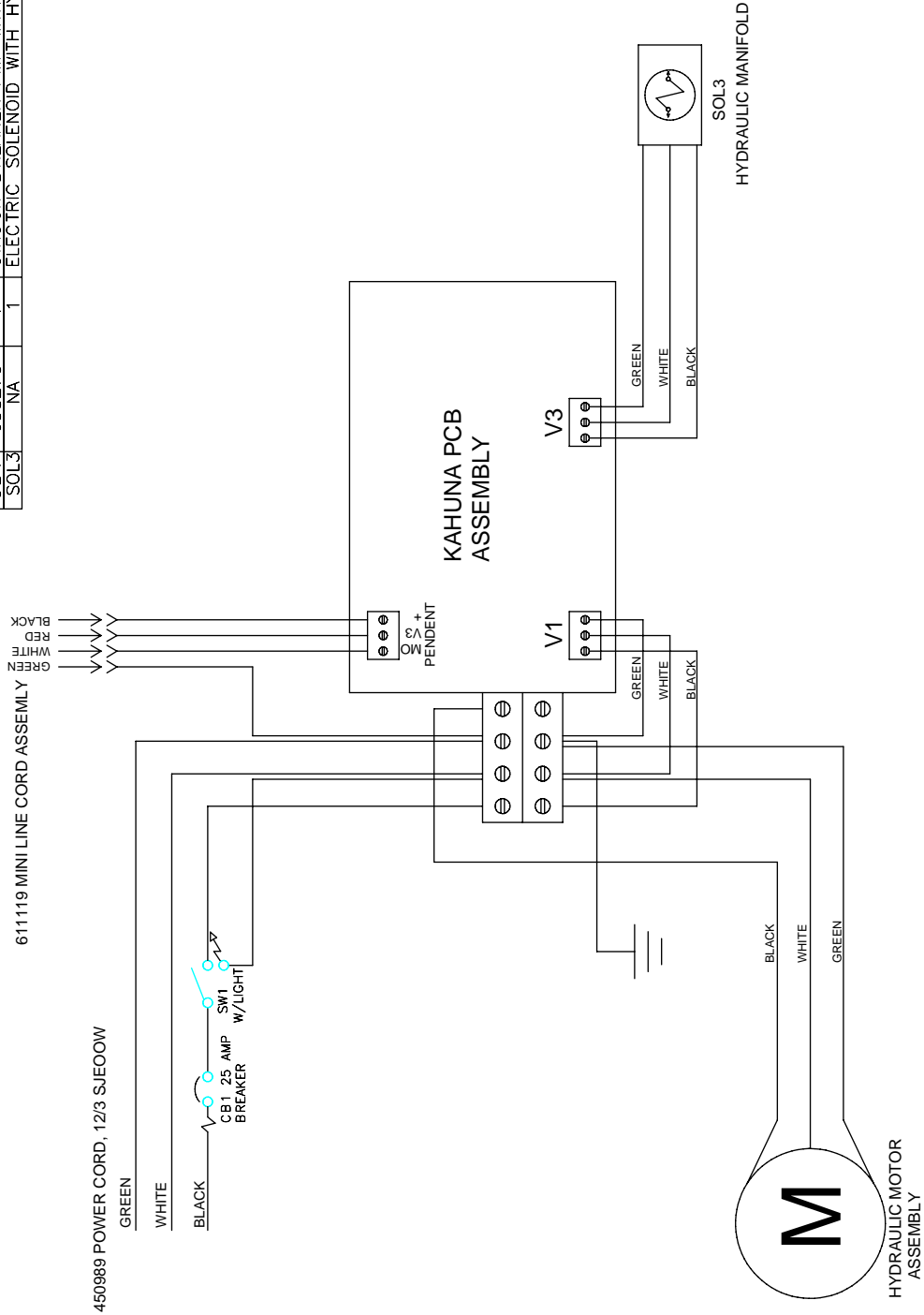
Parts List		
ITEM	P/N	DESCRIPTION
1	450458	Relay, Adjustable Time Delay .25 - 5 Second
2	450970	Motor Contactor, 24VDC
3	450974	SHUNT 2-POS .100\" JUMPER
4	794550	FUSE 5 AMP
5	450967	RELAY DPDT 24VDC
6	450975	BRACKET, TERMINAL BLOCK MOUNT
7	450976	TERMINAL BLOCK 4 POS
8	450957	Nut, #8-32 Nylock
9	450060	Screw, #8-32x1/4\" Socket Head Cap
10	450983	Wire Harness, PCB to Relay
11	450987	Wire, Power Relay Jumper
12	450978	Wire Harness, PCB to Power Block

Vector Pulling Parts - 555025

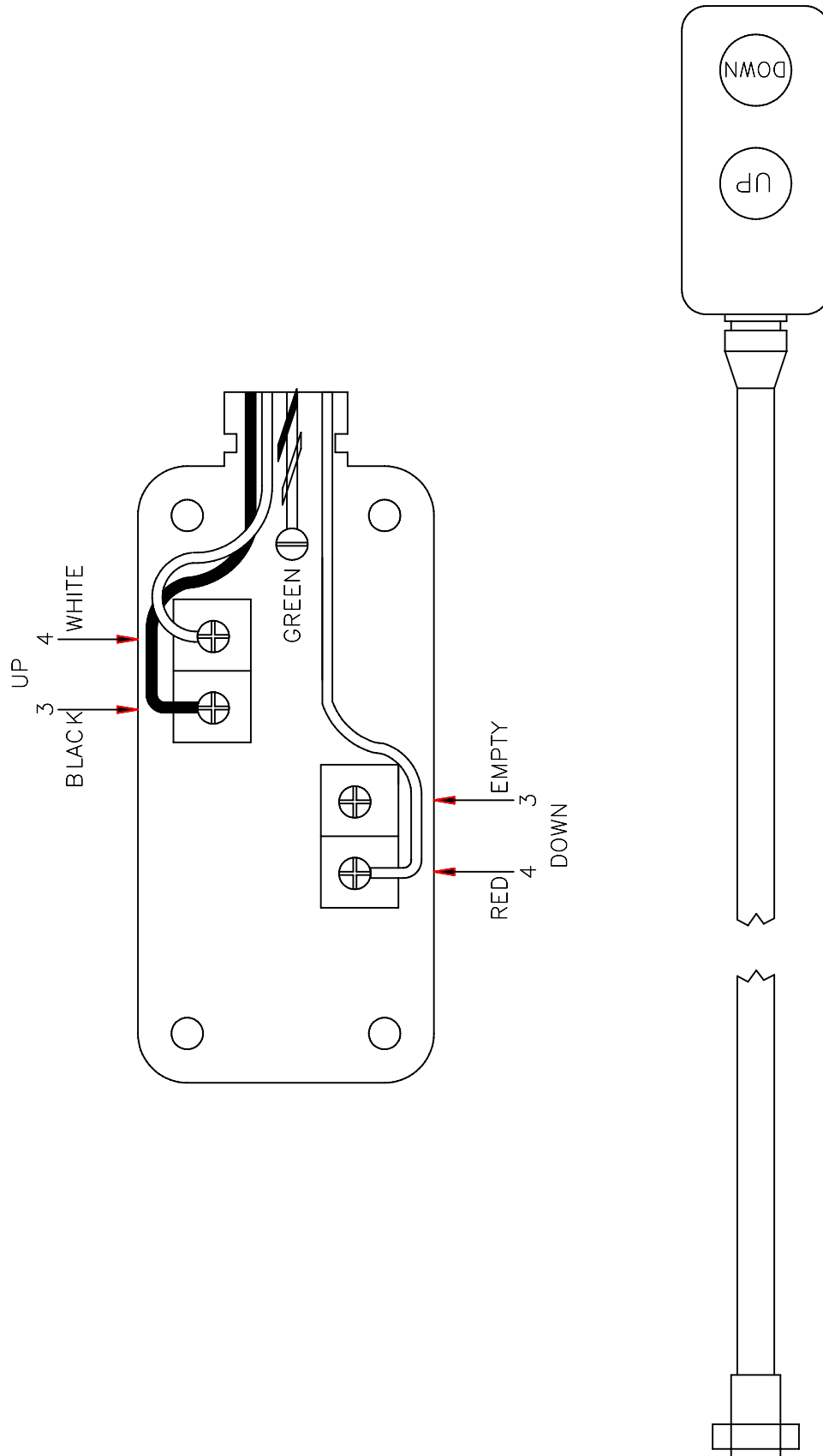


Parts List		
ITEM	P/N	DESCRIPTION
1	090507	Pump Hyd. OTC Y13, Metal Res. Footpump
2	602551	RESTRICTOR ORIFICE
3	602407	Quick Coupler, Male End
4	090247	Coupling, 3/8 NPT
5	091804	Hydraulic T Adapter
6	091803	Pressure Guage
7	090023	Hose, 120" x 3/8" NPT

ITEM	PART NO.	REQ'D	DESCRIPTION
SW1	450454	1	SWITCH, ROCKER
CB1	638270	1	CIRCUIT BREAKER PMP MIR 120V 25A
SOL3	NA	1	ELECTRIC SOLENOID WITH HYD VALVE



Wire Diagram - Control Pendant





P.O. Box 1368
Grand Island, Nebraska 68802-1368
Phone: 308/384-9747
Fax: 308/384-8966

www.chiefautomotive.com

**Chief reserves the right to alter product specifications
and/or package components without notice.**