

Fuzion

PARTS MANUAL



CHIEF'S LIMITED ONE-YEAR WARRANTY & LIABILITY

Chief Automotive Technologies warrants for one year from the date of installation and/or purchase any of its products which do not perform satisfactorily due to defect caused by faulty material or workmanship. Chief's obligation under this warranty is limited to the repair or replacement of products which are defective and which have not been misused, carelessly handled, or defaced by repairs made or attempted by others.

CHIEF AUTOMOTIVE TECHNOLOGIES DOES NOT ASSUME RESPONSIBILITY FOR ANY DEATH, INJURY OR PROPERTY DAMAGE RESULTING FROM THE OPERATOR'S NEGLIGENCE OR MISUSE OF THIS PRODUCT OR ITS ATTACHMENTS. CHIEF MAKES NO WRITTEN, EXPRESS OR IMPLIED WARRANTY WHATSOEVER OF MERCHANTABILITY OR FITNESS FOR A PARTICULAR PURPOSE OR OTHERWISE REGARDING THE EQUIPMENT OR ANY PART OF THE PRODUCT OTHER THAN THE LIMITED ONE-YEAR WARRANTY STATED ABOVE.


PARTS INFORMATION

To order replacement parts for the Chief Fuzion , contact an authorized representative of Chief Automotive Technologies, 308-384-9747 (or toll free 800-445-9252 – USA only)

The parts lists in the Fuzion Parts Manual (Part no. 638011) represent what Chief Automotive Technologies. considers to be user installed. Other repairs should be deferred to an authorized representative.

When contacting Chief Automotive Technologies by telephone or mail, provide the following information: name, name of business, business telephone number, and business address. Additional information needed when ordering: description of part (s) and part number(s). Also include the model number for which the part is intended.

NOTE: Chief reserves the right to alter product specifications and/or package components without notice.

 **CAUTION:** Always use Chief Automotive Technologies authorized replacement parts with the Fuzion. When replacing any part make certain the part meets the original equipment requirements.

Electrical Components

All electrical cords and components must be replaced with Chief Automotive Technologies authorized replacement parts.

Hydraulic Hoses

The ¼ inch I.D., two wire hoses furnished with this product meet the requirements of SAE 100R2, and have a working pressure of 5,000 PSI. They should not be used with any other system having a higher than 5,000 PSI output.

All hydraulic components must be replaced with Chief Automotive Technologies authorized replacement parts.

Bolts/Fasteners

All bolts and fasteners must be replaced with Chief Automotive Technologies, authorized replacement parts and must not be less than Grade 5 (Class 8.8).

Any bolt used in a pulling clamp that is frequently tightened must be Grade 8 (Class 10.9).

All bolt lengths and diameters must be equal to those installed at the factory.

Chain

The ½ inch tower chains furnished with this product are a special alloy frame straightening chain designed exclusively for Chief Automotive Technologies, to meet the rigid requirements of the collision repair industry. If replacement is required, purchase only the original Chief product from an authorized Chief Automotive Technologies representative.

The auxiliary 3/8-inch chains available for this product are a special alloy frame straightening chain designed exclusively for Chief Automotive Technologies to meet the rigid requirements of the collision repair industry. If replacement is required, purchase on the original Chief product from an authorized Chief Automotive Technologies representative.

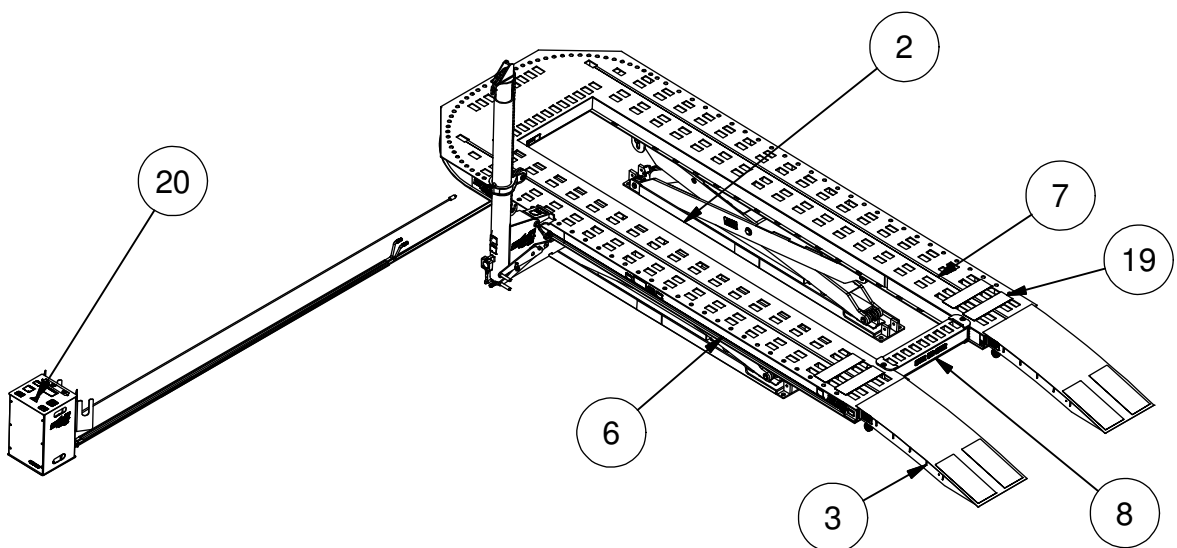
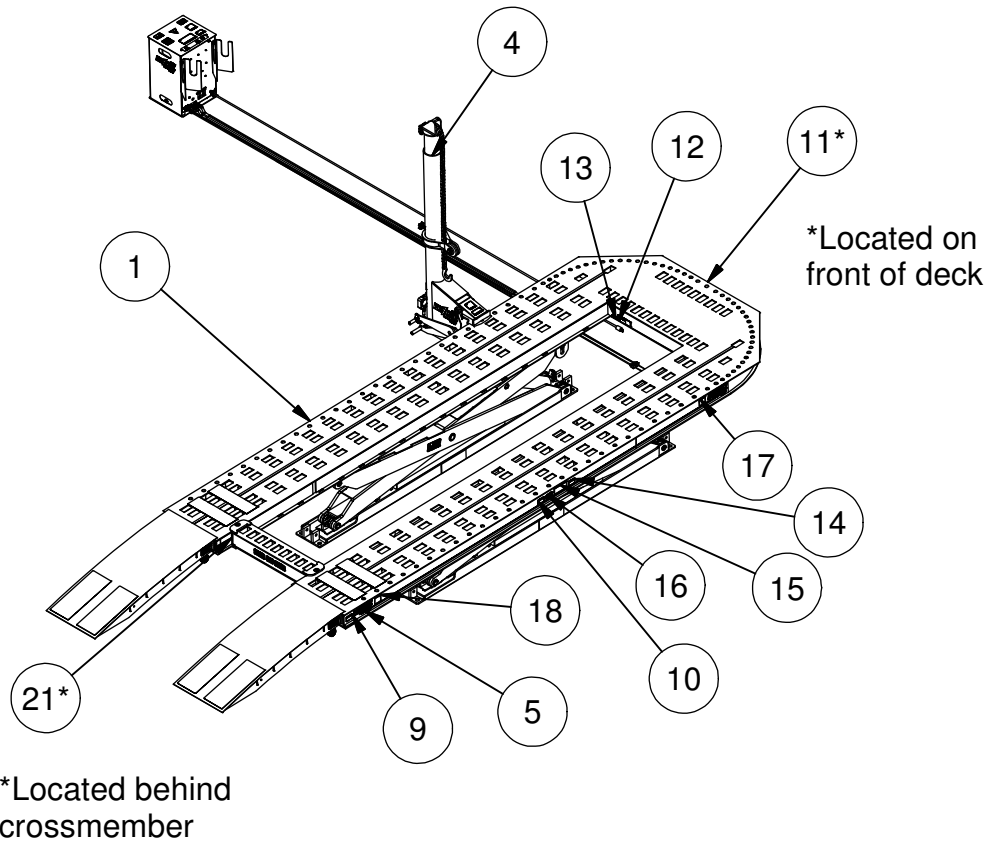
CAUTION: DO NOT use the 3/8-inch chain on towers.

Labels



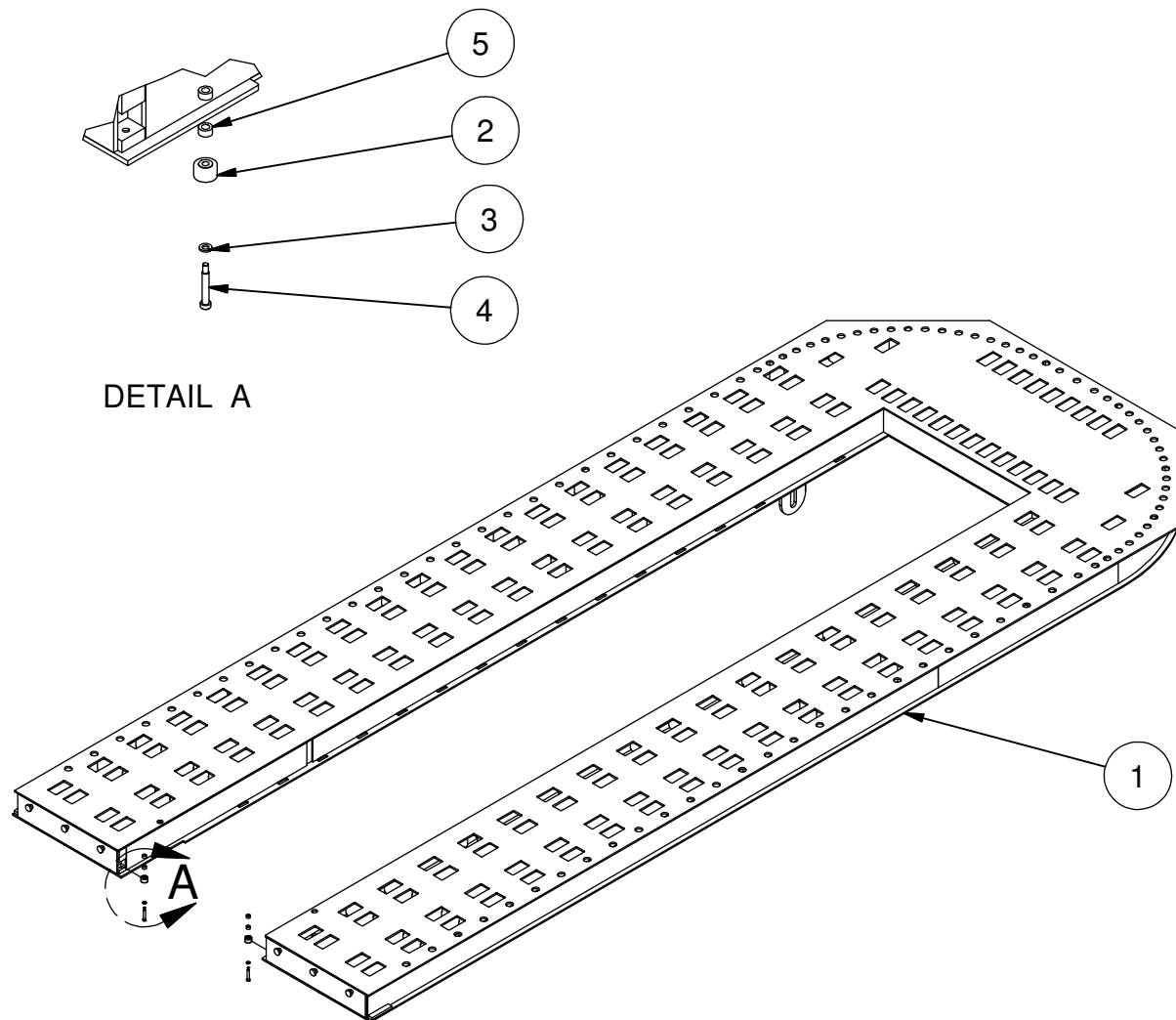
Replacement SAFETY and WARNING labels are available in several languages, and may be ordered by contacting an authorized Chief Automotive Technologies representative.

ASSEMBLY VIEW



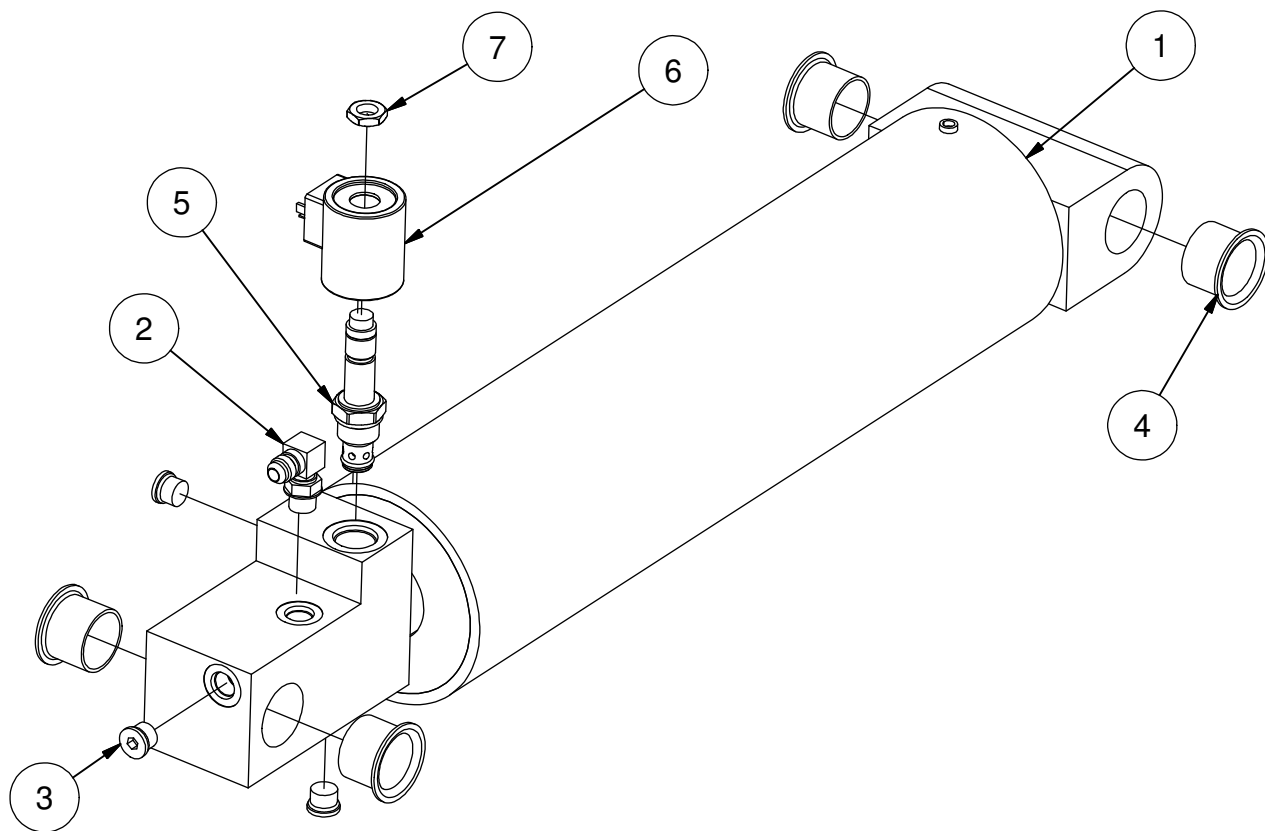
Parts List		
ITEM	P/N	DESCRIPTION
1	638330	Weldment, Fuzion Deck Assembly
2	638160	SCISSOR LIFT COMPLETE, FUZION
3	638400	FUZION RAMP
4	638290	Assembly, Fuzion Heavy Tower
5	638482	Decal, FUZION, Small, Mainframe
6	638019/169"	TAPE, BLACK 1/2"
7	305084/204.25"	Tape, Black, 1"
8	638450	RIGID CROSSMEMBER - FUZION
9	692154	Label, Caution Protect Foot
10	693339	Label, Caution -Egress/Ingress
11	788190	DECAL, CHIEF AUTOMOTIVE LOGO
12	692107	Label, Serial Number
13	692135	Label, Patent Pending
14	305093	Label, Caution - Excelsator Wheel Stops
15	692090	Label, Caution Operation
16	692143	Label, Caution -Lift of Persons Prohibited
17	692096	LABEL, CAUTION CROSSMEMBER POSITION
18	693338	Label, Warning, Fire Prevention
19	693433-19	Anti-Skid Tape, 5 5/8 x 21 3/4 Mainframe
20	638265	Assembly, Fuzion Pump Cabinet
21	638459	DECAL, CAUTION, INSERT NOW

Fuzion Deck Assembly



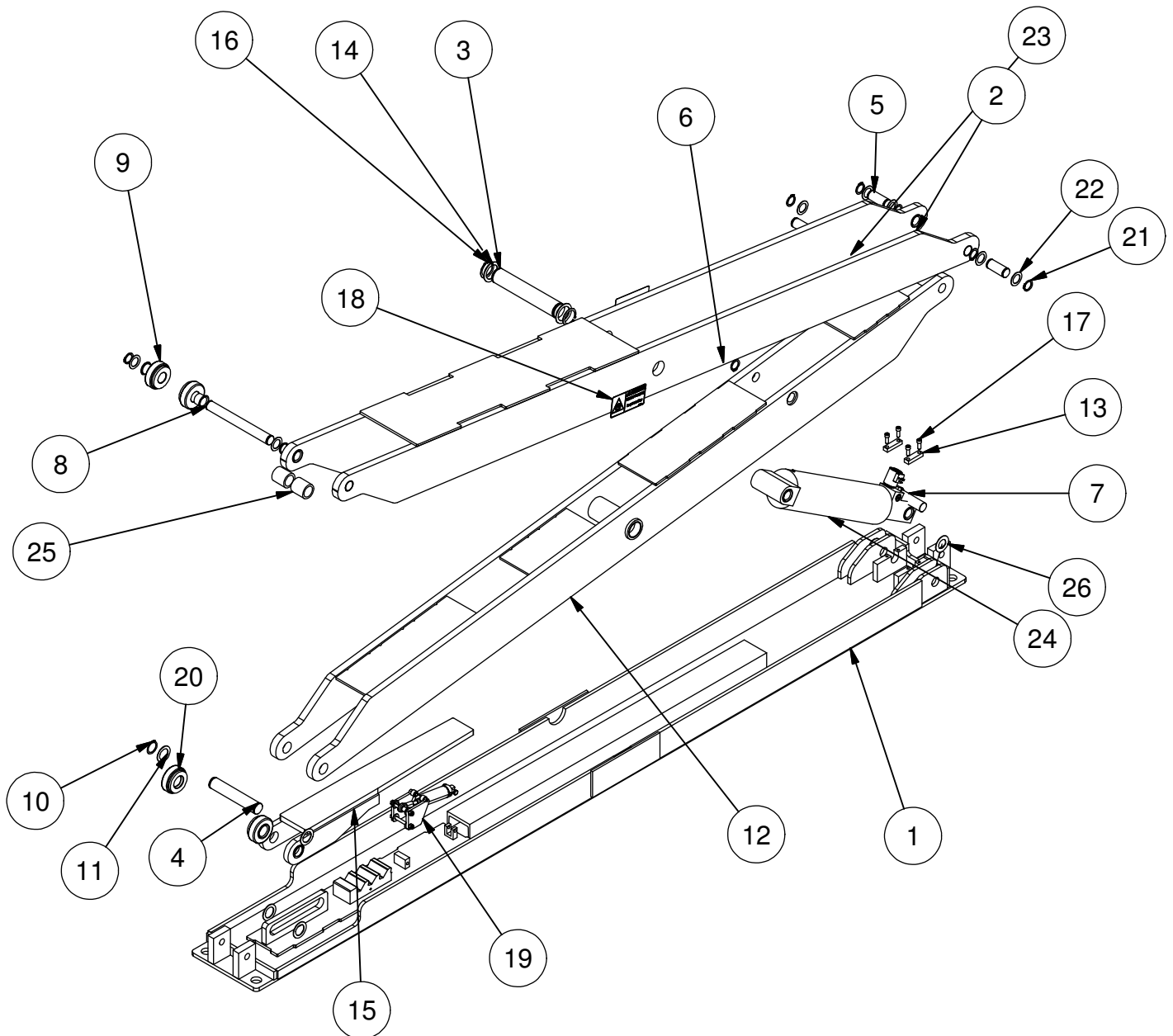
Parts List		
ITEM	P/N	DESCRIPTION
1	638332	Deck Weldment, Fuzion
2	450146	Roller, Inside Tower
3	629837	Washer, 3/8 Split Lock
4	450227	Bolt, 3/8" x 2" Shoulder - 5/16-18 Thread
5	638324	Spacer, .437 ID X .750 OD X .400 Lg

Fuzion Lift Cylinder Assembly



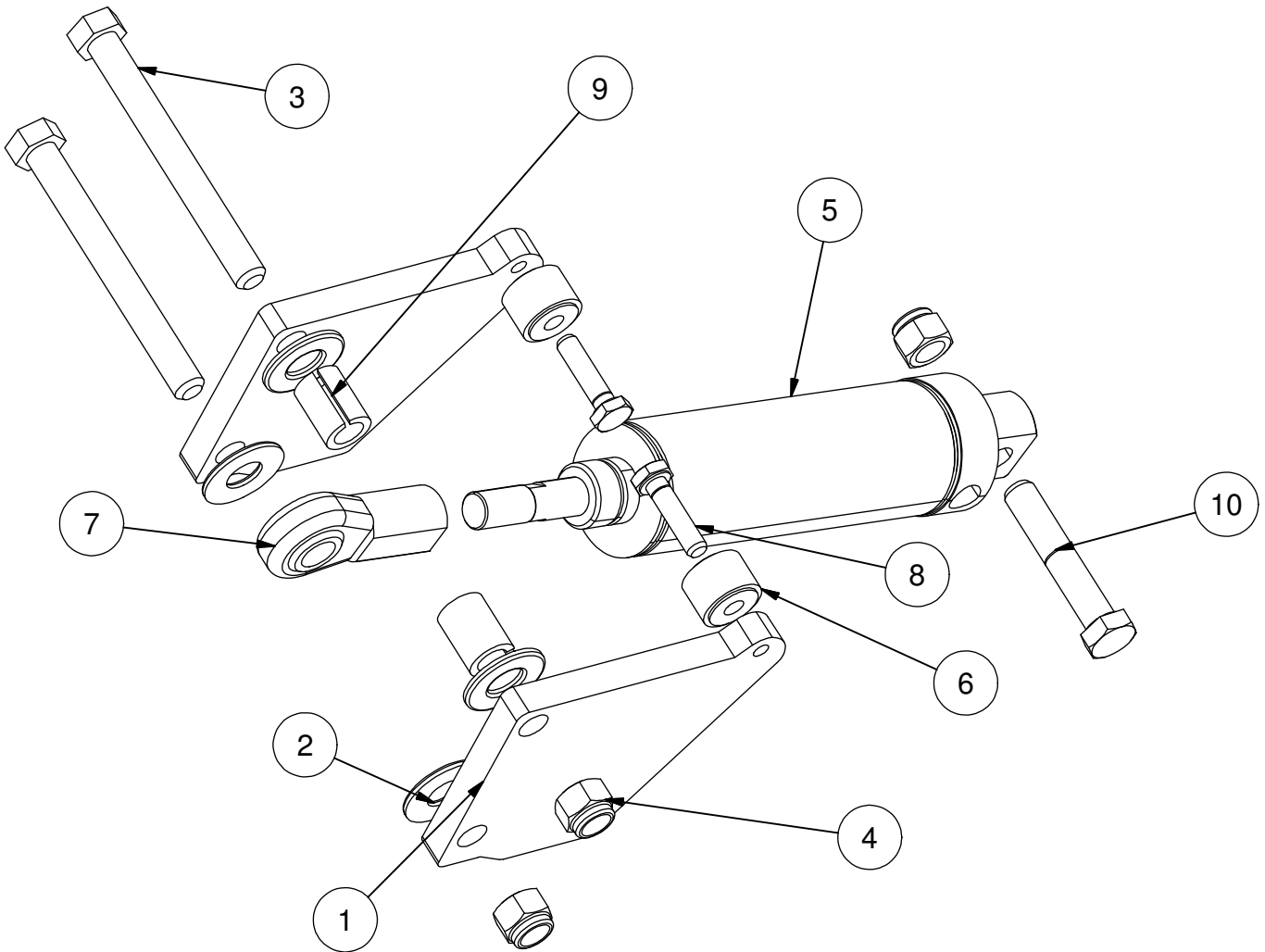
Parts List		
ITEM	P/N	DESCRIPTION
1	638204	LIFT RAM WELD ASSEMBLY, FUZION
2	305720	Fitting, Hyd #6MBX - #6MJ
3	305721	Plug, -6ORB Flush Head
4	305031	Bushing, 1 1/4" Bore x 1" Long
5	638231	SV10-28 Cartridge Valve, 2-Way Double Blocking Poppet #10
6	638507	Coil, HydraForce 12 VDC
7	450996	Nut, Cartridge Coil Retainer

Fuzion Scissor Lift Assembly



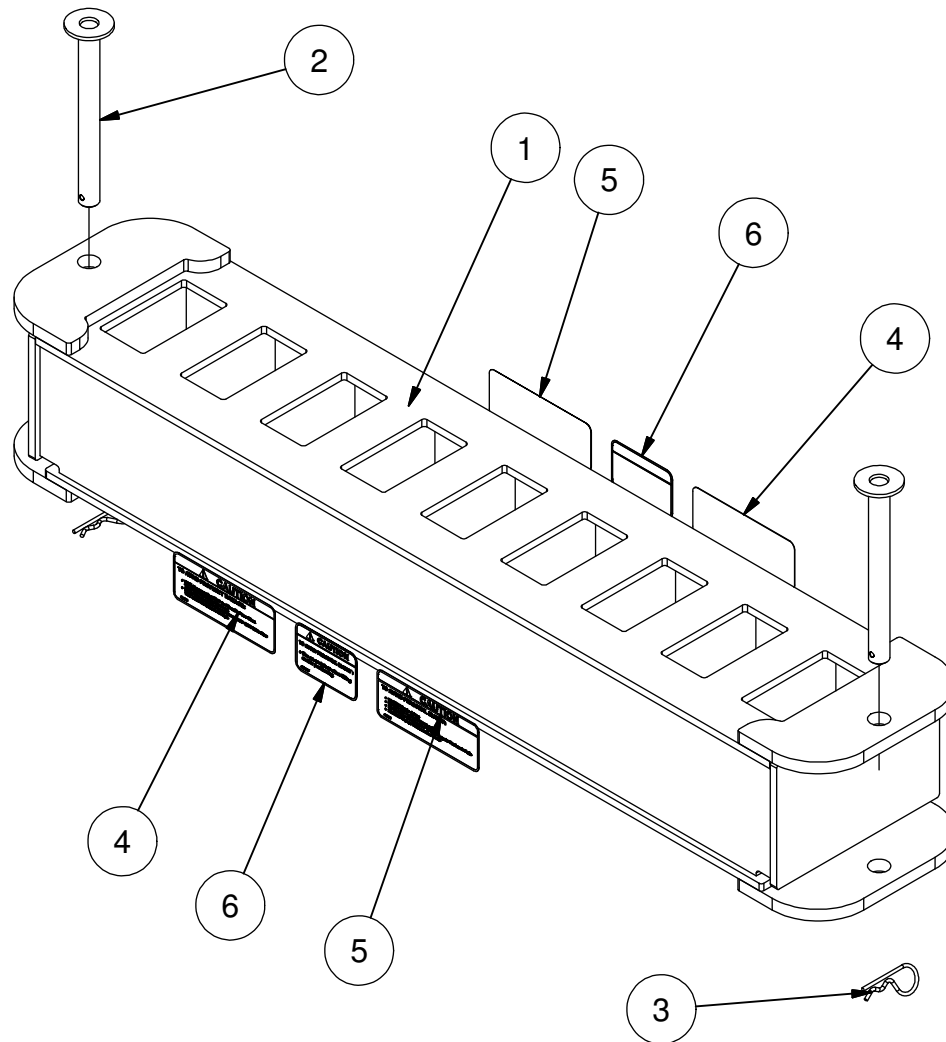
Parts List		
ITEM	P/N	DESCRIPTION
1	638172	BASE WELDMENT
2	638174	LIFT OUTER ARM WELDMENT
3	638180	CENTER PIVOT PIN, 2" X 11 1/8" LONG, SCISSOR
4	638181	PIN, INNER LIFT ARM, 1.50" X 8.125"
5	638186	PIN, OUTER LIFT ARM, 1.25" X 3.000"
6	638183	PIN, INNER LIFT ARM, 1.25" X 7.5"
7	638185	PIN, PIVOT, LIFT CYL. 1.25" x 6.0"
8	638184	PIN, OUTER LIFT ARM, 1.25" X 11.0"
9	638190	WHEEL ASSY. FUZION SCISSOR
10	092412	Snap Ring, HD for 1 1/2" shaft
11	638218	Washer, Flat - 1.50"IDx2.25"ODx14GA-plated
12	638179	INNER LIFT ARM ASSY FUZION SCISSOR
13	450587	Retainer, E/VHT Lift Cylinder Bottom
14	638384	Washer, Flat, 2" ID x 2-3/4" OD x 3/32", Plated
15	638191	WELDMENT, SCISSOR LOCK ASSEMBLY
16	401470	Retaining Ring, 2" Dia Shaft
17	450195	Screw, 3/8-16NC x 1.00" Socket Head Cap
18	692165	Label, Caution, Pinch point, Hands
19	638187	LOCK RELEASE
20	638216	WHEEL ASSY, FUZION SCISSOR
21	693468	Snap Ring, HD for 1 1/4" shaft
22	707487	Washer, Flat - 1.25"IDx1.875"ODx14GA-plated
23	450586	Pin, E/VHT Lift Leg
24	638204	LIFT RAM, FUZION
25	638230	WHEEL SPACER
26	305030	Washer, Thrust-1.25"IDx2.25"ODx.0625"

Lock Release Mechanism



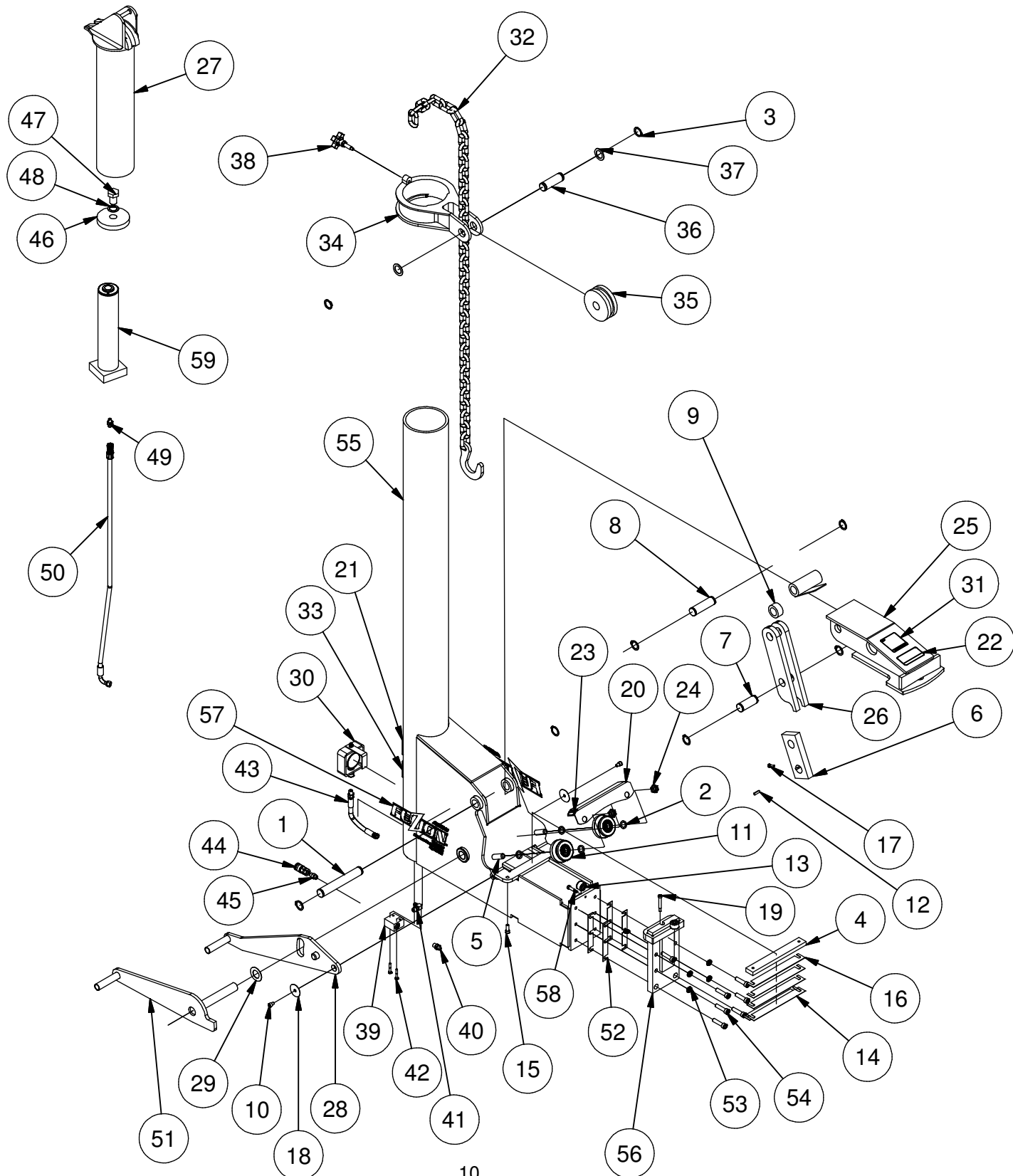
Parts List		
ITEM	P/N	DESCRIPTION
1	638219	LOCK RELEASE ARM
2	629845	Washer, 3/8" Flat, Series N, Plated
3	095924	Bolt, 3/8-16 NC X 3-1/2" HHCS Gr-8
4	629440	Nut, 3/8-16NC Hex Lock
5	638194	PNUEMATIC CYLINDER - FUZION LIFT
6	638193	LOCK RELEASE ROLLER
7	638196	LOCK RELEASE ROD END
8	630635	Bolt, 1/4-20 x 1 Hex
9	638222	SPACER, LOCK CYLINDER ASSY, LIFT
10	620728	Bolt, 3/8-16 x 2" Hex Head

Fuzion Rigid Crossmember



Parts List		
ITEM	P/N	DESCRIPTION
1	638450	RIGID CROSSMEMBER
2	638458	PIN WELDMENT, RIGID CROSSMEMBER, FUZION
3	620269	Hairpin, .125, zinc plated
4	692163	Label, Caution, Pinning Rigid Crossmember
5	692092	Label, Caution Crossmember, Personal Injury
6	692145	Label, Caution -TO AVOID PERSONAL INJURY

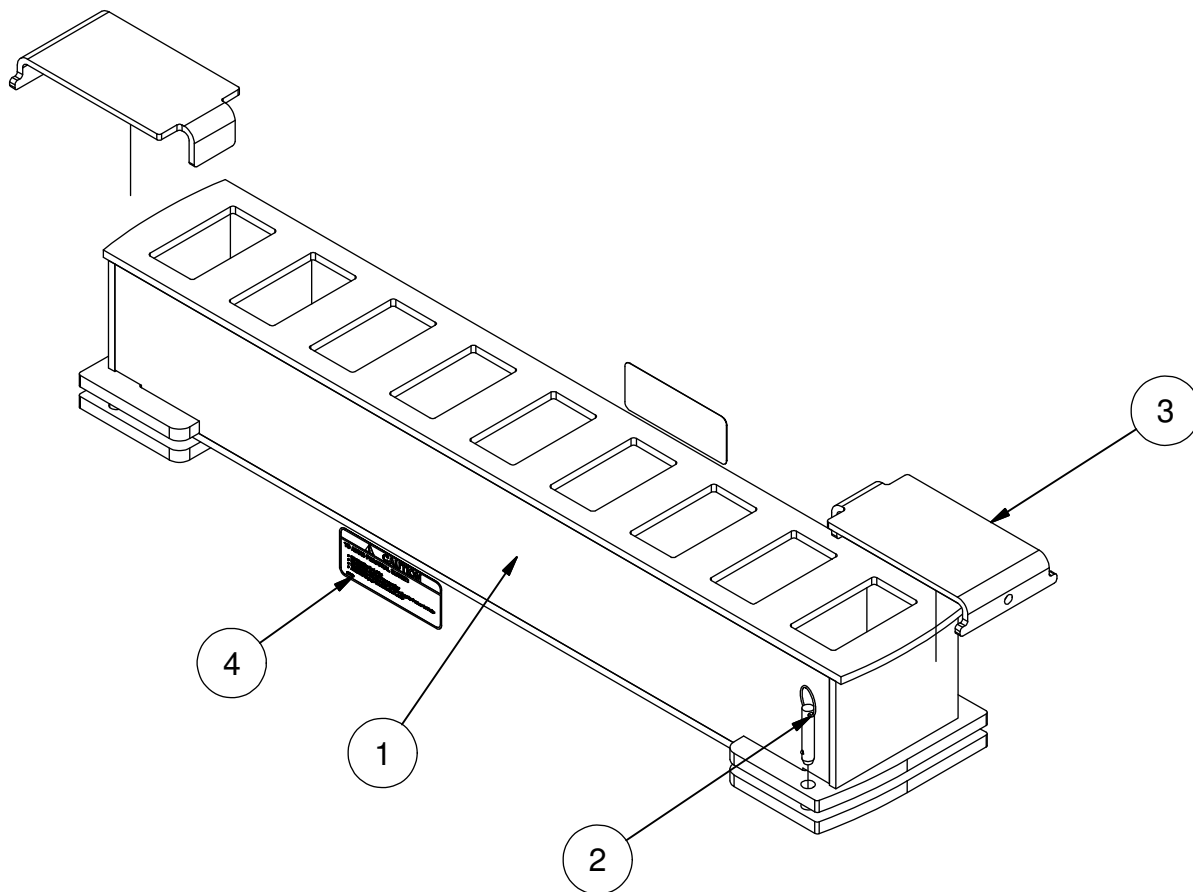
Fuzion Tower



Fuzion Tower

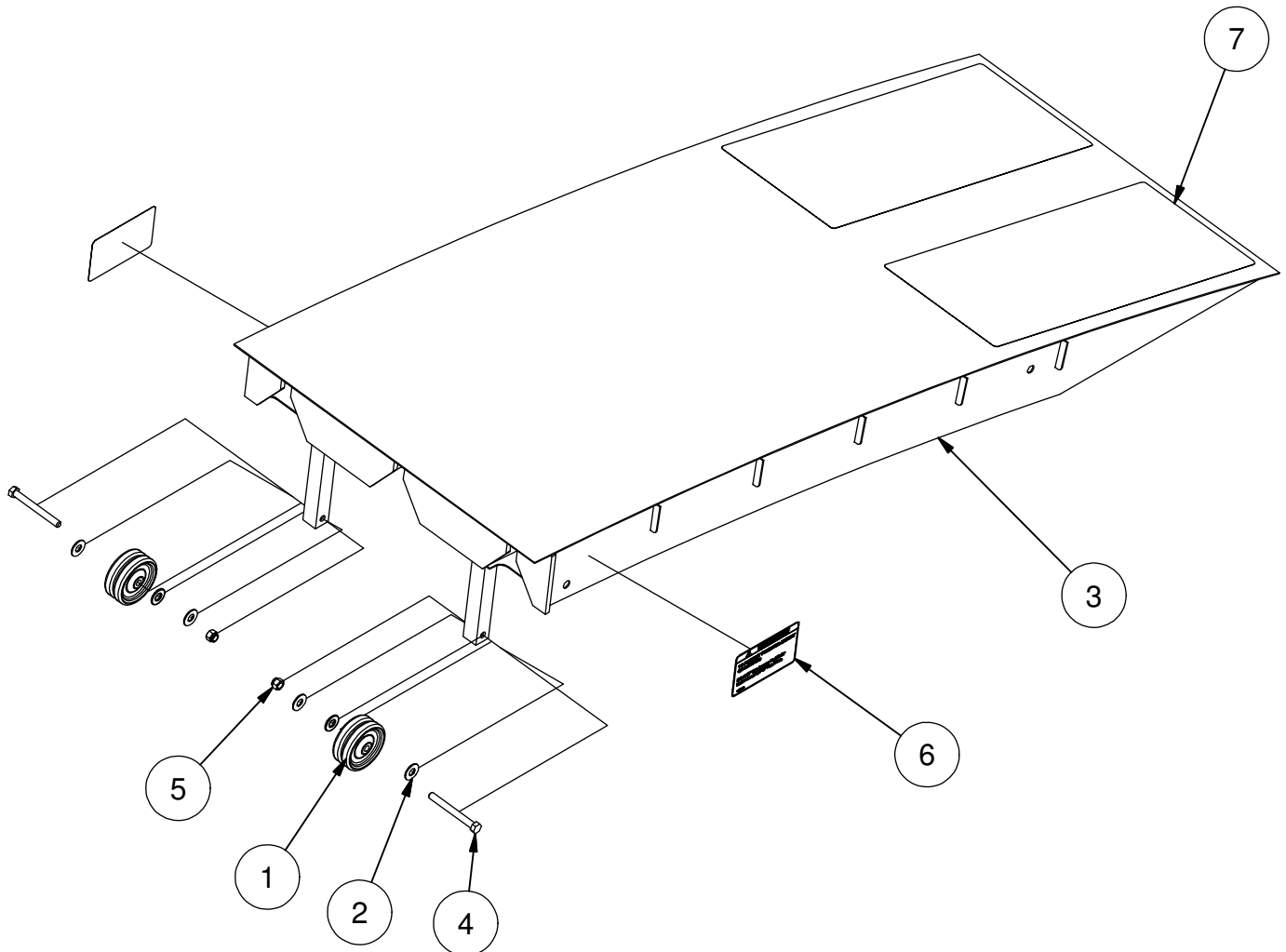
Parts List		
ITEM	P/N	DESCRIPTION
1	687102	Pin, 360-10 Ton Tower Linkage Long
2	305063	Washer, 3/4" ID x 1 1/8 OD x .093" Thick Shim
3	693468	Snap Ring, HD for 1 1/4" shaft
4	687101	Spacer, 360-10 Ton Tower Outrigger
5	629773	Bolt, 3/4-10 NC x 2 3/4" Long
6	450279	Bar, Tower Linkage Driver
7	687104	Pin, 360-10 Ton Tower Linkage Short
8	687103	Pin, 360-10 Ton Tower Linkage Medium
9	450234	Spacer, Tower Force Clamp
10	450243	Screw, 3/8-16 Socket Head Cap
11	450235	Assembly, Tower Outside Wheel
12	450244	Key, 1/4 x 1/4 x 1"
13	450146	Roller, Inside Tower
14	687107	Shim, 360-10 Ton Tower Outrigger .0164"
15	450195	Screw, 3/8-16NC x 1.00" Socket Head Cap
16	687106	Shim, 360-10 Ton Tower Outrigger .0598"
17	630635	Bolt, 1/4-20 x 1 Hex
18	450241	Washer, 2" OD x 13/32" ID x .047" Thick
19	450227	Bolt, 3/8" x 2" Shoulder - 5/16-18 Thread
20	638321	Guard, Fuzion Tower, Outside Roller
21	693337	Label, Warning, Do Not Position Yourself
22	692091	Label, Warning, Force Clamp, Impulse
23	692093	Label, Caution, Pinch-Point, Impulse
24	770016	NUT, 3/4-10NC LOCK JAM GR5 PL
25	687125	Weldment, 360-10 Ton Sure Lock
26	687105	Bar, 360-10 Ton Tower Float Linkage
27	610001	Tower Head, 1/2" Chain 10-Ton
28	687137	Weldment, 360-10 Ton Sure Lock Release
29	305030	Washer, Thrust-1.25" ID x 2.25" OD x .0625"
30	601130	Portable Gauge Assembly, Front S21
31	692096	LABEL, CAUTION CROSSMEMBER POSITION
32	602870	Chain, 1/2" Tower w/Hook
33	692057	DECAL, CAUTION ON ANGLE PULLS
34	607161	Machined Collar, S21
35	601201	Roller, 5" x 1/2" Chain - S21/POSI TRAK Collar
36	680747	Pin, Grooved for Cast Collar
37	707487	Washer, Flat - 1.25" ID x 1.875" OD x 14GA-plated
38	602829	Assembly, Tower Collar Locking Knob
39	450592	Block, Tower Manifold
40	601046	Straight Adapter, 6400-6-6
41	305720	Fitting, Hyd #6MBX - #6MJ
42	630643	Bolt, 1/4-20NC x 1 1/2 Hex Plated Gr. 2
43	450594	Hose, -6FJX to 6MPX x 10" x 1/4" ID
44	305723	Coupler, Female Flat Face
45	305726	Fitting, Hyd #6MB - #6MB
46	601238	Flange, 4 3/4" Diameter
47	602619	Ram Bolt
48	770147	Washer, 1" Internal Tooth Lock
49	601048	Straight Adapter, 6400-6-4
50	450593	Hose, 53" x 3/8" ID -6FJX to -6FJX90M
51	687143	Weldment, Wide Sure Lock Shaft
52	638314	Shim, Fuzion Heavy Tower - 16 ga.
53	707436	Washer, 1/2" Split Lock
54	638323	Screw, 1/2-13 UNC x 2.0" Socket Head Cap
55	638295	Weldment, Heavy Pull Tower
56	638310	Weldment, Hook, 90-inch Tower
57	638480	Decal, FUZION, Large, Tower
58	305943	Bolt, 3/8" x 1" Shoulder - 5/16-18 Thread
59	638299	Cylinder, 2.5" Bore (63.5mm) x 257mm Stroke, Spring Return
	450471	Assembly, eVHT Tower Cylinder (Global)

Fuzion Moveable Crossmember



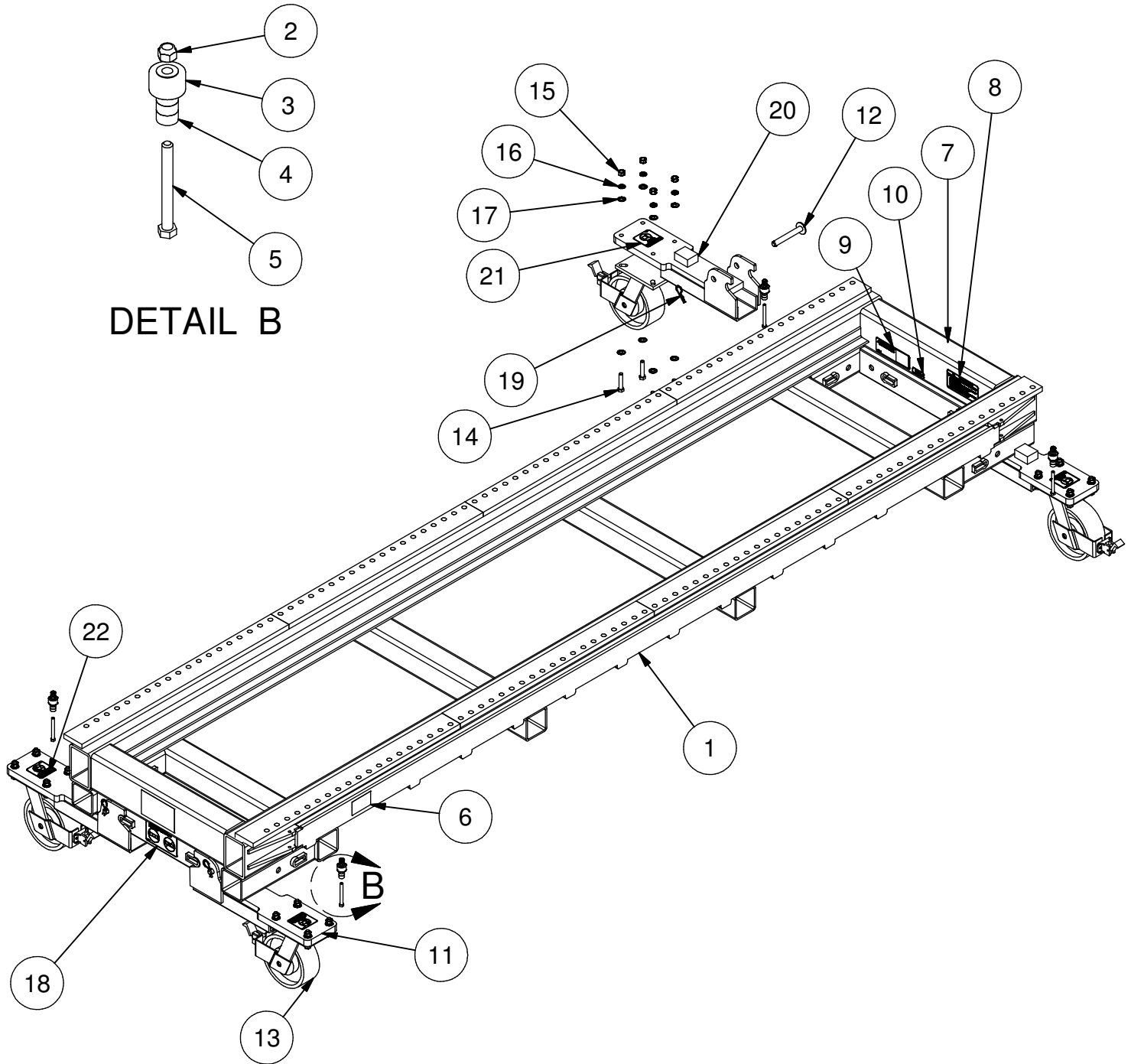
Parts List		
ITEM	P/N	DESCRIPTION
1	638460	MOVEABLE CROSSMEMBER
2	450267	PIN, CROSSMEMBER LOCK
3	681336	CROSSMEMBER LOCK, II
4	692092	Label, Caution Crossmember, Personal Injury

Fuzion Ramp



Parts List		
ITEM	P/N	DESCRIPTION
1	657889	3" RUBBER WHEEL
2	629845	Washer, 3/8" Flat, Series N, Plated
3	638396	Fuzion Ramp
4	095924	Bolt, 3/8-16 NC X 3-1/2" HHCS Gr-8
5	629440	Nut, 3/8-16NC Hex Lock
6	692168	LABEL, WARNING, DO NOT USE RAMPS
7	693425	Anti-Skid Tape, 9" x 22"

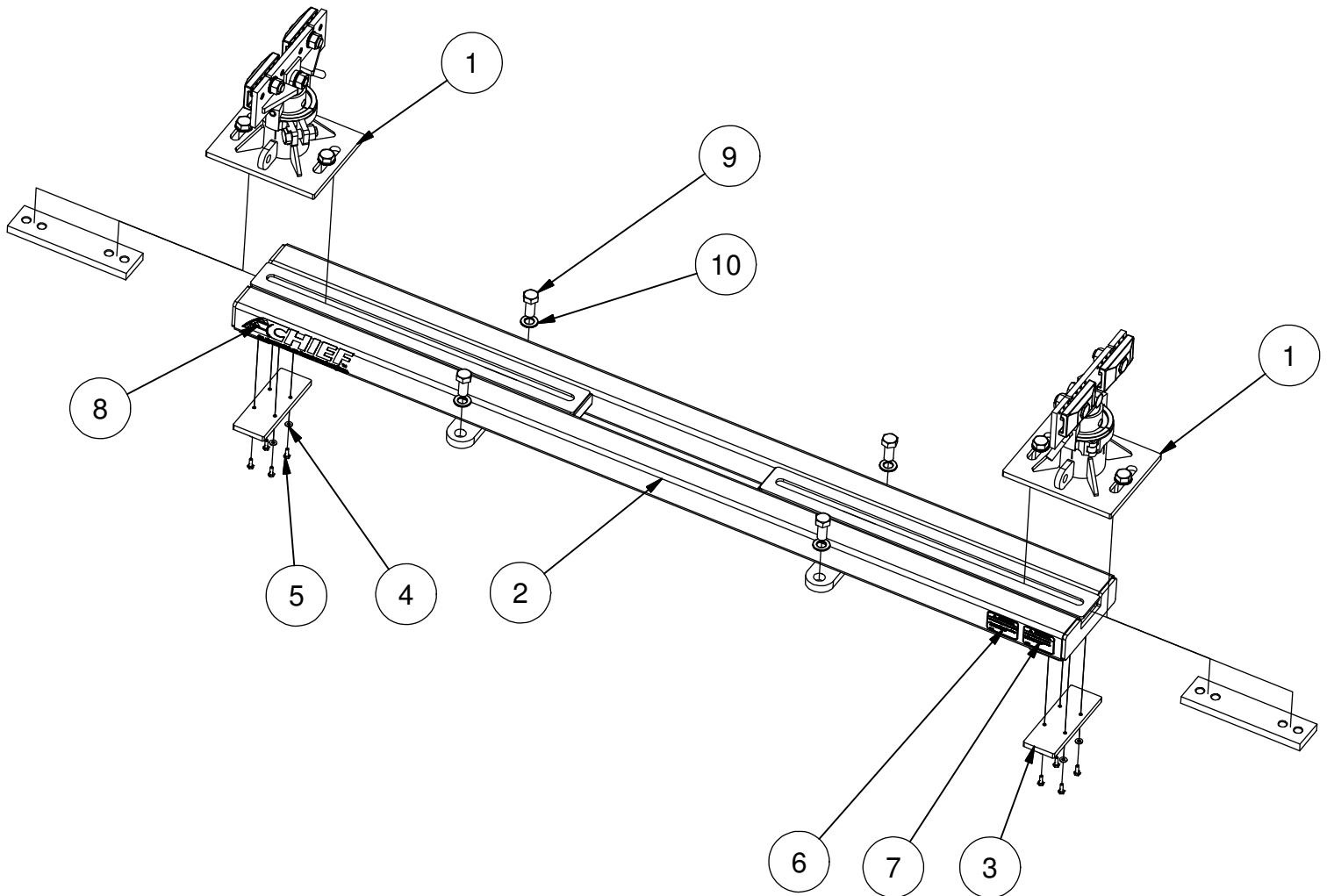
FUZION SHOP HOPPER



FUZION SHOP HOPPER

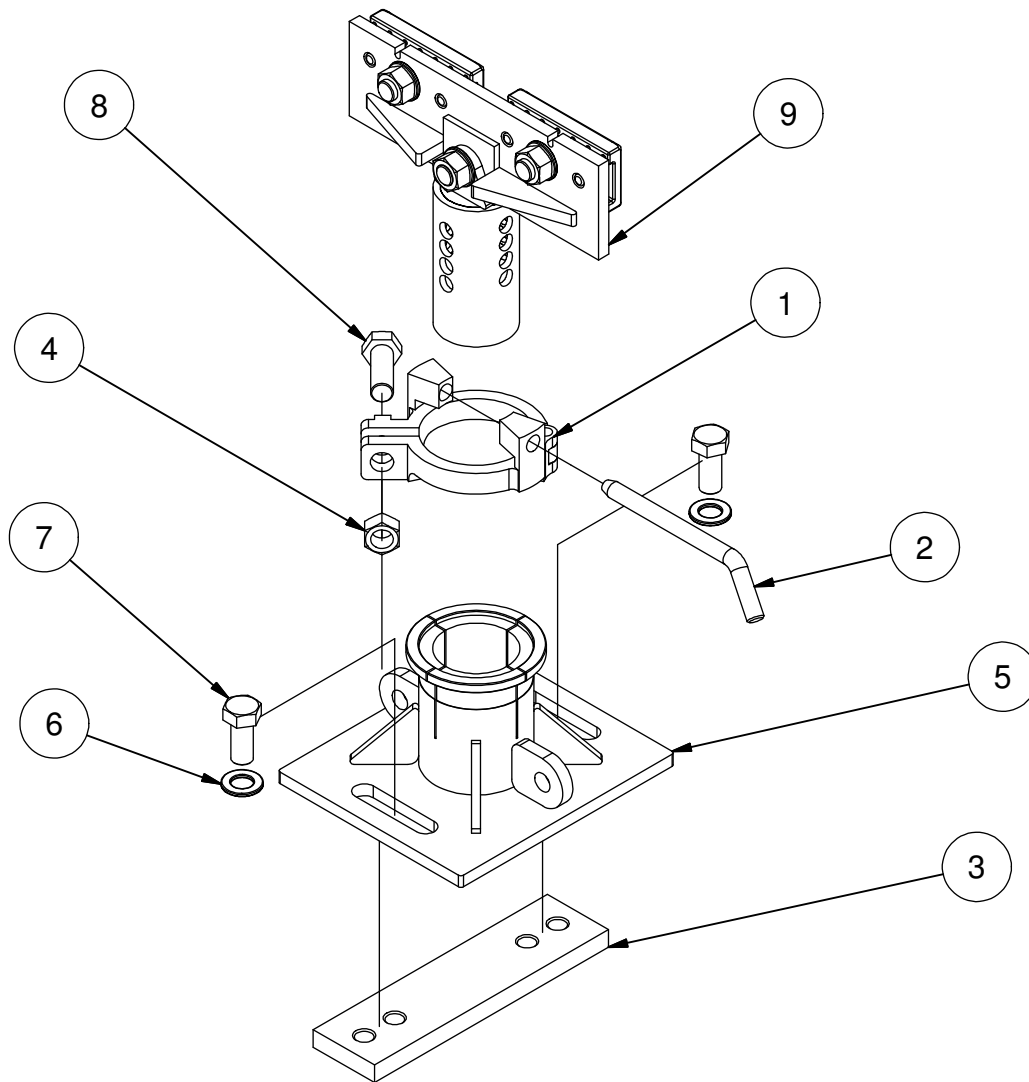
Parts List		
ITEM	P/N	DESCRIPTION
1	638540	Weldment, Trolley, Parts-holding
2	629440	Nut, 3/8-16NC Hex Lock
3	450146	Roller, Inside Tower
4	638324	Spacer, .437 ID X .750 OD X .400 Lg
5	095924	Bolt, 3/8-16 NC X 3-1/2" HHCS Gr-8
6	638485	DECAL, SMALL, FUZION SHOP HOPPER
7	638483	DECAL, LARGE, FUZION SHOP HOPPER
8	692164	Label, Warning -PREVENT SEVERE PERSONAL INJURY/DEATH
9	692107	Label, Serial Number
10	692135	Label, Patent Pending
11	638525	SHOPHOPPER REM CASTER MOUNT
12	638517	PIN, 5.50 LONG WELDED
13	638285	Caster, 8" Diameter Wheel, Trolley
14	010630	BOLT, 1/2" X 2-1/2"
15	620736	NUT, 1/2"
16	707436	Washer, 1/2" Split Lock
17	019095	WASHER, .50 I.D., 16GA
18	638537	Label, Warning -REMOVABLE CASTER DIAGRAM
19	620269	Hairpin, .125, zinc plated
20	638531	SHOPHOPPER REM CASTER MOUNT
21	638563	Label, Warning - Removeable Caster
22	638532	Label, Warning - Removeable Caster

Fuzion Anchoring Crossbar



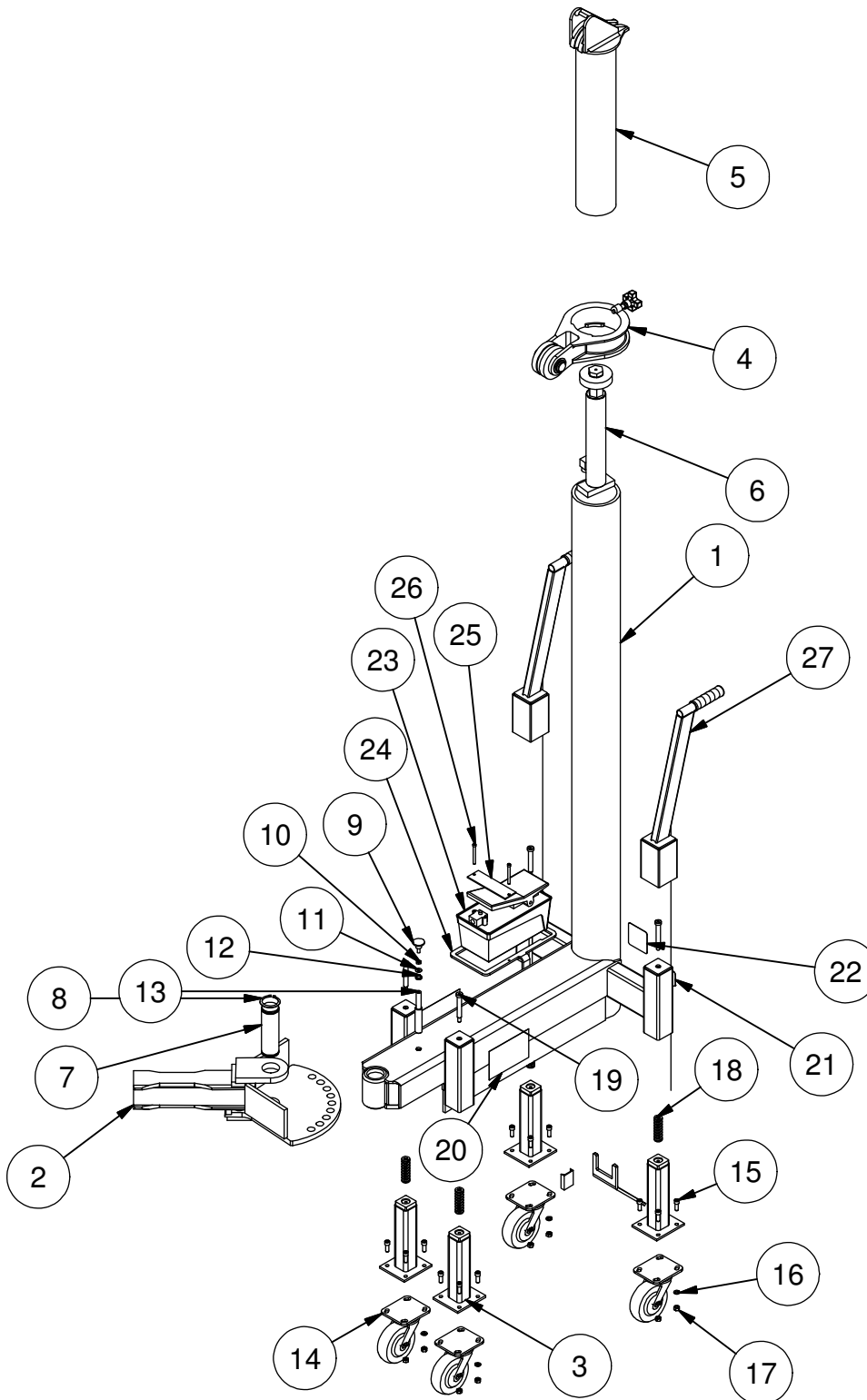
Parts List		
ITEM	P/N	DESCRIPTION
1	638155	Assembly, Anchoring Stand, Fuzion
2	638035	Weldment, Anchoring Crossbar
3	638242	End Spacer Pad, Anchoring Crossbar
4	707410	Washer, 1/4" Flat
5	706409	Bolt, 1/4-20NC x 3/4" Gr2 Plated
6	692145	Label, Caution -TO AVOID PERSONAL INJURY
7	692146	Label, Caution TO PREVENT PROPERTY DAMAGE
8	500120	DECAL, CHIEFLOGO 2-1/2" X 10.6" LIFT
9	539005	Bolt, M20 x 2.5 x 40 Hex
10	601738	Washer, 3/4 Flat

Fuzion Anchoring Stand



Parts List		
ITEM	P/N	DESCRIPTION
1	607381	Locking Collar Assembly
2	606686	HEIGHT ADJUSTING PIN, UAS, PLATED
3	638032	Bar, Anchor Stand Retainer
4	539016	Nut, M20 x 2.5 Hex
5	638025	Weldment, Anchoring Crossbar Slider
6	601738	Washer, 3/4 Flat
7	539005	Bolt, M20 x 2.5 x 40 Hex
8	539006	Bolt, M20 x 2.5 x 60 Hex
9	638470	SH Anchor Assembly

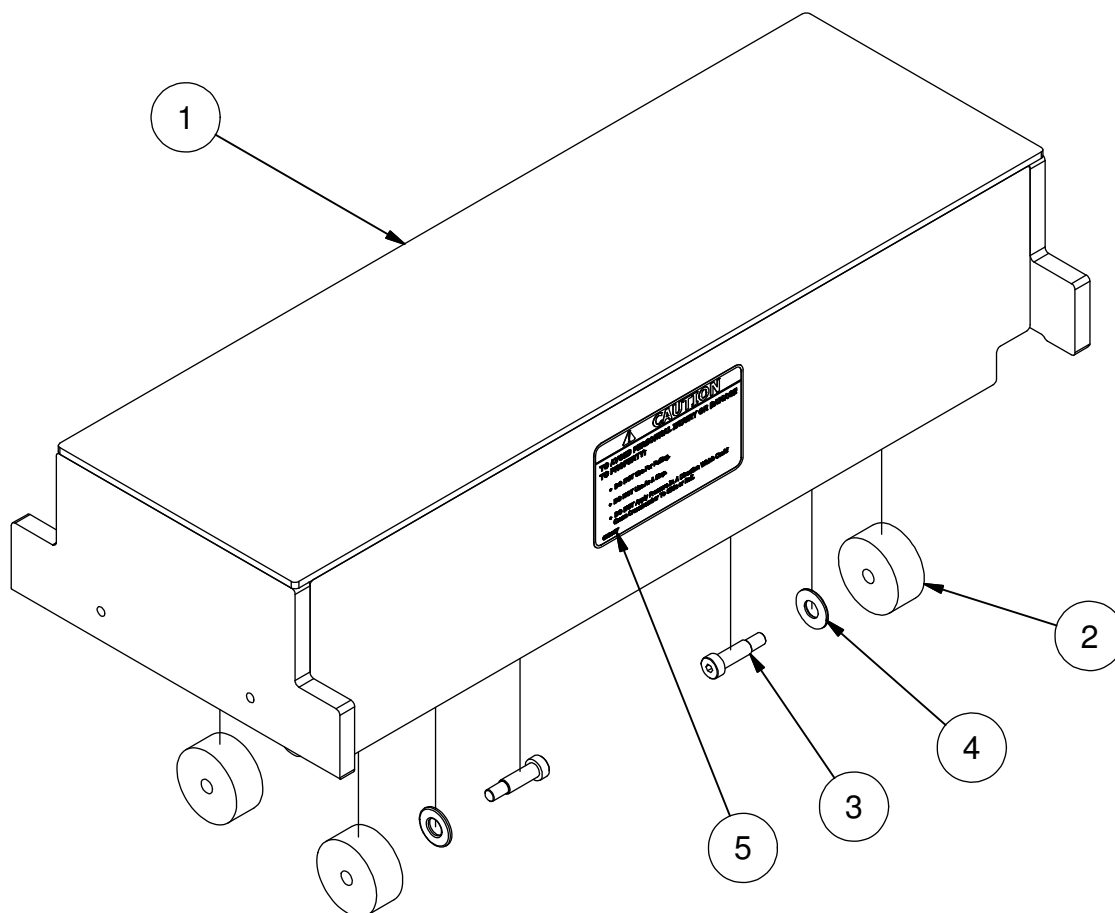
Shop Hopper 5-Ton Tower



Shop Hopper 5-Ton Tower

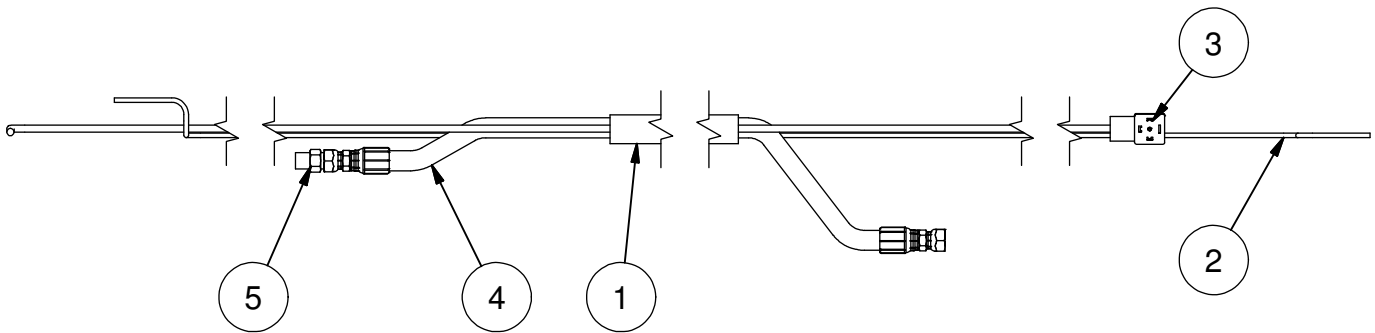
Parts List		
ITEM	P/N	DESCRIPTION
1	638411	Weldment, Tower Body W/Pipe
2	638412	Assembly, Insert, Fuzion Lt. Tower
3	638427	SPRING LEG, SHOP HOPPER TOWER
4	690793	Assembly, EZ-II Collar
5	690611	Weldment, EZ-II Tower Head
6	689859	RAM ASSEMBLY, TOWER, CHIEF, 5-TON
7	401348	Pin, Grooved, 2" Dia. X 6-3/8"
8	401470	Retaining Ring, 2" Dia Shaft
9	401479	Knob, Push-Pull, DK-52
10	629714	Nut, 5/16-18 UNC, Plated
11	401481	Washer, 1/4" Series W Plated
12	092110	Spring, Compression, .720 x 1
13	401480	Pin, 13/16" Dia., Fuzion Lt. Tower
14	092443	Caster, Swivel, 5" Dia. Wheel, Light Tower
15	450195	Screw, 3/8-16 x 1.00" Socket Head Cap
16	629837	Washer, 3/8 Split Lock
17	620744	Nut, 3/8-16 Hex Plated Gr. 5
18	638446	Spring, Tower Leg
19	638445	Bolt, 1/2" x 3.0" Shoulder - 3/8-16 Thread
20	638483	DECAL, LARGE, FUZION SHOP HOPPER
21	692154	Label, Caution Protect Foot
22	693337	Label, Warning, Do Not Position Yourself
23	090507	Pump Hyd. OTC Y13, Metal Res. Footpump
24	450263	Ring, Foot Pump Storage
25	450264	Strap, Foot Pump Storage
26	011063	Screw, 1/4-20 X 2.75 Socket Head Cap
27	638447	TOWER HANDLE ASSEMBLY, SHOP HOPPER

Shop Hopper Rolling Crossmember



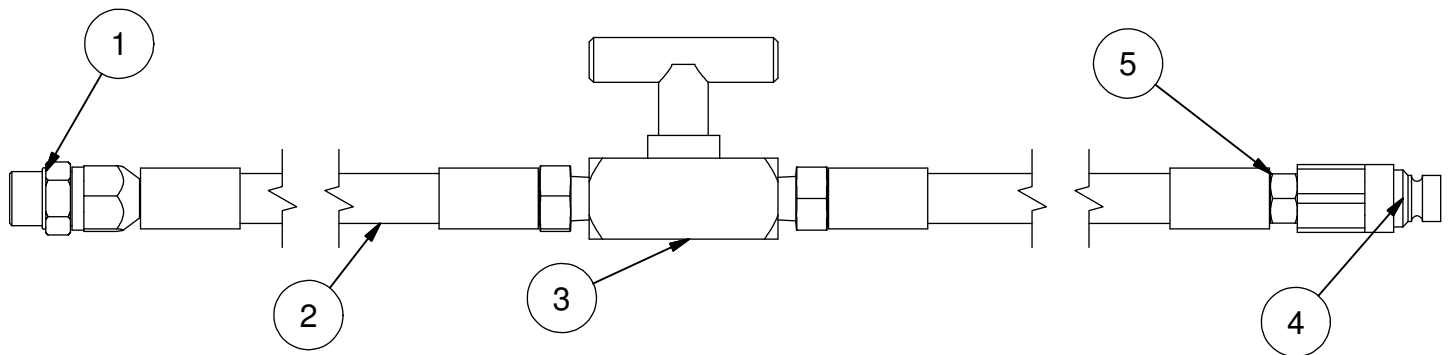
Parts List		
ITEM	P/N	DESCRIPTION
1	638325	Weldment, Rolling Crossmember, Shop Hopper
2	638257	Wheel, Rolling Xmember, SHOP HOPPER
3	305943	Bolt, 3/8" x 1" Shoulder - 5/16-18 Thread
4	629845	Washer, 3/8" Flat, Series N, Plated
5	692167	LABEL, CAUTION, CROSSMEMBER INJURY / PROPERTY

Cabinet to Mainframe Assembly



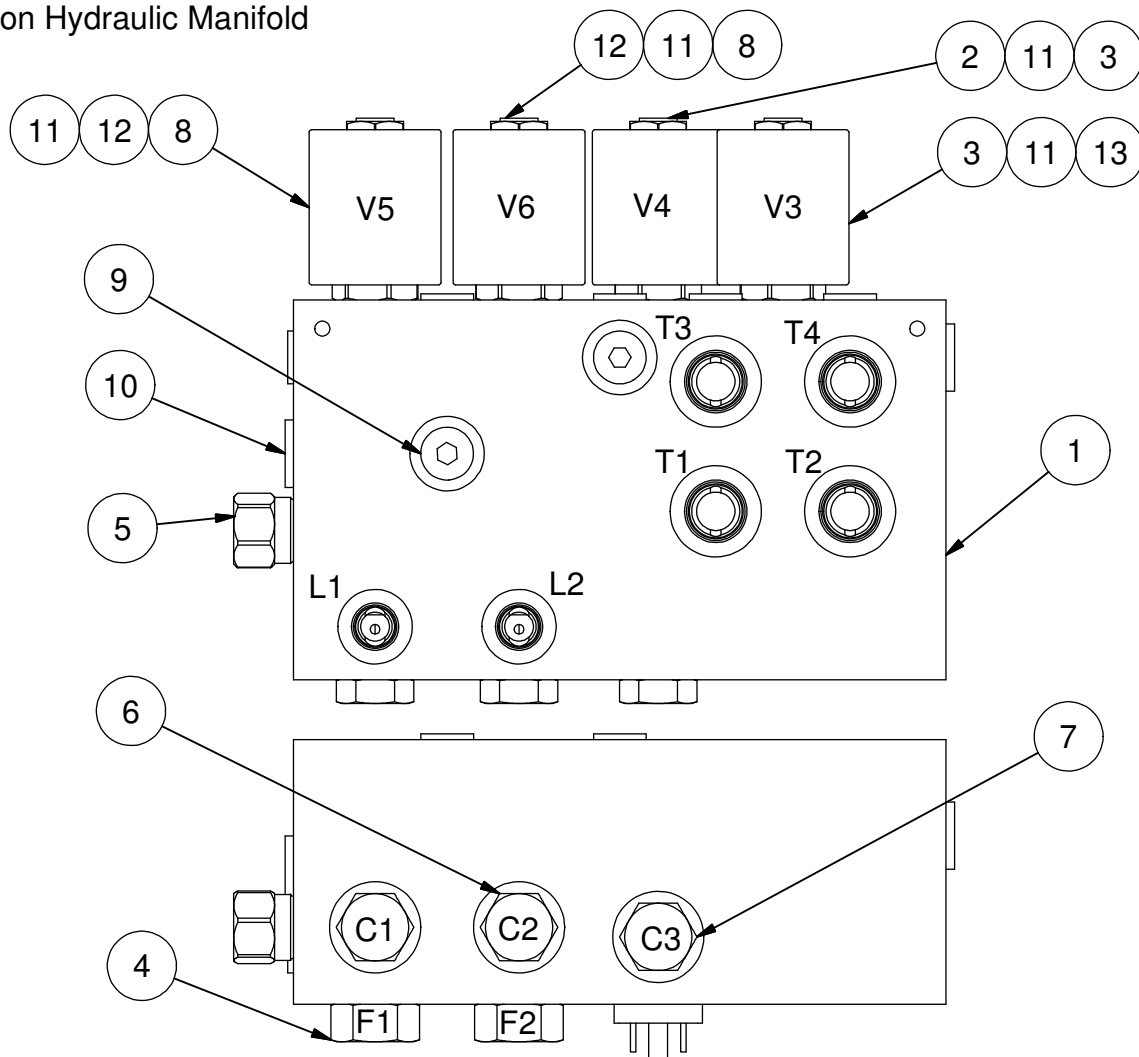
Parts List		
ITEM	P/N	DESCRIPTION
1	638538	Hose Protector, 1.22" dia
2	305848	Tubing, 5/32" Soft Nylon Black
3	638536	DIN PLUG, DIN43650 21' 18GA LEAD
4	450497	HOSE, HYDRAULIC SIDE 218"
5	601046	Straight Adapter, 6400-6-6

Auxiliary Hose



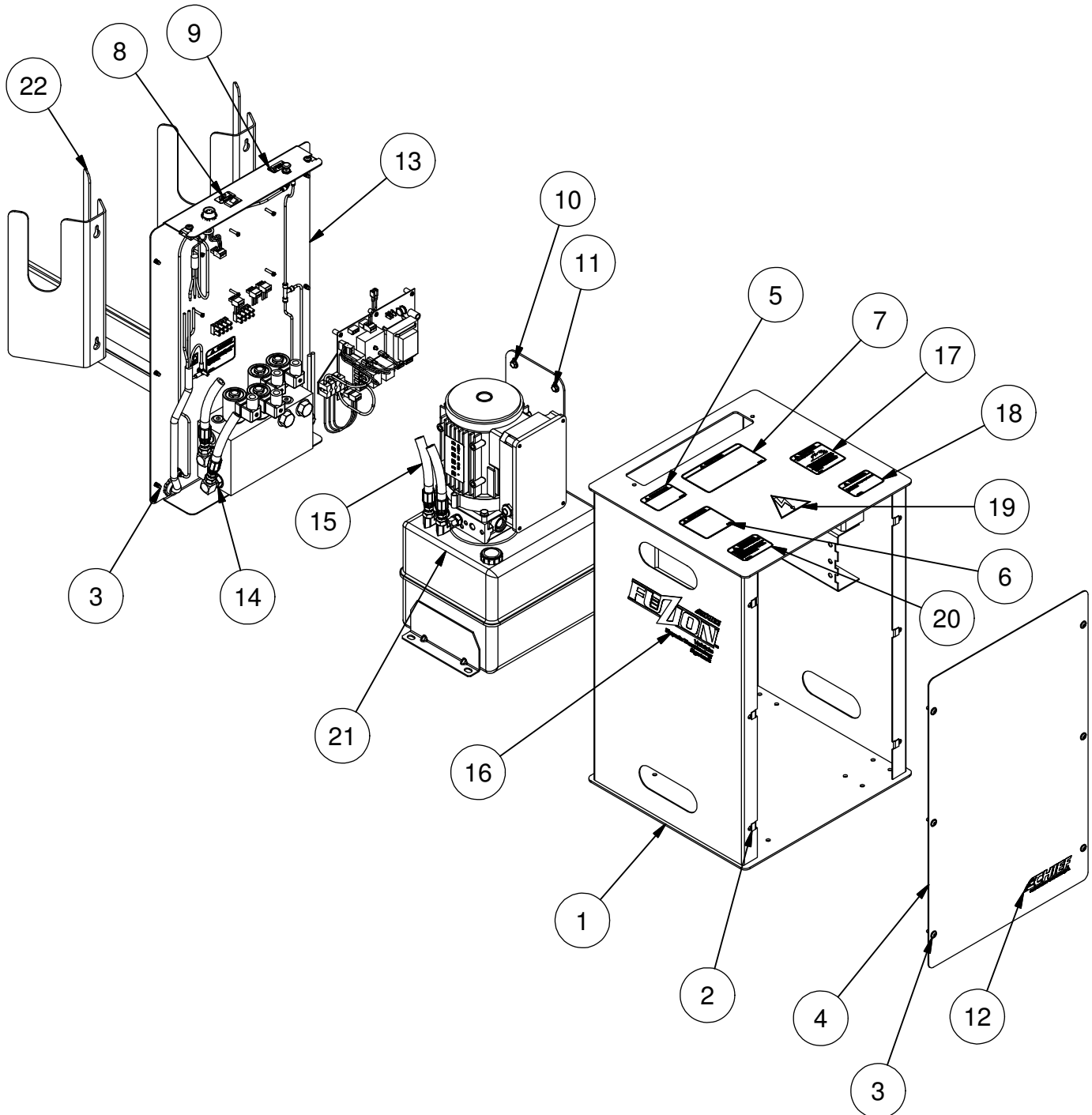
Parts List		
ITEM	P/N	DESCRIPTION
1	450489	Straight Adapter, 8MB-8MJ
2	450448	Hose, -8FJX to 3/8 NPT male x 240" long x 3/8" ID
3	602802	Valve, Auxillary Line 3/8" Straight
4	305722	Connector, Male Flat Face
5	450449	Hose, -6ORB to 3/8 NPT male x 30" long x 3/8" ID

Fuzion Hydraulic Manifold



Parts List		
ITEM	P/N	DESCRIPTION
1	638534	Fuzion Manifold Block
2	638269	Cartridge Valve, 2-Way NO Poppet #10
3	450997	Coil, HydraForce 24 VDC #10
4	638508	FLOW CONTROL .75 GPM
5	638510	FLOW DIVIDER
6	638514	Check Valve - Cartridge Style
7	638537	Check Valve - Cartridge Style
8	638507	Coil, HydraForce 12 VDC
9	305721	Plug, -6ORB Flush Head
10	450999	Plug, -8ORB Flush Head
11	450996	Nut, Cartridge Coil Retainer
12	638231	SV10-28 Cartridge Valve, 2-Way Double Blocking Poppet #10
13	450994	Cartridge Valve, 2way NC Poppet #10

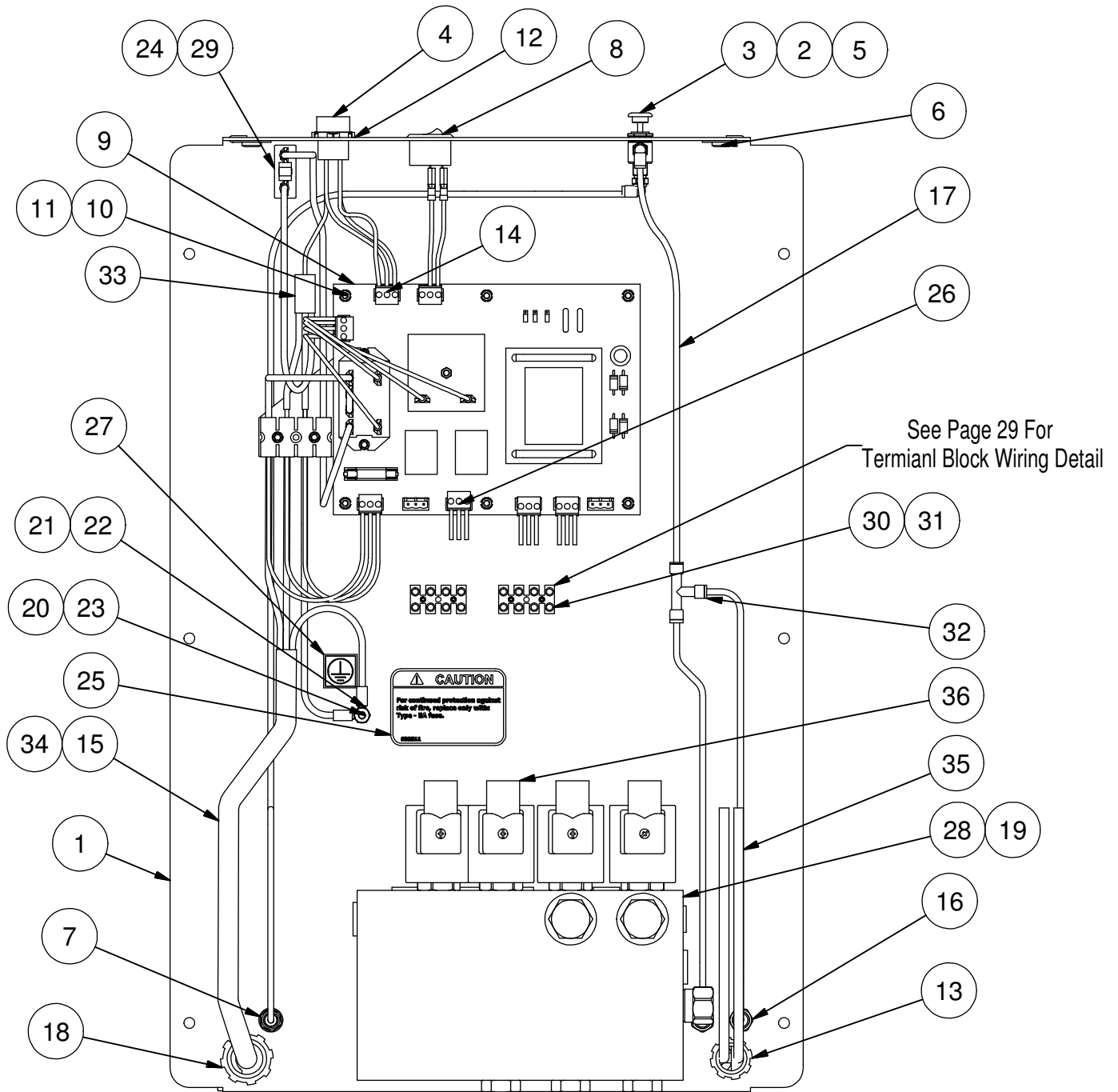
Fuzion Pump Cabinet



Fuzion Pump Cabinet

Parts List		
ITEM	P/N	DESCRIPTION
1	450460	Weldment, E/VHT Cabinet
2	450453	Nut, 1/4-20 NC J Style Clip
3	450459	Screw, 1/4-20 x 3/4" Button Head Torx Plus
4	450466	Panel, E/VHT Pump Cabinet Front
5	692053	LABEL CAUTION LOCK LEVEL IMP-VHT
6	692096	LABEL, CAUTION CROSSMEMBER POSITION
7	692055	LABEL, CAUTION, LIFT SWITCH ON/OFF
8	450057-B	Decal, B of 450057
9	450057-C	Decal, C of 450057
10	707410	Washer, 1/4" Flat
11	706409	Bolt, 1/4-20NC x 3/4" Gr2 Plated
12	788190	DECAL, CHIEF AUTOMOTIVE LOGO
13	638529	Assembly, Rear Panel, Fuzion Cabinet
14	450483	Adapter, -8 ORB to -6 JIC Swivel 90
15	450474	Hose, -6FJX to -6FJX x 30" Long x 3/8" ID
16	638482	Decal, FUZION, Small, Mainframe
17	692001	Decal, Warning - Explosion / Fire Risk
18	692002	Decal, Warning - Below Grade / Floor Level
19	692144	Decal, Warning - High Voltage
20	305094	Decal, Warning - Entering Enclosure
21	OS450451	Assembly, Oil Sistem eVHT Power Unit
22	450469	Bracket, E/VHT Cabinet Hose Holder

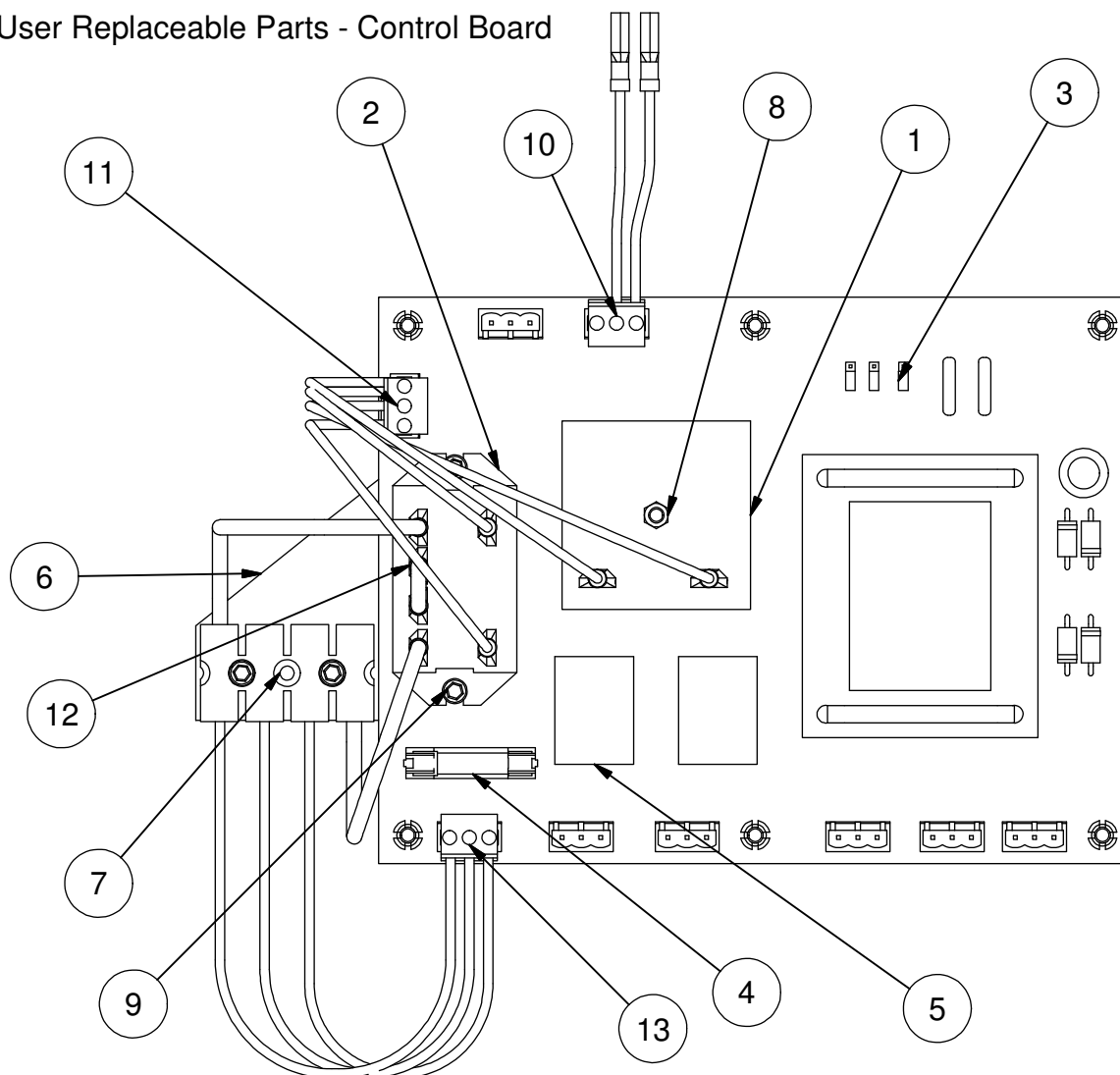
Fuzion Back Panel



Fuzion Back Panel

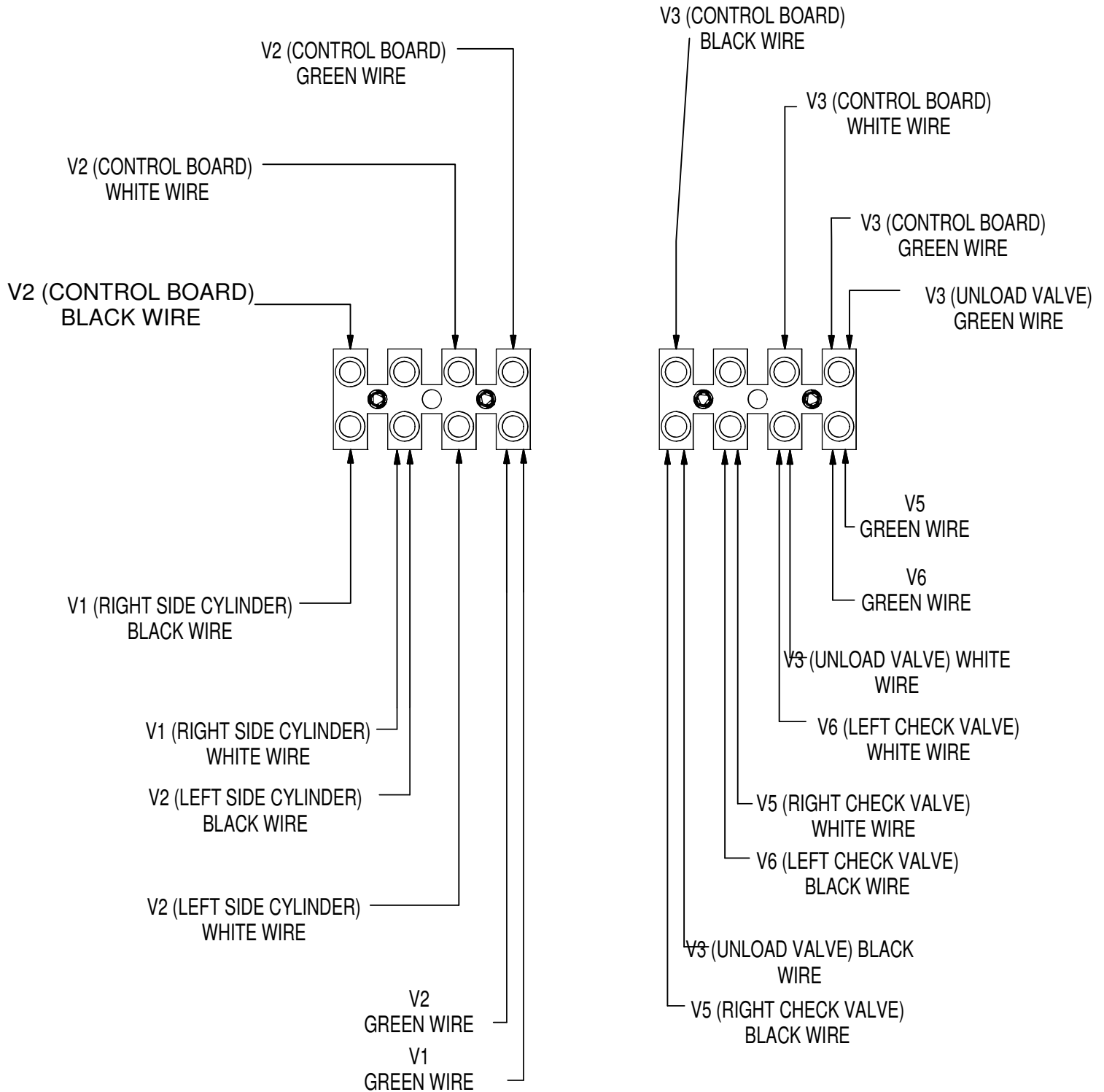
Parts List		
ITEM	P/N	DESCRIPTION
1	638528	Rear Panel, Fuzion Cabinet
2	450883	Normally Closed 3-way Spool Valve
3	450889	BUTTON ACTUATOR / 1/8" STEM
4	620242	Pig-Tail, Female Mini-Line Cord
5	305797	Fitting, 10-32 Microlok, 90 dg
6	450453	Nut, 1/4-20 NC J Style Clip
7	450950	Fitting, 5/32 PTL to 1/4 NPT Female Bulkhead
8	450454	Switch, E/VHT Lift/Tower Rocker
9	638512	Assembly, Fuzion Control Board
10	450982	Screw, 8-32 x 1 Button Head Hex
11	450957	Nut, #8-32 Nylock
12	450979	1/2 Conduit Lock, Tooth Nut
13	798498	STRAIN RELIEF CONNECTOR, 1/2"
14	450963	Connector, 3 Pos header 5.08 Pitch
15	450989	Power Cord, 12-3 SOJ
16	450951	Bulkhead Fitting, 5/32 PTL
17	305848	Tubing, 5/32" Soft Nylon Black
18	692271	STRAIN RELIEF CONNECTOR, 3/4"
19	630635	Bolt, 1/4-20 x 1 Hex
20	796460	Washer, #10, Int. Tooth Lock, Type-A,
21	451232	Screw, 10-24 x 1 Button Head Hex
22	796494	Ring Terminal, #10 Stud 10-12 AWG Insulated
23	796010	Nut, 10-24 Hex Plated
24	638270	Circuit Breaker, Pump Motor, 120V 25A
25	638511	Decal, Caution - Fuse Replacement
26	450978 B	Wire Harness, PCB to Power Block
27	692004	Decal, Ground Symbol
28	638535	FUZION MANIFOLD ASSEMBLY COMPLETE
29	638272	Quick Connect, Female 1/4" x 10-12 Gauge
30	450954	Two-Screw, Four-Position Eurostyle Terminal Strip
31	451122	Screw, #8 x .500" Thread Forming for Plastic
32	450932	Union T, 5/32" Press-to-Lock
33	450989-3'	POWER CORD, 12/3 SJO RAW E-VHT
34	694060	PLUG, INDUSTRIAL GROUNDING
35	638536	DIN PLUG, DIN43650 21' 18GA LEAD
36	305825	DIN PLUG, DIN43650 3' 18GA LEAD

User Replaceable Parts - Control Board

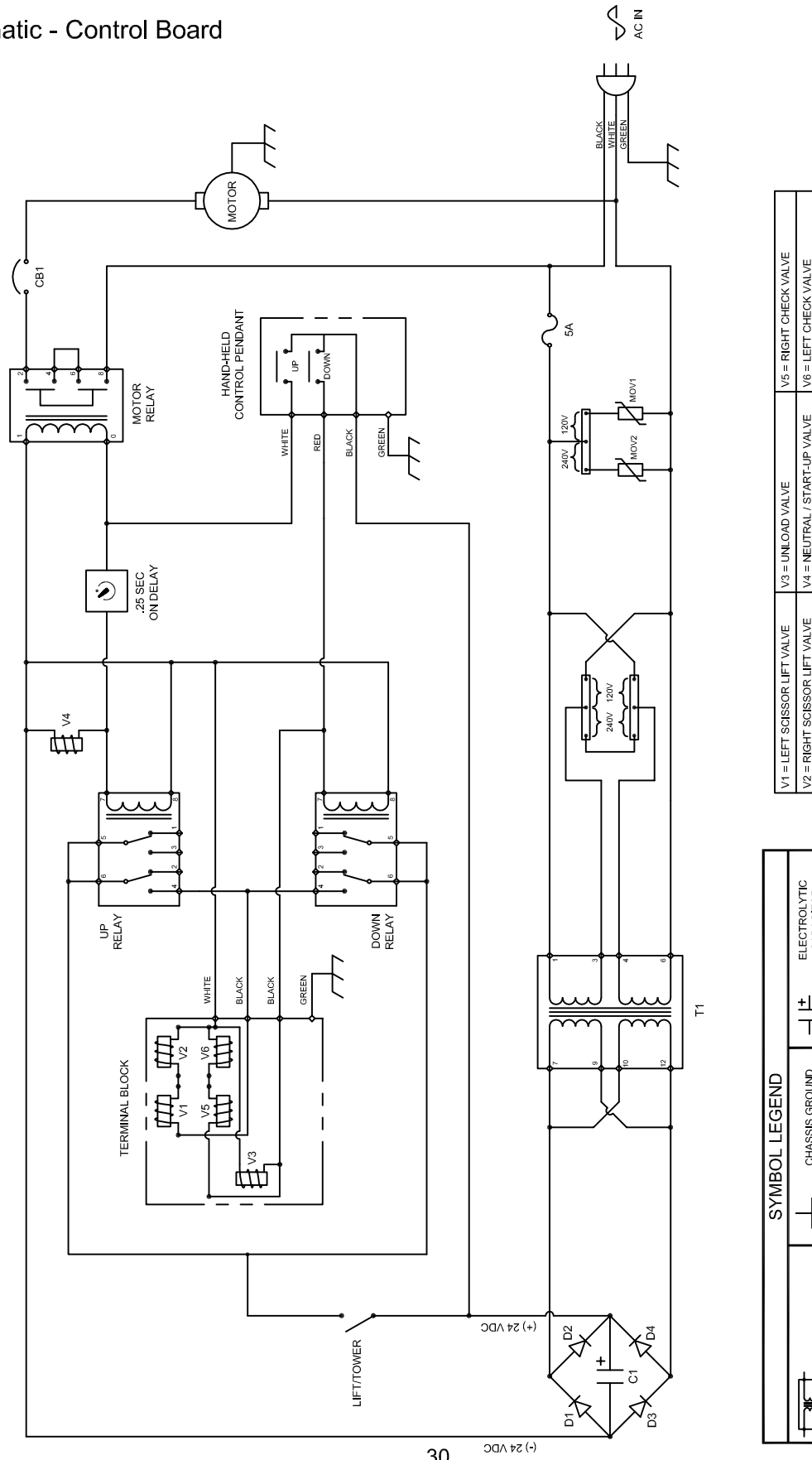


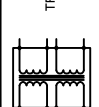
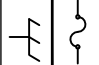
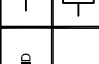






Parts List		
ITEM	P/N	DESCRIPTION
1	450458	Relay, Adjustable Time Delay .25 - 5 Second
2	450970	Motor Contactor, 24VDC
3	450974	SHUNT 2-POS .100" JUMPER
4	794550	FUSE 5 AMP
5	450967	RELAY DPDT 24VDC
6	450975	BRACKET, TERMINAL BLOCK MOUNT
7	450976	TERMINAL BLOCK 4 POS
8	450957	Nut, #8-32 Nylock
9	450060	Screw, #8-32x1/4" Socket Head Cap
10	450980	Wire Harness, PCB to Lift Switch
11	450983	Wire Harness, PCB to Relay
12	450987	Wire, Power Relay Jumper
13	450978	Wire Harness, PCB to Power Block

Terminal Block Wiring Detail



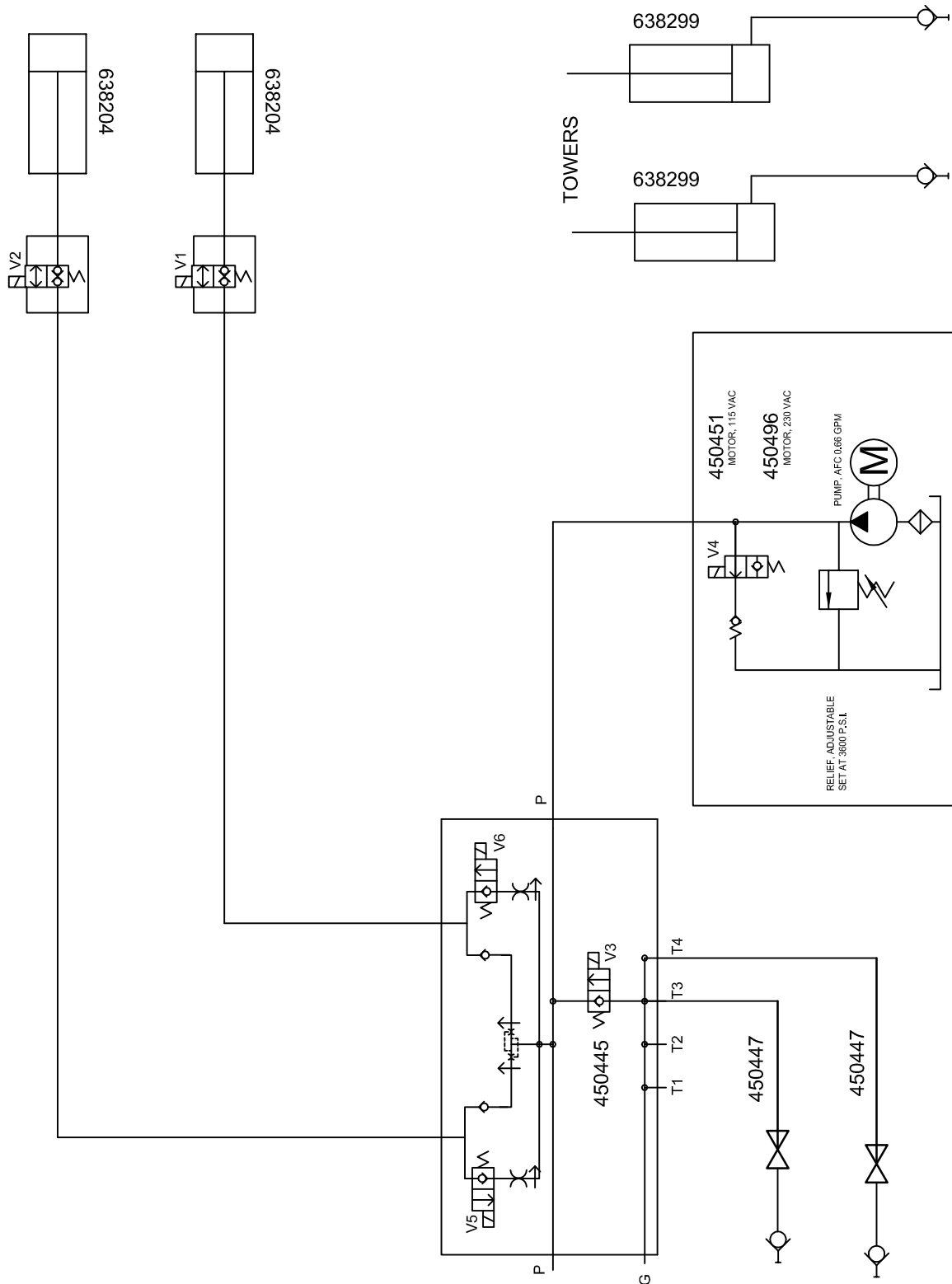
Schematic - Control Board



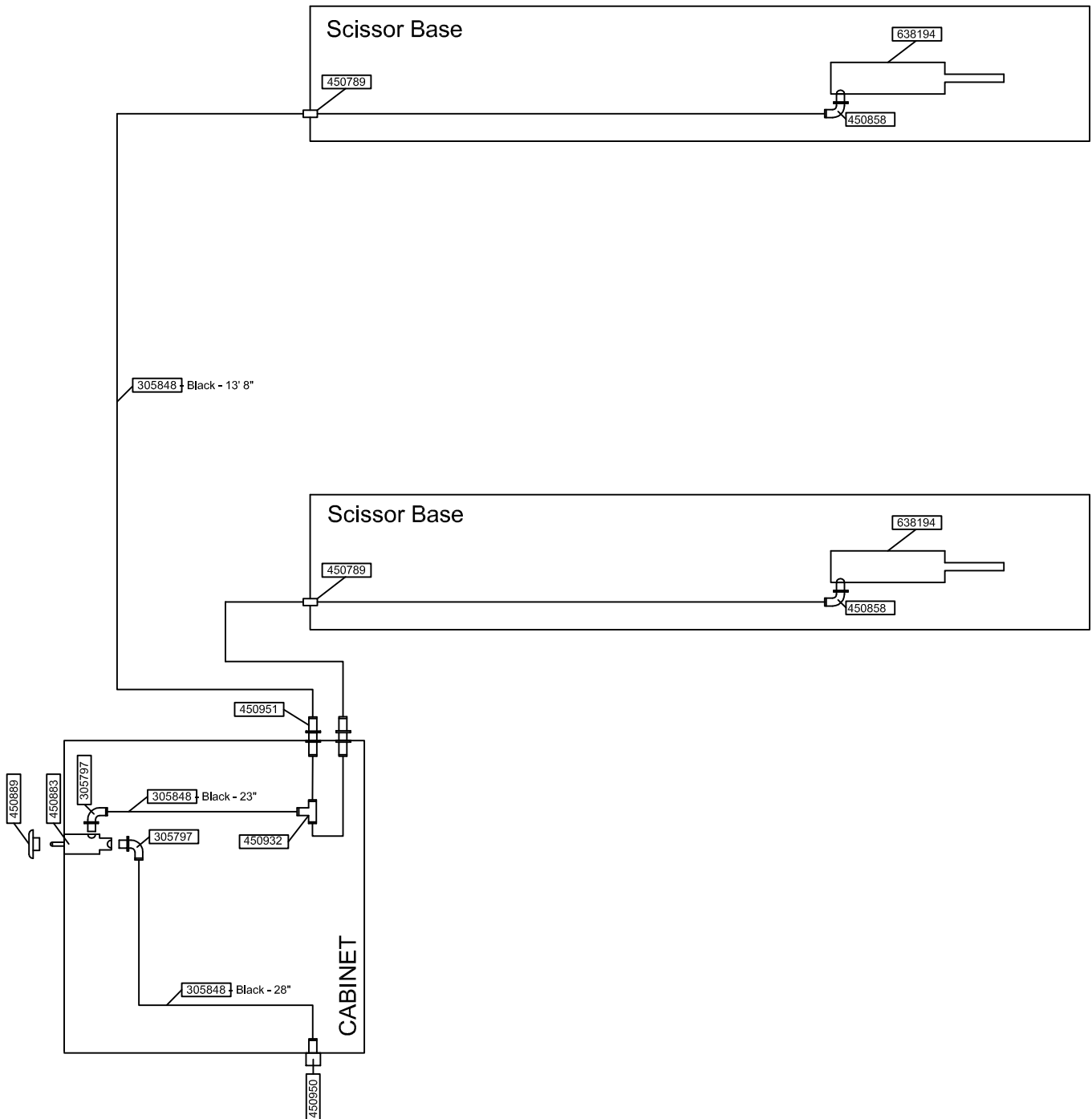
SYMBOL LEGEND	
	TRANSFORMER
	CHASSIS GROUND
	FUSE
	METAL OXIDE VARISTOR
	DIODE
	ELECTROLYTIC CAPACITOR
	TIMER
	CIRCUIT BREAKER
	COIL SOLENOID VALVE

V1 = LEFT SCISSOR LIFT VALVE	V3 = UNLOAD VALVE	V5 = RIGHT CHECK VALVE
V2 = RIGHT SCISSOR LIFT VALVE	V4 = NEUTRAL / START-UP VALVE	V6 = LEFT CHECK VALVE

Hydraulic Schematic



Pneumatic Schematic





P.O. Box 1368
Grand Island, Nebraska 68802-1368
Phone: 308/384-9747
Fax: 308/384-8966

www.chiefautomotive.com

Chief reserves the right to alter product specifications
and/or package components without notice.