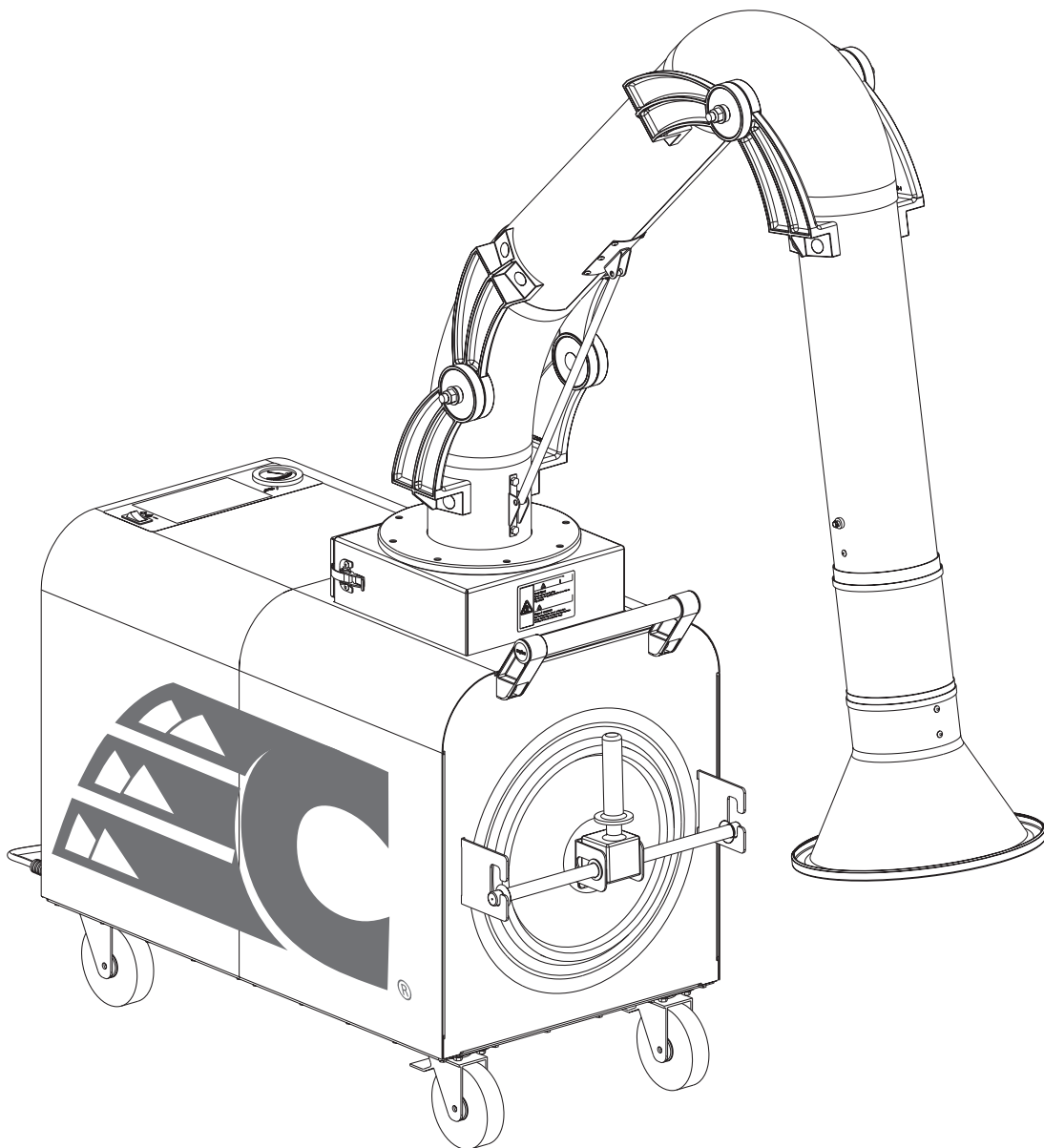




OWNER'S MANUAL

Chief Fume Extractor | CHF1001, 7' Arm Extractor • CHF1002, 10' Arm Extractor



KNOW YOUR EQUIPMENT

READ THIS MANUAL FIRST.

Your weld fume collector should provide many years of trouble-free service. This manual will help you understand the operation and maintenance required to achieve top performance. For quick future reference, complete the system and filter information in the spaces below. Should you need assistance, call the Chief customer service number shown below. To expedite your service, have the following information available when contacting Chief Automotive Technologies.

ORDER #: _____

UNIT MODEL #: _____

UNIT SERIAL #: _____

FILTER PART #: _____

SYSTEM ACCESSORIES:

INSTALLATION DATE: _____

CHIEF CUSTOMER SERVICE

1-800-445-9262

TABLE OF CONTENTS

	Page
1.0 IMPORTANT NOTICE	1
2.0 INTRODUCTION	1
2.1 DESCRIPTION AND OPERATION	1
3.0 PRODUCT SAFETY GUIDELINES	1
4.0 SYSTEM SPECIFICATIONS	2
5.0 INSTALLATION	2
5.1 EQUIPMENT OFF LOADING AND INSPECTION	2
5.2 INSTALLATION SAFETY	2
5.3 EXTRACTION ARM ASSEMBLY	2
5.4 ELECTRICAL INSTALLATION	3
6.0 UNIT OPERATION	4
6.1 POWER SWITCH	4
6.2 PRESSURE GAUGE	4
6.3 LOCATING EXTRACTION HOOD	4
6.4 EXTRACTION ARM DAMPER	5
6.5 START-UP OPERATION	5
6.5.1 HOOD ACCESSORY KITS	5
6.6 SHUT-DOWN AND STORAGE	5
7.0 USER SERVICING INSTRUCTIONS	5
7.1 FILTER REPLACEMENT	5
7.2 ADJUSTING EXTRACTION ARM JOINTS	6
7.3 SPARK ARRESTOR	7
7.4 MOTOR SUPPLEMENTARY PROTECTION	8
7.5 ROUTINE MAINTENANCE	8
8.0 TROUBLESHOOTING GUIDE	9
9.0 REPLACEMENT PARTS	10
9.1 FUME EXTRACTOR REPLACEMENT PARTS	10
9.2 EXTRACTION ARM REPLACEMENT PARTS	11
10. WIRING DIAGRAM	12
WARRANTY	

SAFETY PRECAUTIONS

We have provided many important safety messages in this manual on your W Series Fume Extraction Equipment. Always read and obey all safety messages.



This is the safety alert symbol.

This symbol alerts you to potential hazards that can kill or hurt you and others. All safety messages will follow the safety alert symbol and the word “DANGER” “WARNING” or “CAUTION”. These words mean:



Indicates a hazardous situation which, if not avoided, will result in death or serious injury.



Indicates a potentially hazardous situation which, if not avoided, could result in death or serious injury.



Indicates a potentially hazardous situation which, if not avoided, may result in minor or moderate injury.



CAUTION used without the safety alert symbol indicates a potentially hazardous situation which, if not avoided, may result in property damage.

IMPORTANT SAFETY INSTRUCTIONS



To reduce the risk of fire, electric shock, or injury when using your air cleaner, follow these basic precautions:

- Use this unit within the manner intended by the manufacturer. If you have questions contact the manufacturer.
- Before servicing or cleaning the unit, switch power off at the control panel and lock the service disconnecting means to prevent power from being switched on accidentally. When the service disconnecting means cannot be locked, securely fasten a prominent warning device, such as a tag, to the service panel.
- Wear protective clothing and safety glasses when operating or servicing the fume collector.
- Use proper lifting and rigging equipment to install this equipment.
- Replace all access panels before operating.
- Electrical connections should only be made by qualified personnel, and be in accordance with local and national codes along with other applicable regulations.
- Keep flammable materials and vapors, such as gasoline, away from the weld fume collector.

WARNING: NOT SUITABLE FOR USE WITH SOLID-STATE SPEED CONTROLS

SECURITE

Nous avons fourni des messages de sécurité importants dans ce manuel sur votre W-Series de matériel d'extraction des fumées. Toujours lire et respecter tous les messages de sécurité.



C'est le symbole d'alerte de sécurité.

Ce symbole vous avertit d'éventuels dangers pouvant tuer ou vous blesser et d'autres. Tous les messages de sécurité suivront le symbole d'alerte de sécurité et le mot "DANGER" "ATTENTION" ou "ATTENTION". Ces mots signifient:



Indique une situation dangereuse qui, si elle n'est pas évitée, entraînera la mort ou des blessures graves.



Indique une situation potentiellement dangereuse qui, si elle n'est pas évitée, pourrait entraîner la mort ou des blessures graves.



Indique une situation potentiellement dangereuse qui, si elle n'est pas évitée, en mai résultat blessure mineure ou modérée.



ATTENTION utilisé sans le symbole d'alerte de sécurité indique une situation potentiellement dangereuse qui, si elle n'est pas évitée, mai entraîner des dommages matériels.

CONSIGNES DE SECURITE



To reduce the risk of fire, electric shock, or injury when using your air cleaner, follow these basic precautions:

- Utilisez cette unité sur la façon prévue par le fabricant. Si vous avez des questions, contactez le fabricant.
- Avant l'entretien ou de nettoyage de l'unité, passer à la mise hors tension de service et de verrouiller le panneau de service de déconnecter les moyens d'empêcher le pouvoir de la mise en marche accidentellement.
- Lorsque le service des moyens de déconnexion ne peut pas être verrouillé, fixez solidement un dispositif d'avertissement, comme un tag, au service panel.
- Porter des vêtements protecteurs et des lunettes de sécurité lors de la manipulation ou le service le collecteur de poussières.
- Utiliser des équipements de levage et de gréage pour installer votre équipement.
- Remplacer tous les panneaux d'accès avant l'utilisation.
- Les connexions électriques ne doivent être effectués par un personnel qualifié, et d'être en conformité avec les codes locaux et nationaux ainsi que d'autres règlements applicables.
- Gardez les matériaux et les vapeurs inflammables, tels que l'essence, loin du collecteur de poussière.

AVERTISSEMENT : NE CONVIENT PAS À DES RÉGULATEURS DE VITESSE À SEMI-CONDUCTEURS.

1.0 IMPORTANT NOTICE

This manual contains important safety information and precautionary measures. It is impossible to list all potential hazards associated with weld fume collection systems across unique applications. Proper use of the equipment should be discussed with Chief Automotive Technologies or your local Chief representative. Operating personnel should be aware of, and adhere to, the most stringent safety procedures.

2.0 INTRODUCTION

Thank you for selecting Chief fume extraction equipment to assist you in your commitment to a clean and safe working environment. We trust that in purchasing this Chief product you have recognized our commitment to providing air cleaning solutions engineered for each pollution control need which are manufactured to the highest quality standards. If at any time you have questions about the application or operation of your equipment, please do not hesitate to call your local Chief representative, or visit our website at www.chiefautomotive.com for more information.

2.1 DESCRIPTION AND OPERATION

The fume extractor is designed to provide high efficiency filtration of fume generated during welding processes. Contaminants are captured at the source through the extraction arm hood, and then through a fire retardant ProTura® nanofiber filter, where they are removed from the air stream. Clean air is then recirculated back to the working area. Figure 1 illustrates the basic operation and identifies the key components of the system.

Over time, collected fume builds up on the filter surface, increasing the pressure loss across the filter. This increased pressure causes a reduction in airflow and diminishes the extraction capacity of the system. A pressure gauge located on the unit monitors the pressure and indicates when it is time to clean or replace the filter.

When the pressure drop remains consistently above 4", or the generated airflow can no longer suitably capture the weld fume, the filter should be replaced.

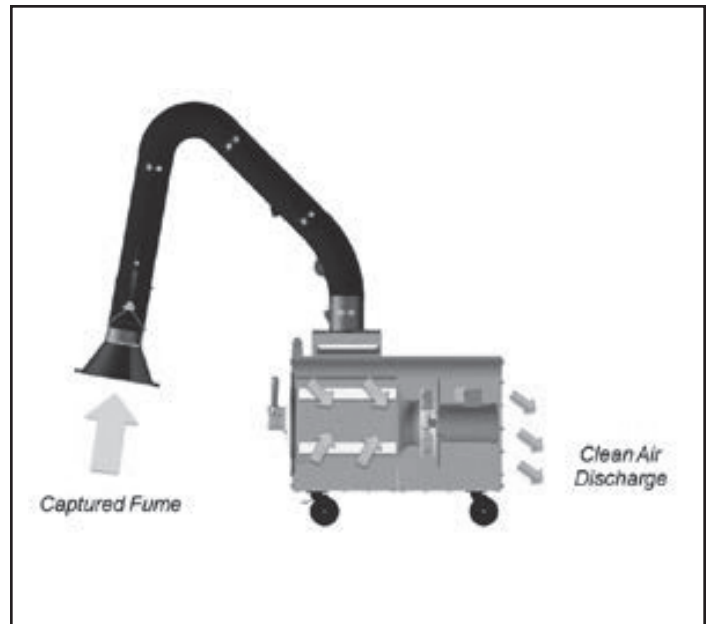


FIGURE 1
General Product Operation

3.0 PRODUCT SAFETY GUIDELINES

! DANGER

This fume collector intended for the collection of welding fume and smoke only. These systems are not intended to collect grinding dust, plasma cutting or other types of dust by-products from other industrial processes.

- When collecting emissions from spark-producing processes, care must be taken to reduce potential fire hazards. Experts in the field of fire extinguishing equipment should be consulted for recommendations concerning proper fire detection and suppression systems. Consult your insurance underwriter, NFPA (National Fire Protection Association) standards and your local fire authorities to determine the requirements for proper fire safety.
- Read and understand all Material Safety Data Sheets (MSDS) applicable to the processes associated with this product operation.
- Disconnect all power prior to servicing or maintaining the equipment.
- The system should not be powered or operated without an extraction arm (or approved hood assembly) installed.
- Refer to all applicable local, state and federal guidelines pertaining to the disposal of used filters.

4.0 SYSTEM SPECIFICATIONS

Fume Extractor Unit Specifications							
Model	Input Power	Motor Power	Nominal Airflow	Filter Area	Sound Level at 5 FT (dBA)	Weight	Dimensions
	VAC / PH / HZ						L x W x D
	FLA (Amps)						IN (CM)
Chief Fume Extractor	115/1/60 (11.8)	1 (0.75)	750 (1,274)	200 (18.6)	71.5	260 (118)	40.4 (102) x 21.0 (53) x 33.1 (84)

5.0 INSTALLATION

The fume extractor is portable system that can be configured with multiple accessories to serve various application requirements. Please refer to the proper section when installing your system.

5.1 EQUIPMENT OFF LOADING AND INSPECTION

Upon receipt of your unit, visually inspect for any shipping damage. A damaged carton indicates that the equipment may have received rough handling during shipping that may have caused internal damage which could cause your system to not function properly. Notify your delivery carrier and enter a claim if any damage is found.

It is recommended to leave the unit secured to the shipping skid if the use of a skid loader or fork truck is required to deliver the unit to the point of delivery or installation. It is not recommended to pick the fume extractor up with a fork truck after it has been removed from the skid.

5.2 INSTALLATION SAFETY

This fume extractor consists of an extraction arm and mobile fume extractor on casters and requires some assembly before operation. Please review and consider the following safety information prior to installing and operating the fume extractor.

WARNING

- The system should not be powered or operated without the extraction arm properly installed on the system.
- Do not place the system on a sloped surface or in an area where the unit will be prone to tipping.
- Consideration should be given to routine product maintenance, such as cleaning, filter replacement and contaminant disposal.
- The system should be moved using the push bar located on the front of the unit. The extraction arm should not be used to pull or drag the unit.
- Make sure that the front casters are in the locked position prior to operating the system or moving the extraction arm.

5.3 EXTRACTION ARM ASSEMBLY

See Figure 2 and Figure 3 for portable extraction arm assembly instructions and part numbers. It is recommended that two people perform the installation of the arm onto the unit. Note that it may be easier to complete the assembly of the extraction arm with the swivel base already installed onto the fume extractor. Accessories such as the hood mounted arc sensor or light kit may also be easier to install prior to completing assembly. Refer to each option's installation instructions for additional information.

1. Locate mounting hardware in loose parts kit box. Open hardware bag and identify proper tools for mounting the arm onto the unit.
2. Lift and set arm base assembly onto mounting surface of unit. Install hardware into half of the mounting holes. Do not completely tighten at this point. Cut and remove the two the zip ties on the base.
3. Install hardware and tighten all of the hardware to secure the base onto the unit. The arm is not fully supported at this point so ensure to continue to support arm such that it does not fall onto personnel or equipment in the area.

4. Locate gas spring and spring mounting pins in loose parts kit box. The mounting pins should be taped to the lid of the box. Ensure that the pin and snap rings are within reach for installation.
5. Install the gas spring in orientation shown onto the base tube spring bracket. Install spring pin and retainer to secure the spring to the base tube spring bracket.
6. Lift arm and align the gas spring with the base assembly spring bracket. Install spring pin and retainer to secure the spring to the base assembly spring bracket.
7. At this point check the arm for proper motion. The arm should rotate on the base freely. The torques at each joint are pre-set to hold the arm in position throughout the full range of motion. The arm movement can be adjusted as necessary to better fit your process.

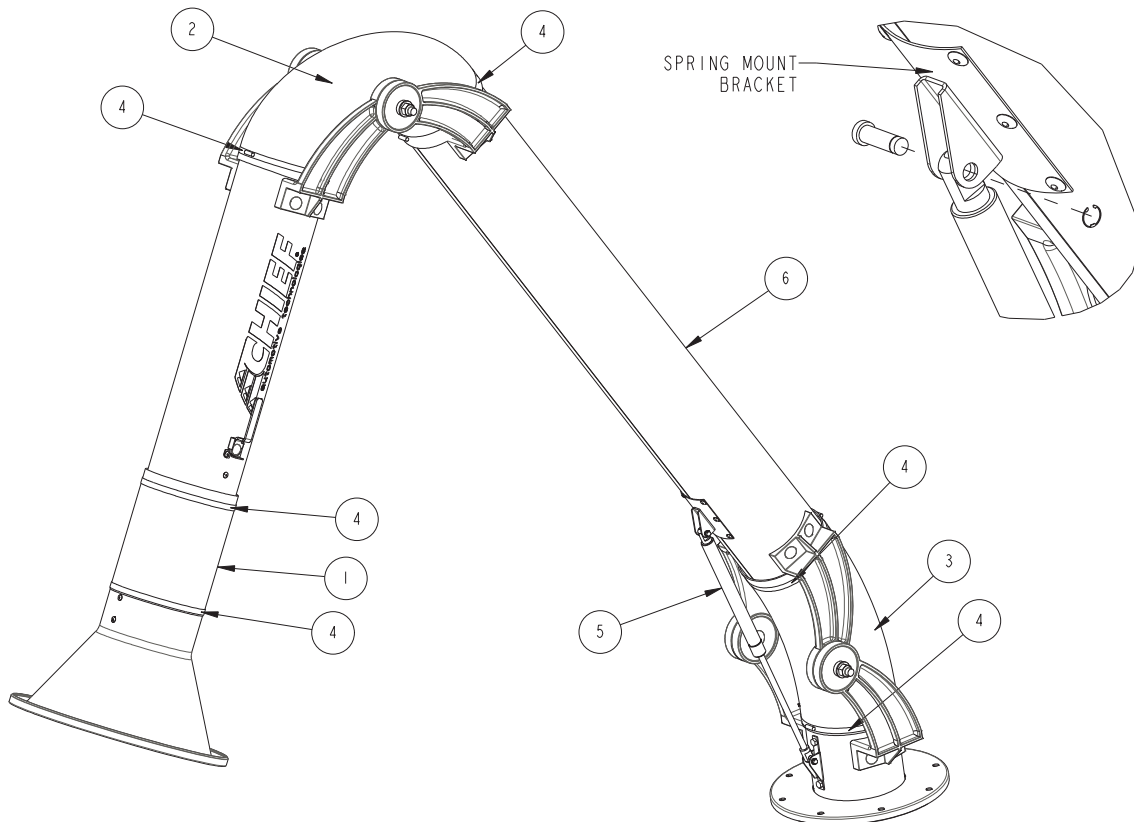
8. Install the flex duct onto the base and middle joints using the split clamps provided. The middle and base joints utilize the 24" and 30" pieces respectively.

5.4 ELECTRICAL INSTALLATION

! DANGER

All electrical work should be performed by a qualified electrician in accordance with local electrical codes. Disconnect electrical power before installing or servicing any electrical component.

The fume extractor require a power supply connection of 115 volt AC, single phase, 60 Hz, 15 or 20 amp individual branch circuit protected by circuit breakers or time delay fuses. The unit comes equipped with a 20 foot power cord, which must be connected to a receptacle meeting the specifications identified above.



61-10081

FIGURE 2
Extraction Arm Assembly and Part

6.0 UNIT OPERATION

6.1 POWER SWITCH

Each fume extractor has a main power switch that controls the operation of the system blower. The main power switch is located on the top of the unit on the clean air discharge side.

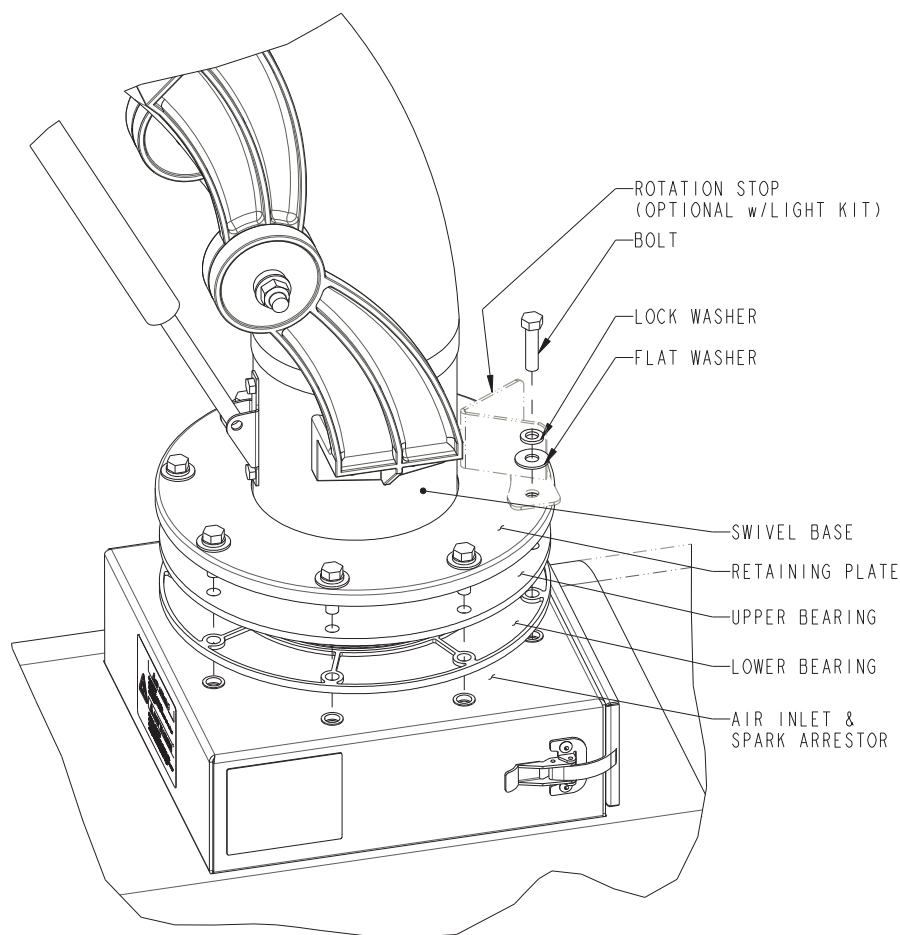
6.2 PRESSURE GAUGE

The pressure gauge monitors the pressure drop across the filter and indicates when it is time to replace or clean the filter. The gauge is equipped with a color-coated indicator that alerts when action is required. When the gauge reaches 4" W.C., or when airflow no longer can adequately extract fumes, it is recommended to change or clean the filter.

6.3 LOCATING EXTRACTION HOOD

! WARNING

- Do not place the system on a sloped surface or in an area where the unit will be prone to tipping.
- The system should be moved using the push bar located on the front of the unit. The extraction arm should not be used to pull or drag the unit.
- Make sure that the front casters are in the locked position prior to operating the system or moving the extraction arm.



61-10082

FIGURE 3
Extraction Arm Assembly to Fume extractor (needs updated for VSG arrangement)

The position of the extraction hood is critical to the overall performance of the fume extraction system. The extraction arm and hood are designed to provide maximum flexibility and convenience in operation. The 360° handle on the circumference of the hood should be used to move the arm. Do not use the arm to move or locate the fume extractor. Position the hood on the opposite side of the weld target, approximately 10 – 14" from the fume source and at a 45° angle relative to the welding surface, to draw the generated fume away from the worker and avoid any airflow impedence. Minimizing the bends present in the extraction arm will reduce losses and improve extraction performance. Be aware and minimize cross drafts or air movement that may impact fume extraction such as cooling fans, HVAC systems or open doors / windows.

6.4 EXTRACTION ARM DAMPER

Each extraction arm is equipped with an airflow damper that can be used to control the airflow. Controlling the airflow may be required to avoid disruption of the arc gas during the welding process. The damper is controlled by turning the handle of the right side of the upper tube assembly. When the handle is perpendicular to the duct, the damper is closed and open when in parallel.

6.5 START-UP OPERATION

Roll the unit to the approximate location so that the extraction arm can be proximate to the welding fume source as described in Section 6.3. When in position, engage the locking brakes located each front caster (wheel) to secure the unit. Unwrap the power cord and connect to a suitable electrical receptacle per Section 5.5. Adjust the fume extraction arm and hood in the proper position and move the main power switch to the On position to begin unit operation. Adjust the hood location and damper position as necessary to achieve proper fume extraction performance.

6.5.1 HOOD ACCESSORY KITS

If the hood switch and light kit option has been installed, both the main power switch and the hood switch will need to be on for the unit to operate. For an arc sensor kit options that was installed for more automated operation, place both the hood switch and main power switch in the On position and the unit will turn on once a welding arc is sensed and will remain on for approximately 1 minute before shutting down if additional arcs are not sensed

6.6 SHUT-DOWN AND STORAGE

To shut the fume extractor off, place the main power switch into the off position. Unplug the power cord and wrap the cord to the brackets located on the discharge side of the unit. Compress the extraction arm into a compact position and pivot above the fume extractor unit. Release the front caster locking brakes and move the unit to the storage location.

7.0 USER SERVICING INSTRUCTIONS

DANGER

- Disconnect electrical power prior to servicing equipment.
- Wear appropriate protective clothing.
- Collected particulate may be hazardous. Consult proper authorities for handling and disposal.
- Disposal of collected particulate must be according to federal, state and local regulations and all appropriate authorities.

7.1 FILTER REPLACEMENT

CAUTION

- Removing the filters may expose you to hazardous contaminants. Take all necessary precautions including protective clothing such as eye protection and gloves.
- Follow all local safety and environmental codes in disposal of the accumulated particulate.

ProTura Nanofiber filters are the only replacement filters which will provide the highest level of performance expected from the fume extractor. Replacement cartridge filters should be ordered when the differential pressure is consistently above 4" w.g or system airflow is inadequate to suitably capture and control the welding fume.

1. Read and follow caution instructions in box above before servicing your unit and refer to Figure 4 for additional instruction.
2. Tap the metal surface of each filter access door to dislodge collected particulate from the inner door gasket. Pull the filter access door handle away from the Fume extractor until the handle makes a 90° angle with the door cover. The filter access door is now in an unlatched position. Lift the filter access door upward until the door rods clear the side support brackets and pull the door away from the Fume extractor. Tilt the door cover away from the Fume extractor once free from the support brackets to trap any dust on the inside of the filter access door. Dispose of dust into a suitable container. Place filter access door in a safe place.
3. Move filter from side to side to break the gasket seal between filter and tubesheet (interior filter sealing surface). Rotate the filter 180° to allow the dust on top of the cartridge filter to fall into the bottom of the fume extractor cabinet.

4. Slide the filters out of the Fume extractor and transfer to a suitable disposal container.
5. Inspect the tubesheet and make certain the gasket sealing area is free of dust to ensure proper sealing of the new filter. Make certain the area is dry after the cleaning process is complete.
6. Review internal cabinet including the bottom surfaces and on top of the inlet baffle for accumulated material. Remove any accumulated material manually or using a vacuum suitable for the collected contaminant.
7. Install the new ProTura Nanofiber cartridge into the filter compartment. The filter is symmetric and can be installed with either end inserted first.
8. Refer to Figure 4. With filter fully inserted into the fume extractor, align with door rod support brackets on the Fume extractor. Door handle must be placed at a 90° angle to filter access door prior to placing the door cover plate support rod in the support brackets. The flat surface of the door handle should

be facing downward. To close the filter access door, push the door handle upward, toward the unit. The filter access door handle must be in a perpendicular orientation to door surface prior to being closed. A flat solid section of door handle will be visible when door assembly is in the properly closed position. If cam surface of the door handle is visible, the filter door assembly has been improperly installed.

7.2 ADJUSTING EXTRACTION ARM JOINTS

Periodically, the extraction arm joints may require adjustment to either tighten or loosen the movement to better fit your process. Each joint has friction disks, which assist in controlling the motion of the arm that can be adjusted by modifying the bolt tension at each respective joint.

To adjust the joint assemblies, simply tighten or loosen the nylon lock nuts to the desired level of torque. The tighter the nut is turned the higher the resultant friction is created. For the elbow joints it is best to adjust the two nuts by the same amount. Small adjustments are

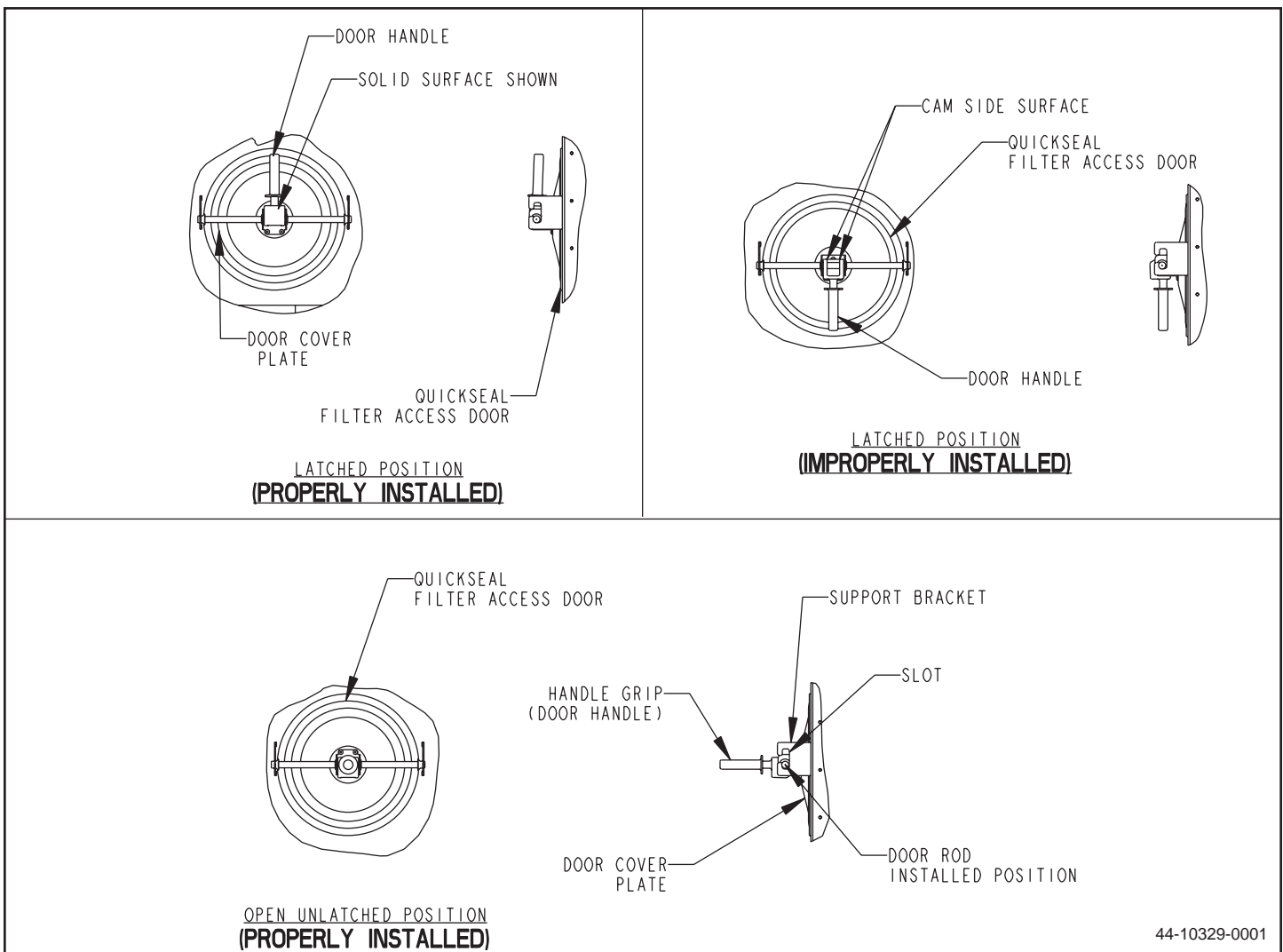


FIGURE 4
Filter Door Installation

recommended to fine tune the desired movement.

To adjust the hood joint swivel assembly, follow the same steps as above but first retract the flexible duct to gain access to the hood joint assembly.

7.3 SPARK ARRESTOR

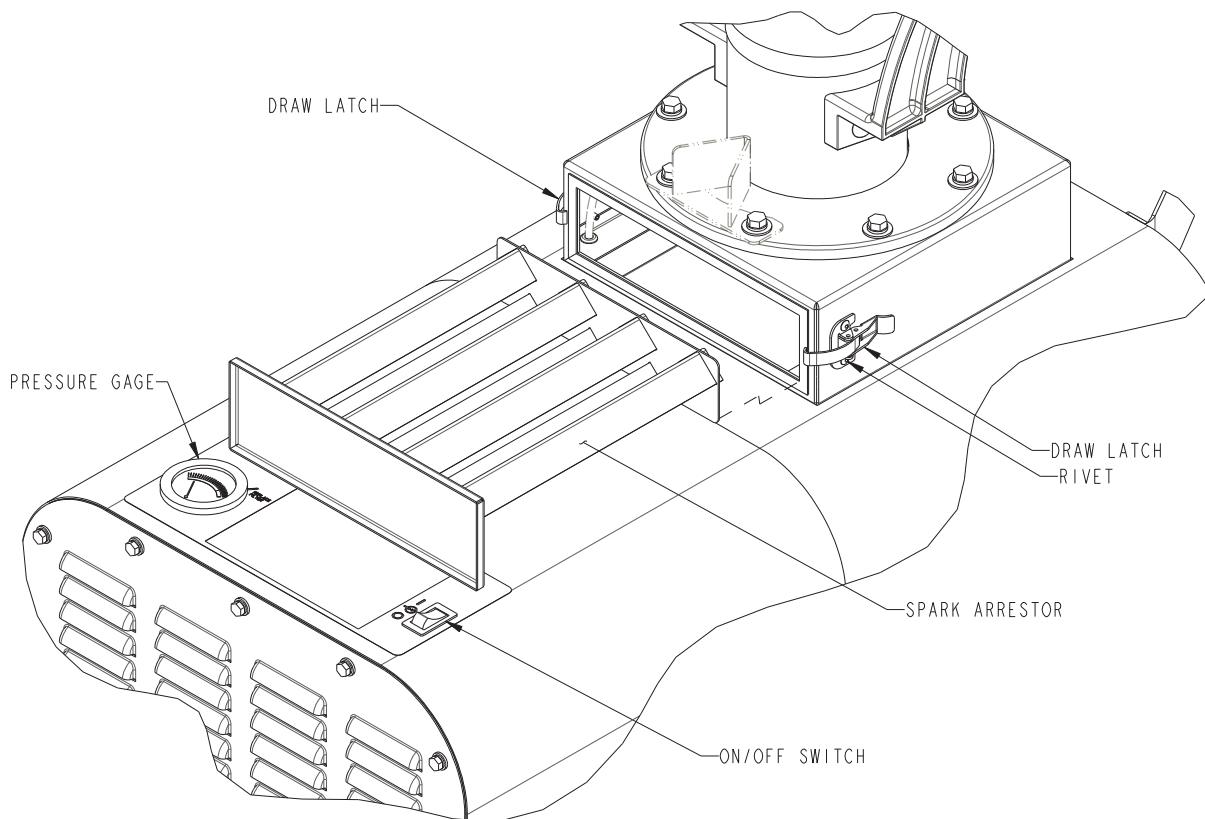
⚠ CAUTION

- Removing the spark arrestor may expose you to hazardous contaminants. Take all necessary precautions including protective clothing such as eye protection and gloves.
- Follow all local safety and environmental codes in disposal of the accumulated particulate.

An impingement spark arrestor is located at the inlet of the fume extractor immediately below the base of the extraction arm. During operation, spark embers or large particulate may accumulate on these baffles. The baffles should be inspected and accumulated material should be removed on a regular basis.

To inspect the baffles, unhook the two draw latches located on the left and right side of the box just below the inlet and pull the spark arrestor assembly towards the discharge side of the fume extractor. Clean the surfaces and dispose of any collected material.

Replace the spark arrestor assembly back into the unit and engage each draw latch. Ensure that the assembly is flush against the gasket material and compressed when latches are closed.



61-10083

FIGURE 5
Spark Arrestor Maintenance

7.4 MOTOR SUPPLEMENTARY PROTECTION**⚠ WARNING**

- Disconnect the power prior to servicing the equipment.

The fume extraction units are equipped with a manually resettable, supplementary protector (circuit breaker) which provides an additional layer of electrical protection to the required branch circuit protection. The protector is located in the clean air plenum of the unit mounted directly below the motor/blower assembly. To reset the circuit breaker, remove the louvered discharge panel to gain access and then flip the breaker switch back to the closed setting.

7.5 ROUTINE MAINTENANCE**⚠ WARNING**

- Disconnect electrical power prior to servicing equipment.
- Take all necessary precautions including protective clothing such as eye protection, ear plugs and gloves..

Daily Items:

- Check filter pressure gauge and verify airflow is adequate to control fume generation. Replace or clean filter if necessary.
- Verify that extraction arm moves freely and also holds desired position. Adjust joints as necessary

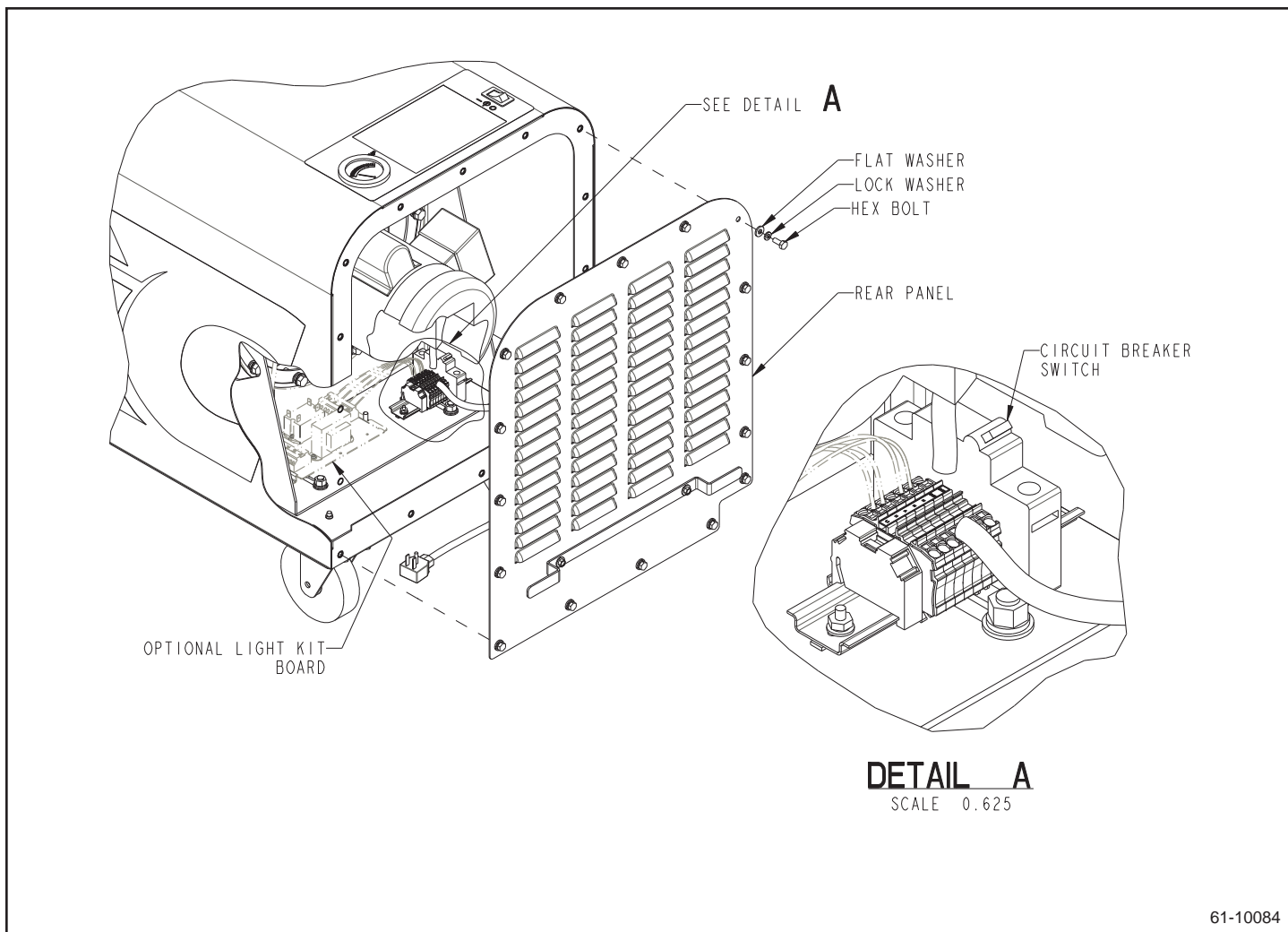


FIGURE 6
Circuit Breaker Detail

Quarterly Items:

- Verify that the serial and warning labels are all readable and undamaged. Clean or replace as required.
- Inspect the spark arrestor for any accumulated material or fume and clean as necessary.
- Clean and remove any fume build up from the interior surfaces of the fume extractor and arm using a suitable vacuum or with warm water and detergent.

Semi-Annual Items:

- Remove filter and clean interior surfaces of filter cabinet.
- Inspect the extraction arm swivel base. Verify smooth rotation and that all mounting hardware is
- Inspect the extraction arm swivel base. Verify smooth rotation and that all mounting hardware is secure.

8.0 TROUBLESHOOTING GUIDE

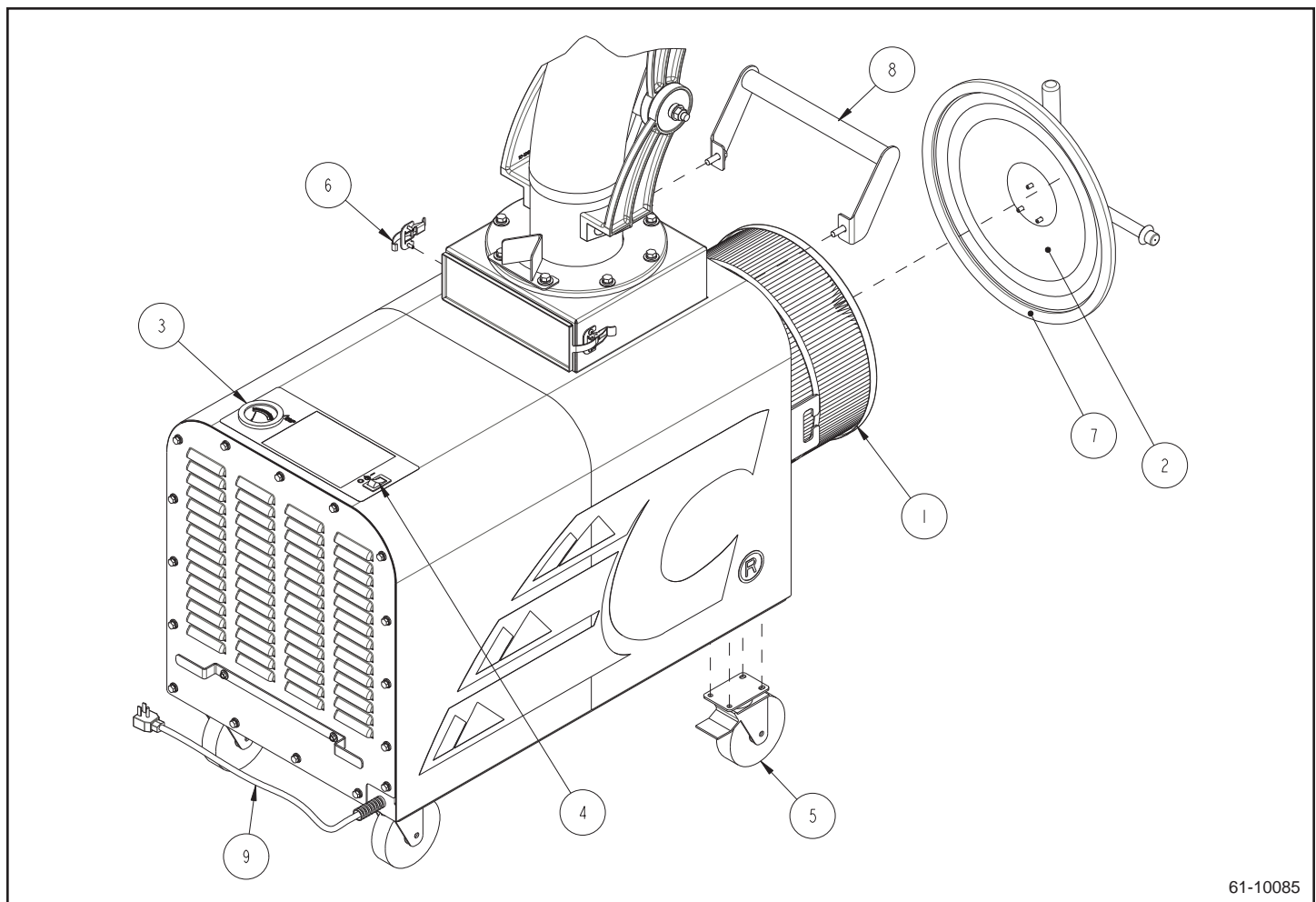
PROBLEM	POSSIBLE CAUSE	RECOMMENDED SOLUTIONS
Extraction Arm Not Holding Position	Tension on joints has loosened.	Adjust the arm joints (see Section 7)
	Support spring is damaged or worn.	Inspect gas spring and repair, replace as necessary.
Arm Does Not rotate	Base swivel bearing was installed incorrectly or has been damaged or worn.	Review installation details or inspect the bearing surfaces for debris or damage.
Decreased Air Flow at Hood	Extraction arm damper is closed.	Open or adjust damper.
	Pressure drop across filter.	Clean or replace filter.
	Extraction arm is leaking.	Verify flexible duct is properly sealed.
	Extraction arm obstructed.	inspect and remove any debris which may be lodged within the arm.
	Spark arrestor has obstruction.	inspect and clean if necessary.
System Will Not Turn On	Power connection.	Verify that the unit is connected to the proper power supply.
	Supplementary protector tripped.	Reset the supplementary protector (see section 7.3).
Blower Will Not Get Up to Speed or Stay running	power supply.	Check the supply fuse or breaker and verify it is properly rated for use.
	Supplementary protector tripped.	reset the supplementary protector (see section 7.3).
	Motor or blower damage.	inspect the blower wheel and motor for damage or excessive vibration.
Fume bypass or leaking is present.	Filter damage.	inspect filter for any damage to the media. replace if needed.
	Gasket damage.	inspect filter and drawer gasket for damage. replace if needed.
	Filter not installed correctly.	Verify that the filter is properly seated and access hatch is securely fastened.

9.0 REPLACEMENT PARTS

9.1 FUME EXTRACTOR REPLACEMENT PARTS

Reserved space for fume extractor replacement parts table to be created by VSG.

Item Number	Part Number	Description
1	CHF4001	Replacement Cartridge Filter
2	CHF1405	Filter Door Assembly
3	CHF1406	Pressure Gauge
4	CHF1407	On / Off Switch
5	CHF1408	Front Swivel Caster
6	CHF1415	Spark Arrestor Door Clamp
7	CHF1416	External Gasket, Filter Door
8	CHF1417	Push/Pull Handle
9	CHF1418	Power Cord

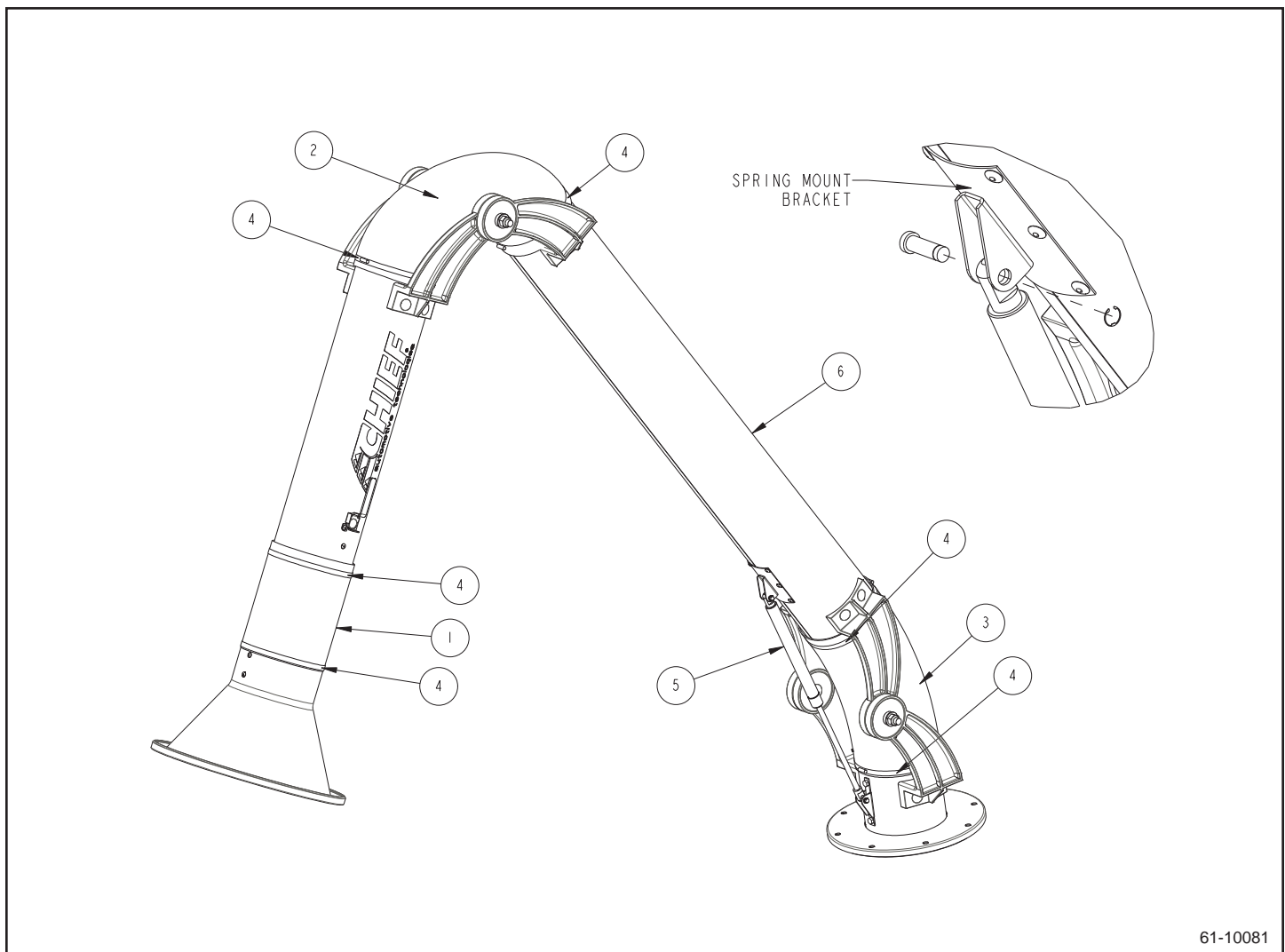


61-10085

FIGURE 7
Fume Extractor Replacement Parts Detail

9.2 EXTRACTION ARM REPLACEMENT PARTS

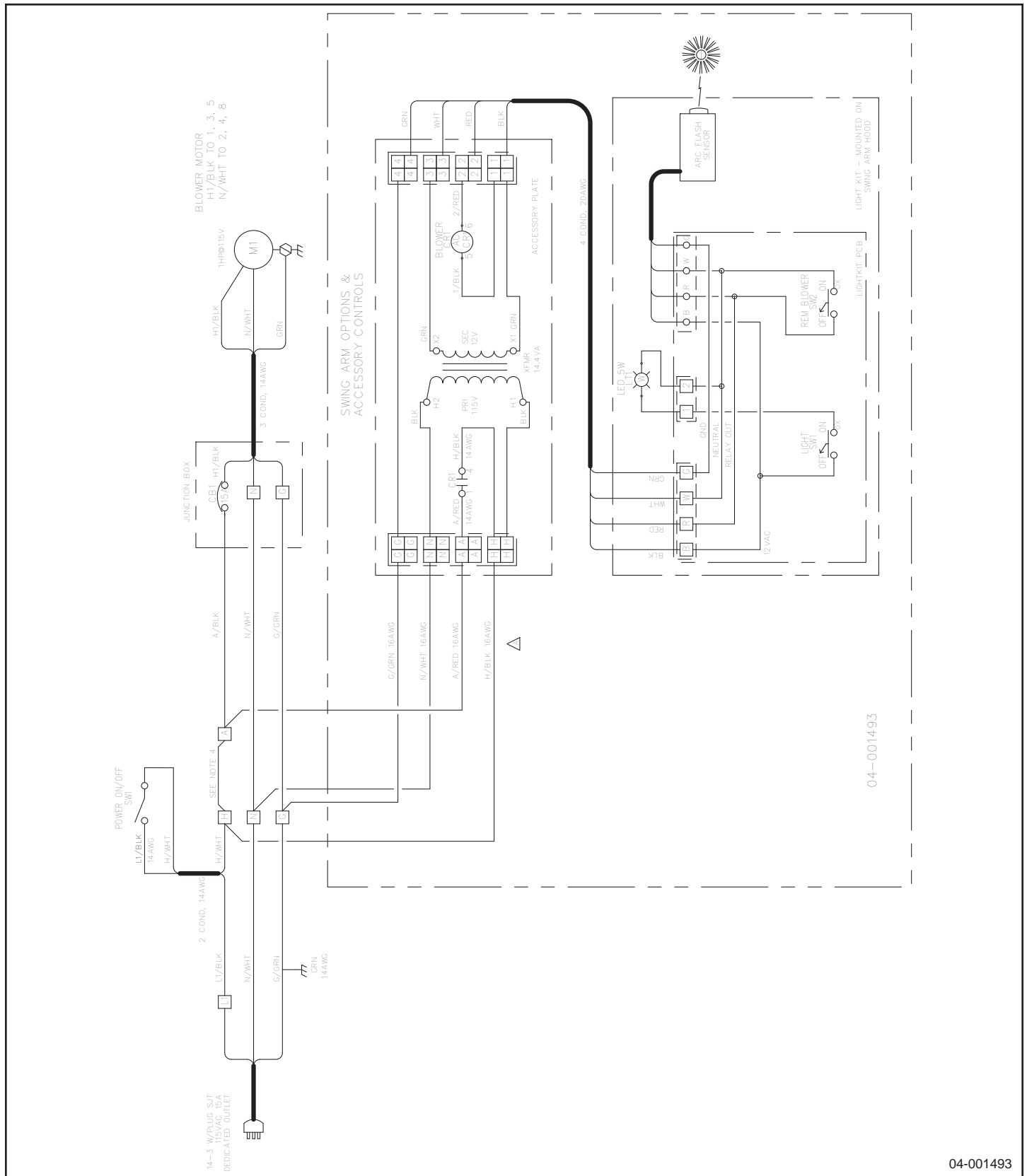
Item Number	Part Number	Description
1	CHF1402	Hood Joint Flex Duct
2	CHF1403	Middle Joint Flex Duct
3	CHF1404	Base Joint Flex Duct
4	CHF1412	6" Hose Clamps
5	CHF1413	Gas Shock (7' Arm)
	CHF1414	Gas Shock (10' Arm)
6	CHF1410	7 FT Extraction Arm Complete Assembly
	CHF1411	10 Ft Extraction Arm Complete Assembly



61-10081

FIGURE 8
Extraction Arm Replacement Parts

10.0 WIRING DIAGRAM



04-001493

This page intentionally left blank

This page intentionally left blank

CHIEF'S LIMITED ONE-YEAR WARRANTY & LIABILITY

Chief Automotive Technologies warrants for one year from date of installation and/or purchase any components of its Fume Extractor which do not perform satisfactorily due to defect caused by faulty material or workmanship. Chief's obligation under this warranty is limited to the repair or replacement of products which are defective and which have not been misused, carelessly handled, or defaced by repair or repairs made or attempted by others.

CHIEF AUTOMOTIVE TECHNOLOGIES DOES NOT ASSUME RESPONSIBILITY FOR ANY DEATH, INJURY OR PROPERTY DAMAGE RESULTING FROM THE OPERATOR'S NEGLIGENCE OR MISUSE OF THIS PRODUCT OR ITS ATTACHMENTS.

CHIEF MAKES NO WRITTEN, EXPRESS OR IMPLIED WARRANTY WHATSOEVER OF MERCHANTABILITY OR FITNESS FOR A PARTICULAR PURPOSE OR OTHERWISE REGARDING THE EQUIPMENT OR ANY PART OF THE PRODUCT OTHER THAN THE LIMITED ONE-YEAR WARRANTY STATED ABOVE.

Chief reserves the right to alter product specifications and/or package components without notice.



966 Industrial Dr. Madison, IN 47250
Phone: 800.445.9262
Fax: 866.275.0173
www.chiefautomotive.com